



LARGE SYNOPTIC SURVEY TELESCOPE

Large Synoptic Survey Telescope (LSST) Data Management System Design

K.-T. Lim, J. Bosch, G. Dubois-Felsmann, T. Jenness, J. Kantor,
W. O'Mullane, D. Petravick, and the DM Leadership Team

LDM-148

Latest Revision: 2018-06-18

Draft Revision NOT YET Approved - This LSST document has been approved as a Content-Controlled Document by the LSST DM Change Control Board. If this document is changed or superseded, the new document will retain the Handle designation shown above. The control is on the most recent digital document with this Handle in the LSST digital archive and not printed versions. Additional information may be found in the corresponding DM RFC. - **Draft Revision NOT YET Approved**

Abstract

The LSST Data Management System (DMS) is a set of services employing a variety of software components running on computational and networking infrastructure that combine to deliver science data products to the observatory's users and support observatory operations. This document describes the components, their service instances, and their deployment environments as well as the interfaces among them, the rest of the LSST system, and the outside world.

Draft

Change Record

Version	Date	Description	Owner name
2	2011-08-09	Copied from MREFC Proposal into LDM-148 handle, reformatted	Robert McKercher
3	2011-08-15	Updated for Preliminary Design Review	Tim Axelrod, K-T Lim, Mike Freemon, Jeffrey Kantor
4	2013-10-09	Updated for Final Design Review	Mario Juric, K-T Lim, Jeffrey Kantor
5.0	2017-07-04	Rewritten for Construction and Operations. Approved in RFC-358.	K-T Lim

Document curator: Kian-Tat Lim

Document source location: <https://github.com/lstt/LDM-148>

Contents

1	Introduction	1
2	Summary Concept of Operations	2
3	Sizing	4
4	Component Overview	8
5	Prompt Base Enclave	15
5.1	Service Descriptions	16
5.1.1	Archiving	16
5.1.2	Planned Observation Publication	17
5.1.3	Prompt Processing Ingest	17
5.1.4	Observatory Operations Data	17
5.1.5	OCS Driven Batch	18
5.1.6	Telemetry Gateway	18
5.2	Interfaces	18
6	Prompt NCSA Enclave	19
6.1	Service Descriptions	20
6.1.1	Prompt Processing	20
6.1.2	Alert Distribution	21
6.1.3	Prompt Quality Control	21
6.2	Interfaces	21
7	Offline Production Enclave	22
7.1	Service Descriptions	22
7.1.1	Batch Production	22
7.1.2	Offline Quality Control	24
7.2	Interfaces	24



8	Data Access Centers	25
8.1	Service Descriptions	25
8.1.1	LSST Science Platform DAC instances	25
8.1.2	Bulk Distribution	26
8.2	Interfaces	26
9	Commissioning Cluster	27
9.1	Service Description	27
9.1.1	LSST Science Platform Commissioning instance	27
9.2	Interfaces	27
10	Backbone Services	28
10.1	Service Descriptions	28
10.1.1	DBB Ingest/Metadata Management	29
10.1.2	DBB Lifetime Management	29
10.1.3	DBB Transport/Replication/Backup	29
10.1.4	DBB Storage	29
10.2	Interfaces	29
11	Software Components	30
11.1	Science Payloads	30
11.1.1	Alert Production Payload	30
11.1.2	MOPS Payload	30
11.1.3	Raw Calibration Validation Payload	30
11.1.4	Daily Calibration Products Update Payload	31
11.1.5	Periodic Calibration Products Production Payload	31
11.1.6	Special Programs Productions Payload	31
11.1.7	Template Generation Payload	31
11.1.8	Annual Calibration Products Production Payload	31
11.1.9	Data Release Production Payload	32
11.2	Firefly and SUIT	32

11.3	Middleware	32
11.3.1	Data Butler Access Client	32
11.3.2	Parallel Distributed Database (Qserv)	32
11.3.3	Task Framework	33
11.3.4	ADQL Translator	33
11.3.5	Image Server	34
12	Infrastructure Services	34
12.1	Service Descriptions	34
12.1.1	Managed Database	34
12.1.2	Batch Processing	34
12.1.3	Containerized Application Management	35
12.1.4	IT Security	35
12.1.5	Identity Management	36
12.1.6	ITC Provisioning and Management	36
12.1.7	Service Management/Monitoring	36
12.2	Interfaces	36
13	NCSA Development and Integration Enclave	37
13.1	Service Descriptions	37
13.1.1	LSST Science Platform Science Validation instance	37
13.1.2	Developer Services	37
13.2	Interfaces	38
14	Design and Implementation Standards	38
14.1	Python Version	38
14.2	HTTPS Protocol	38
15	Appendix: Traceability	40
15.1	Requirement to Component Traceability	40
15.2	Component to Requirement Traceability	58

16 References

94

Draft

Data Management System Design

1 Introduction

The purpose of the LSST Data Management System (DMS) is to deliver science data products to the observatory's users and to support observatory operations. The DMS is a set of services employing a variety of software components running on computational and networking infrastructure. The DMS is constructed by the DM subsystem in the NSF MREFC project; in the Operations era, it is operated by a combination of the LSST Data Facility, Science Operations, and Observatory Operations departments.

The data products to be delivered are defined and described in the *Data Products Definition Document* [LSE-163]. These are divided into three major categories.

One category of data products is generated on a nightly or daily cadence and comprises raw, processed/calibrated, and difference images as well as alerts of transient, moving, and variable objects detected from the images, published within 60 seconds, and recorded in searchable catalogs. These data products can be considered "online", as they are driven primarily by the observing cadence of the observatory. This category of Prompt data products has historically been referred to as "Level 1". These products are intended to enable detection and follow-up of time-sensitive time-domain events.

A second category of data products is generated on an annual cadence and represents a complete reprocessing of the set of images taken to date to generate astronomical catalogs containing measurements and characterization of tens of billions of stars and galaxies with high and uniform astrometric and photometric accuracy. As part of this reprocessing, all of the first category of data products is regenerated, often using more accurate algorithms. This category also includes other data products such as calibration products and templates that are generated in an "offline" mode, not directly tied to the observing cadence. This category of Data Release data products has historically been referred to as "Level 2", including the regenerated data products from the first category.

The third category of data products is not generated by the LSST DMS but is instead generated, created, or imported by science users for their own science goals. These products derive value from their close association with or derivation from other LSST data products.

The DMS is responsible for providing facilities, services, and software for their generation and storage. This category of User Generated data products has historically been referred to as “Level 3”.

Data products are delivered to science users through Data Access Centers (DACs). In addition, streams of near-realtime alerts and planned observations are provided. Each LSST data product has associated metadata providing provenance and quality metrics and tracing it to relevant calibration information in the archive. The DACs are composed of modest but significant computational, storage, networking, and other resources intended for use as a flexible, multi-tenant environment for professional astronomers with LSST data rights to retrieve, manipulate, and annotate LSST data products in order to perform scientific discovery and inquiry.

The first section of this document describes how the DMS components work together to generate and distribute the data products. The next section describes how the size of the DMS computing environments was estimated. Subsequent sections describe the individual components of the DMS in more detail, including their interfaces with each other, with other LSST subsystems, and with the outside world.

2 Summary Concept of Operations

The principal functions of the DMS are to:

- Process the incoming stream of images generated by the camera system during observing by archiving raw images, generating transient alerts, and updating difference source and object catalogs.
- Periodically (at least annually) process the accumulated survey data to provide a uniform photometric and astrometric calibration, measure the properties of fainter objects, and characterize the time-dependent behavior of objects. The results of such a processing run form a data release (DR), which is a static, self-consistent data set for use in performing scientific analysis of LSST data and publication of the results. All data releases are archived for the entire operational life of the LSST archive.
- Periodically create new calibration data products, such as bias frames and flat fields, to be used by the other processing functions.

- Make all LSST data available through an interface that utilizes, to the maximum practical extent, community-based standards such as those being developed by the Virtual Observatory (VO) in collaboration with the International Virtual Observatory Alliance (IVOA). Provide enough processing, storage, and network bandwidth to enable user analysis of the data without petabyte-scale data transfers.

The latency requirements for alerts determine several aspects of the DMS design and overall cost. An alert is triggered by an unexpected excursion in brightness of a known object or the appearance of a previously undetected object such as a supernova or a GRB. The astrophysical time scale of some of these events may warrant follow-up by other telescopes on short time scales. These excursions in brightness must be recognized by the pipeline, and the resulting alert data product sent on its way, within 60 seconds. This drives the DMS design in the decision to acquire high-bandwidth/high-reliability long-haul networking from the Summit at Cerro Pachon to the Base in La Serena and from Chile to the U.S. These networks allow the significant computational resources necessary for promptly processing incoming images to be located in cost-effective locations: the Base has far fewer limitations on power, cooling, and rack space capacity than the Summit, and placing the scientific processing at NCSA allows for far greater flexibility in the allocation of resources to ensure that deadlines are met. Performing cross-talk correction on the data in the data acquisition system and parallelizing the alert processing at the amplifier and CCD levels, where possible, also help to minimize the latency to alert delivery.

The Data Release processing requires extensive computation, combining information from all images of an object in order to measure it as accurately as possible. A sophisticated workload and workflow management system and Task Framework are used to divide the processing into manageable units of work that can be assigned to available resources, including the two dedicated processing clusters at NCSA and CC-IN2P3.

Calibration data products must be created and updated at cadences in between the Alert and Data Release periods. The stability of the system is expected to require daily, monthly, and annual calibration productions. The daily production must be synchronized with the observatory schedule, occurring after raw calibration frames have been taken but well before science observing is planned. This requirement necessitates the inclusion of a service that allows the Observatory Control System to trigger remote calibration processing at NCSA.

The DACs are a key component of the DMS, giving the community resources and an interface to interact with and utilize the LSST data products to perform science. An instance of the LSST Science Platform (LSP) is deployed in each DAC to support science users with its Portal, JupyterLab (notebook), and Web API aspects. Substantial compute, storage, and storage bandwidth is devoted to ensuring that the LSP is responsive and allows for exploration of the vast LSST data products.

Underlying all of the above is a Data Backbone that provides storage, tracking, and replication for all LSST data products. The Data Backbone links all of the enclaves including the Data Access Centers, acting as the spine that supports them all.

3 Sizing

A fundamental question is how large the LSST Data Management System must be. To this end, a complex analytical model has been developed driven by input from the requirements specifications. Specifications from the science requirements and other subsystem designs, and the observing strategy, translate directly into numbers of detected sources and astronomical objects, and ultimately into required network bandwidths and the size of storage systems. Specific science requirements of the survey determine the data quality that must be maintained in the DMS products, which in turn determine the algorithmic requirements and the computer power necessary to execute them. The relationship of the elements of this model and their flow-down from systems and DMS requirements is shown in Figure 1. Detailed sizing computations and associated explanations appear in LSST Documents listed on the Figure.

Key input parameters include camera characteristics, the expected cadence of observations, the number of observed stars and galaxies expected per band, the processing operations per data element, the data transfer rates between and within processing locations, the ingest and query rates of input and output data, the alert generation rates, and latency and throughput requirements for all data products.

Processing requirements were extrapolated from the functional model of operations, prototype pipelines and algorithms, and existing precursor pipelines adjusted to LSST scale. As a part of every Data Release, all data previously processed are reprocessed with the latest algorithms, calibration products, and parameters. This causes the processing requirements to

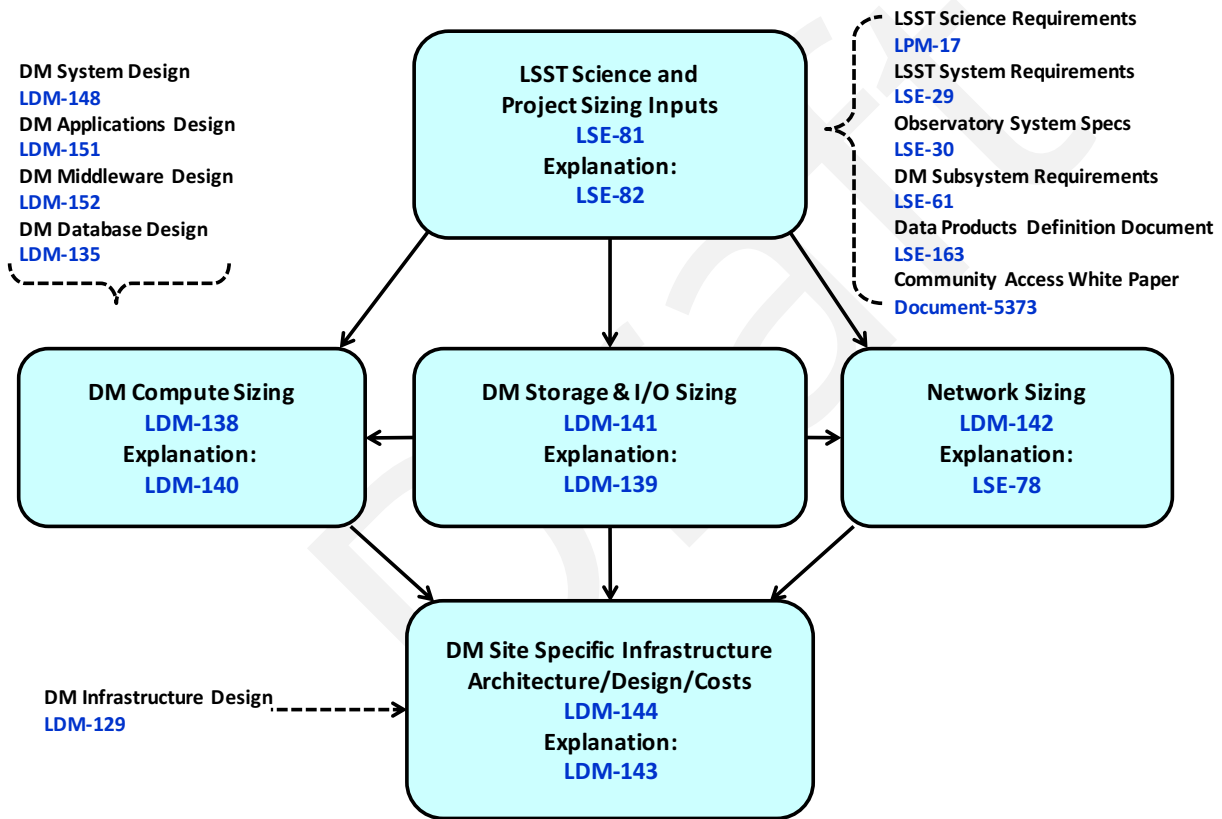


FIGURE 1: DMS Infrastructure Sizing and Estimation.

TABLE 1: DMS Compute Infrastructure Sizing; growth from Survey Year 1 to Year 10; hwm = high-water mark

		<i>Archive Site</i>	<i>Base Site</i>
Compute	TeraFLOPS (sustained)	197 → 970	30 → 62
	Nodes	436 → 305 (455 hwm)	56 → 17 (59 hwm)
	Cores	18K → 62K	3K → 4K
Database	TeraFLOPS (sustained)	40 → 310	55 → 306
	Nodes	94 → 113 (148 hwm)	108 → 98 (133 hwm)
Facilities	Floor Space	826 → 744 ft ² (834 hwm)	278 → 195 ft ² (435 hwm)
	Power	274 → 273 kW (309 hwm)	158 → 248 kW (248 hwm)
	Cooling	0.9 → 0.9 mmbtu (1.1 hwm)	0.5 → 0.8 mmbtu (0.8 hwm)

TABLE 2: DMS Storage Infrastructure Sizing; growth from Survey Year 1 to Year 10

		<i>Archive Site</i>	<i>Base Site</i>
File Storage	Capacity	24 → 81 PB	
	Drives	1602 → 862	597 → 249
	Bandwidth	493 → 714 GB/s (752 hwm)	223 → 231 GB/s (236 hwm)
Database	Capacity	29 → 99 PB	16 → 72 PB
	Drives	3921 → 2288	2190 → 1642
	Bandwidth	1484 → 2040 GB/s (2163 hwm)	829 → 1169 GB/s (1615 hwm)
Tape Storage	Capacity	31 → 242 PB	
	Tapes	2413 → 3691 (4117 hwm)	
	Tape Bandwidth	36 → 65 GB/s	

increase with time. Advances in hardware performance, however, are expected to reduce the number of nodes needed and the power and cooling devoted to them. This causes some of the performance figures in Table 1 to reach a high-water mark during the survey.

Storage and input/output requirements were extrapolated from the data model of LSST data products, the DMS and precursor database schemas, and existing database management system overhead factors in precursor surveys and experiments adjusted to LSST scale. A summary of key numbers is in Table 2.

Communications requirements were developed and modeled for the data transfers and user query/response load, extrapolated from existing surveys and adjusted to LSST scale. These requirements are illustrated in Figure 2 for per-visit transfers. Peak bandwidths assume a 3 second budget for Summit to Base image transfer and a 5 second budget for international image transfer.

The Summit to Base and Base to NCSA network links have been significantly over-engineered

for four main reasons: first, because the incremental costs of higher bandwidth once the link has been provisioned at all have been small; second, to allow key functions, such as interfacing with the Camera Data System or performing image analysis and measurement to generate alerts, to be performed in appropriate locations; third, to increase reliability of the system; and fourth, to simplify certain components such as the Forwarders and Archivers that interface with or depend on the networks. A high-speed Base to NCSA link also enables Data Releases to be transferred south to the Chilean DAC over the network rather than through physical media, as originally planned, decoupling science from maintenance and upgrade activities to a greater extent.

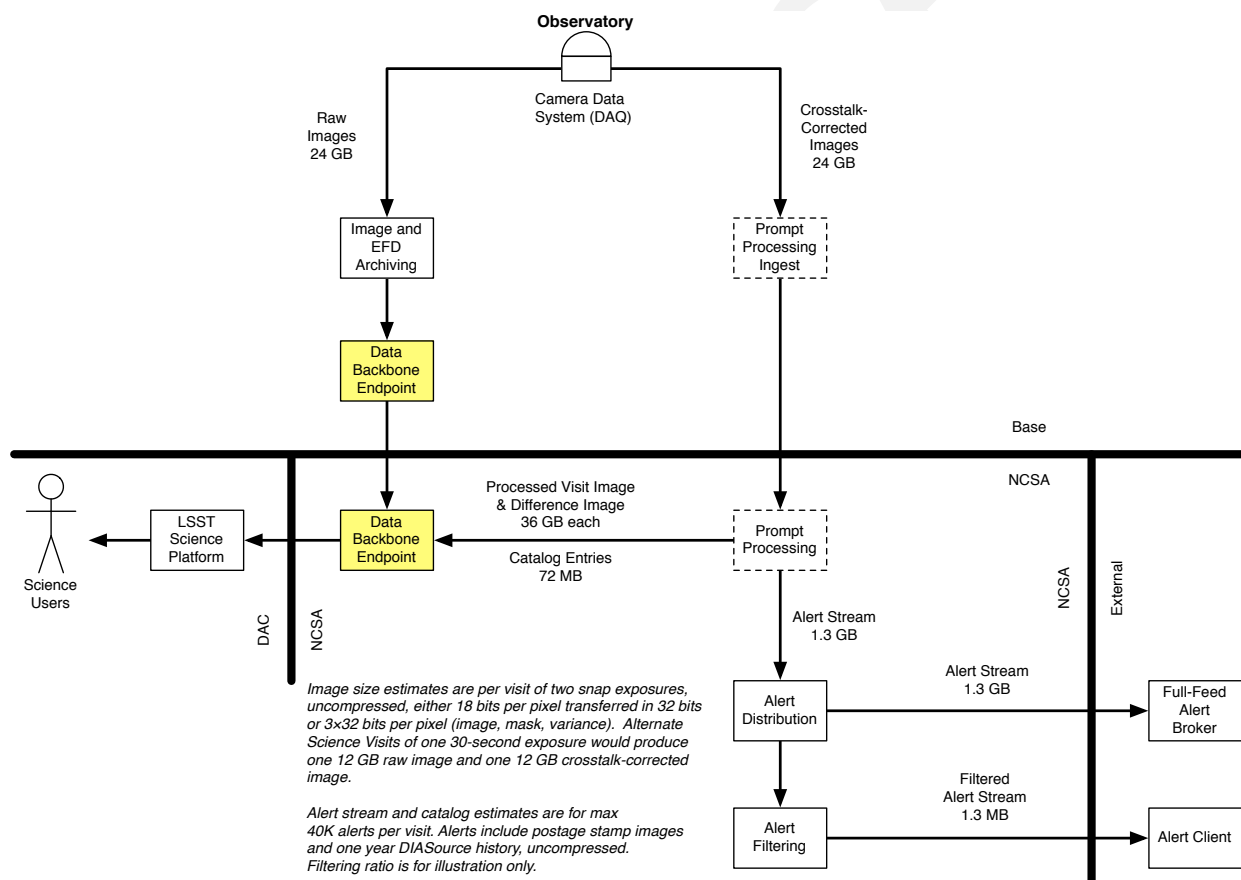


FIGURE 2: Near Real-Time Data Flows

In all of the above, industry-provided technology trends (LDM-143) were used to extrapolate to the LSST construction and operations phases in which the technology will be acquired, configured, deployed, operated, and maintained. A just-in-time acquisition strategy is employed to leverage favorable cost/performance trends.

The resulting performance and sizing requirements show the DMS to be a supercomputing-class system with correspondingly large data input/output and network bandwidth rates. Despite this size, technology trends show this to be well within the anticipated performance of commodity-based systems during the construction and operations time frame.

4 Component Overview

The services that make up the DMS are in turn made up of software and underlying service components, instantiated in a particular configuration in a particular computing environment to perform a particular function. Some software components are specific to a service; others are general-purpose and reused across multiple services. Many services have only one instance in the production system; others have several, and all have additional instances in the development and integration environments for testing purposes.

The DMS services can be considered to consist of four tiers of software components. The top tier is the LSST Science Platform, which is deployed in the DACs and other enclaves to provide a user interface and analysis environment for science users and LSST staff. The detailed design of this tier is given in *LSST Science Platform* [LDM-542]. The next tier is composed of science “applications” software that generates data products. This software is used to build “payloads”, sequences of pipelines, that perform particular data analysis and product generation tasks. It is also used by science users and staff to analyze the data products. The detailed design of the components in this tier is given in *Data Management Science Pipelines Design* [LDM-151]. A lower tier is “middleware” software components and services that execute the science application payloads and isolate them from their environment, including changes to underlying technologies. These components also provide data access for science users and staff. The detailed design of the components in this tier is given in *Data Management Middleware Design* [LDM-152]. The bottom tier is “infrastructure”: hardware, networking, and low-level software and services that provide a computing environment. The detailed design of components in this tier is given in *LSST Data Facility Logical Information Technology and Communications Design* [LDM-129] and *Network Design* [LSE-78].

The DMS computing environments reside in four main physical locations: the Summit Site including the main Observatory and Auxiliary Telescope buildings on Cerro Pachon, Chile; the Base Facility data center located at the Base Site in La Serena, Chile; the NCSA Facility data center at the National Center for Supercomputing Applications (NCSA) in Urbana, Illinois, USA;

and the Satellite Facility at CC-IN2P3 in Lyon, France. These are linked by high-speed networks to allow rapid data movement.

The Base Facility includes four enclaves: the Base portion of the Prompt Enclave directly supporting Observatory operations, the Commissioning Cluster, an Archive Enclave holding data products, and the Chilean Data Access Center.

The NCSA Facility also includes four enclaves: the NCSA portion of the Prompt Enclave, the Offline Production Enclave hosting all offline "data release" and calibration activities, another Archive Enclave, and the US Data Access Center.

Additionally, a separate Development and Integration Enclave at NCSA hosts many of the services and tools necessary to build and test the DMS.

These enclaves are distinguished by having different users, operations timescales, interfaces, and often components.

DMS services are assigned to each of these enclaves. Some enclave hardware may be dedicated; the remainder is allocated from Master Provisioning hardware pools at each Facility. Each service is generally implemented by a corresponding software product. In some cases, such as for the Archiving and Telemetry Gateway, multiple services are supported by a single software product. In other cases, such as for the Image Ingest and EFD Transformation portions of the Archiving service, multiple software products support a single overall service.

The service instances that make up the DMS include (with the enclave they are in noted):

- Archiving (Prompt Base)
- Planned Observation Publication (Prompt Base)
- Prompt Processing Ingest (Prompt Base)
- Observatory Operations Data (Prompt Base)
- Observatory Control System (OCS) Driven Batch (Prompt Base)
- Telemetry Gateway (Prompt Base)
- Prompt Processing (Prompt NCSA)

- Alert Distribution (Prompt NCSA)
- Prompt Quality Control (QC) (Prompt NCSA)
- Batch Production (Offline Production, Satellite Facility)
- Data Release QC (Offline Production)
- LSST Science Platform Commissioning Cluster instance (Commissioning Cluster)
- LSST Science Platform Data Access Center instances (DACs)
- Bulk Distribution (DAC)
- Data Backbone (Archive Base and NCSA)

The relationships between these services, their deployment enclaves physical facilities, and science application “payloads” can be visualized in Figure 3.

Other services necessary to build, test, and operate the DMS but that are not directly responsible for generating data products include:

- LSST Science Platform Science Validation instance (Development and Integration)
- Developer Services (Development and Integration)
- Managed Database (Infrastructure)
- Batch Computing (Infrastructure)
- Containerized Application Management (Infrastructure)
- IT Security (Infrastructure)
- Identity Management (Infrastructure)
- ITC Provisioning and Management (Infrastructure)
- Service Management/Monitoring (Infrastructure)

The common infrastructure services are illustrated in Figure 4.

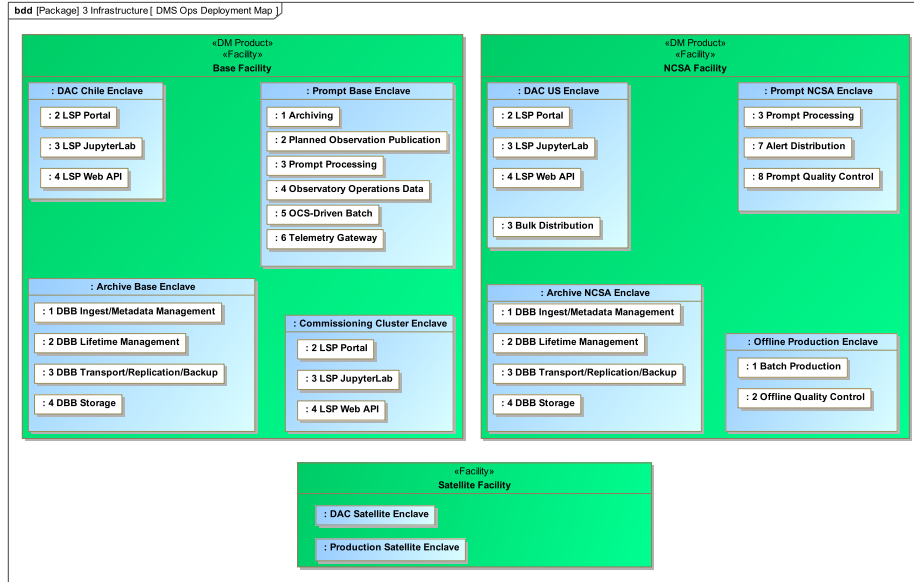


FIGURE 3: Data Management System Deployment

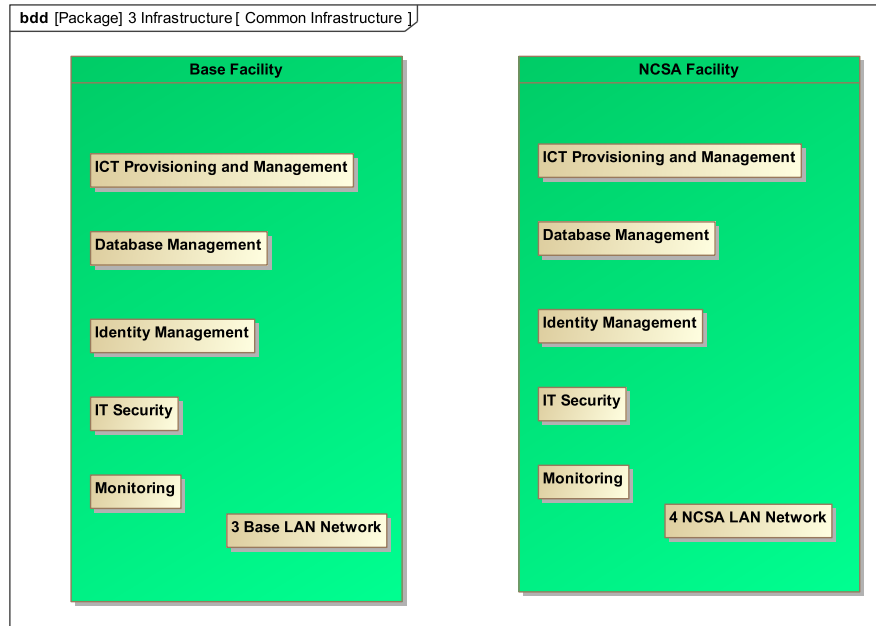


FIGURE 4: Data Management System Common Infrastructure Services

The science application software for the Alert Production, daytime processing, Data Release Production, and calibration processing is built out of a set of libraries and frameworks that accept plugins. In turn, those frameworks build on middleware that provides portability and scalability. The relationships between the packages implementing these frameworks and plugins and the underlying middleware packages are shown in Figure 5.

The Science Pipelines Software product category contains the production pipelines that generate data products. Those rely on the Science Pipelines Libraries supporting software product, which includes these key components:

- Low-level astronomical software primitives and data structures (afw)
- Image processing and measurement framework with core algorithms (ip_*, meas_*)
- Additional image processing and measurement algorithms (meas_extensions_*)
- High-level algorithms and driver scripts that define pipelines (pipe_tasks, pipe_drivers)
- Camera-specific customizations (obs_*)

The middleware layer includes certain supporting software products and the Batch Production software products:

- Data access client (Data Butler) (daf_persistence)
- Parallel distributed database (qserv)
- Task framework (pex_*, log, pipe_base, ctrl_pool)
- Campaign management and workflow for production control (ctrl_*)

Infrastructure components include:

- Other databases (typically relational)
- Common off-the-shelf software and other third-party products
- Low-level software such as operating systems

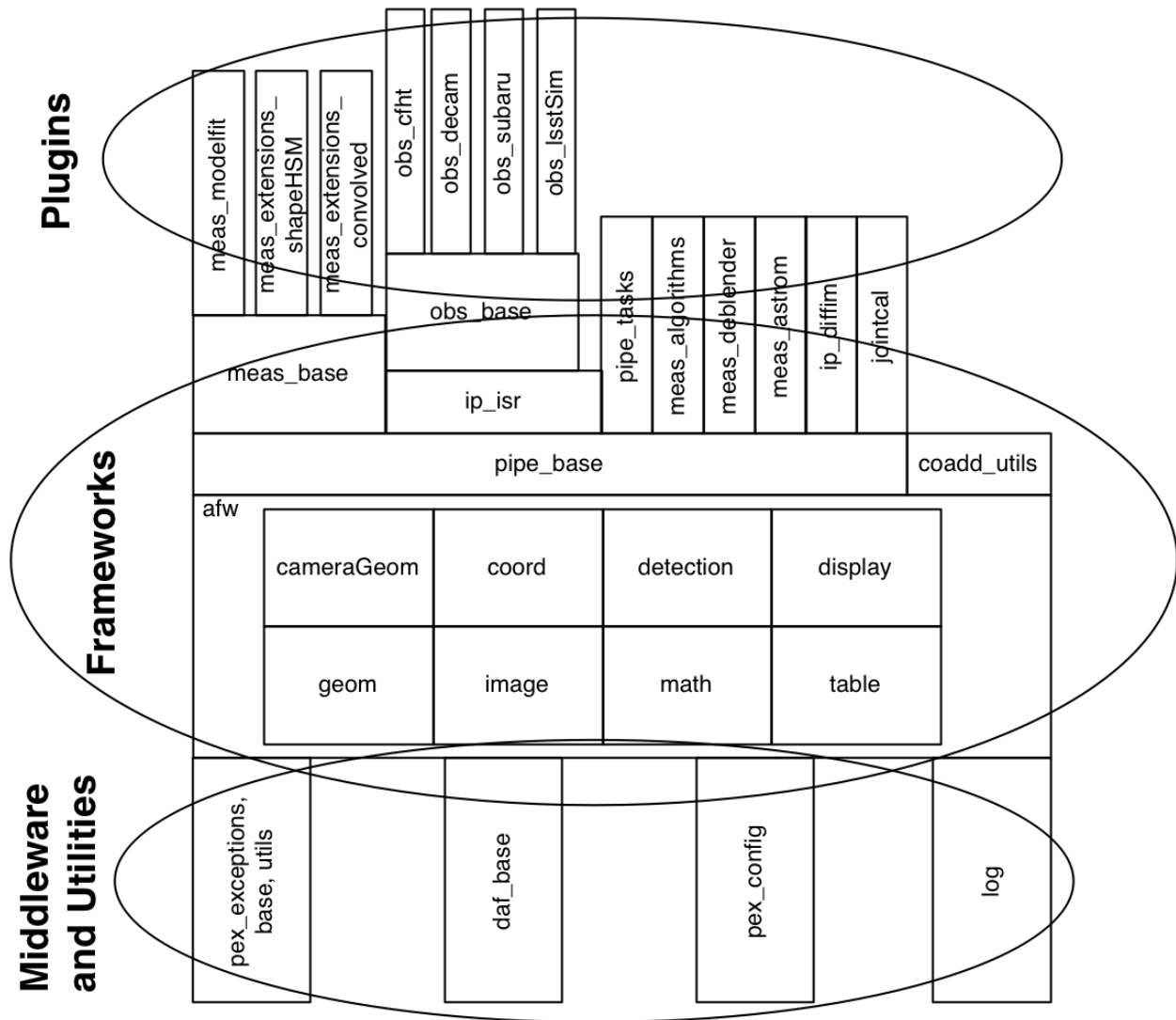


FIGURE 5: Data Management Science Pipelines Software “Stack”

- Filesystems
- Authentication and authorization (identity management)
- Provisioning and resource management
- Monitoring
- Hardware (compute, storage, and network) configurations

The relationships between the middleware and infrastructure components are illustrated in Figure 6.

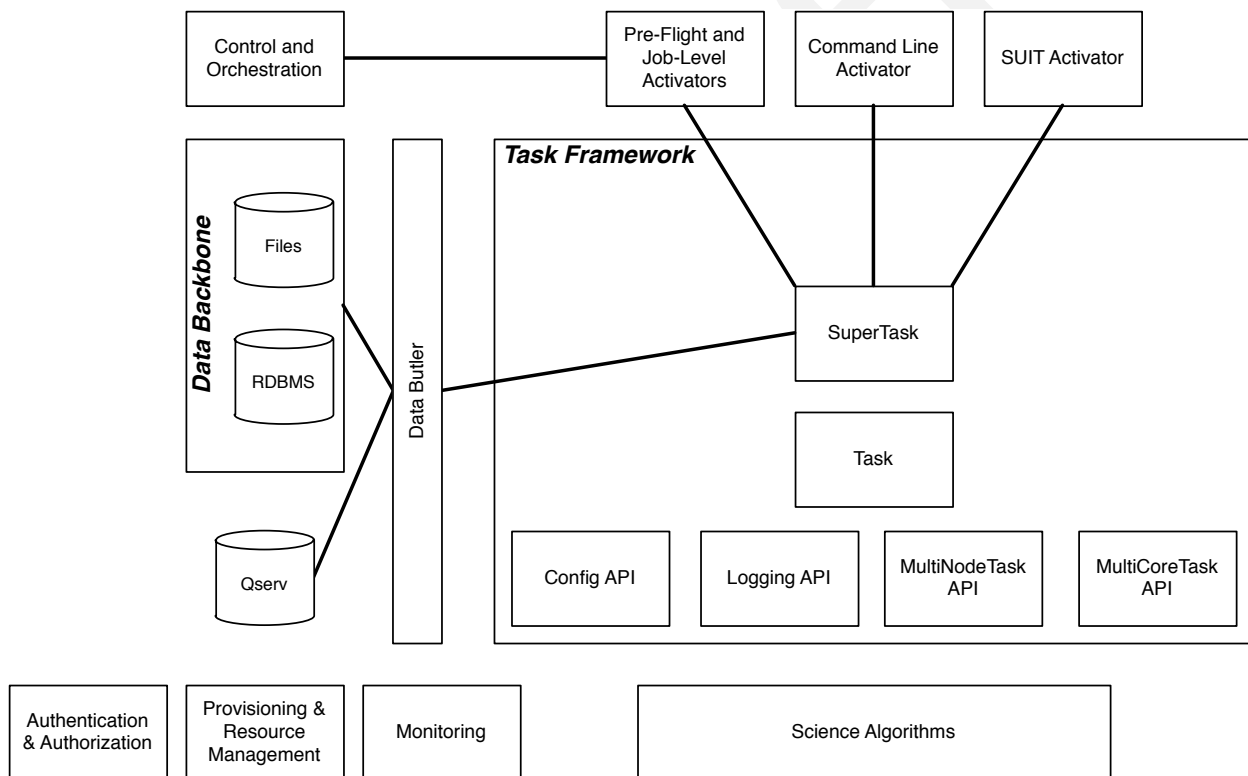


FIGURE 6: Data Management Middleware and Infrastructure

5 Prompt Base Enclave

Services located in this enclave are located at the Base solely because they must interact with the OCS or the Camera Data System (also known as the Camera DAQ) or both. In several cases, services located here interact closely with corresponding services in the Prompt NCSA

Enclave, to the point where the Base service cannot function if the NCSA service is not operational. This reliance has been taken into account in the fault tolerance strategies used.

The primary goals of the services in this enclave are to transfer data to appropriate locations, either to NCSA, from NCSA, or to the Data Backbone.

The services in this enclave and their partners in the Prompt NCSA Enclave need to run rapidly and reliably. They run at times (outside office hours) and with latencies that are not amenable to a human-in-the-loop design. Instead, they are designed to execute autonomously, often under the control of the OCS, with human oversight, monitoring, and control only at the highest level.

5.1 Service Descriptions

Detailed concepts of operations for each service can be found in *Concept of Operations for the LSST Production Services* [LDM-230].

5.1.1 Archiving

This component is composed of several Image Archiver service and Catch-Up Image Archiver instances: one pair each for the LSSTCam, the ComCam, and the Auxiliary Telescope Spectrograph, all of which may be operated simultaneously. These capture raw images taken by each camera, including the wavefront sensors and the guide sensors of the LSSTCam or ComCam when so configured, retrieving them from their respective Camera Data System instances.

A Header Generator written by Data Management but operated by the Observatory captures specific sets of metadata associated with the images, including telemetry values and event timings, from the OCS publish/subscribe middleware and/or from the EFD. It formats these into a metadata package that is recorded in the EFD Large File Annex. The Archiver and Catch-Up Archiver instances retrieve this metadata package and attach it to the captured image pixels.

The image pixels and metadata are passed to the Observatory Operations Data Service (OODS), which serves as a buffer from which observing-critical data can be retrieved. They are also passed to a staging area for ingestion into the permanent archive in the Data Backbone. The

catch-up versions archive into the OODS and Data Backbone any raw images and metadata that were missed by the primary archiving services due to network or other outage, retrieving them from the flash storage in the Camera Data System instances and the EFD.

This component also includes an EFD Transformation service that extracts all information (including telemetry, events, configurations, and commands) from the EFD and its large file annex, transforms it into a form more suitable for querying by image timestamp, and loads it into the permanently archived “Transformed EFD” database in the Data Backbone.

5.1.2 Planned Observation Publication

This service receives telemetry from the OCS describing the next visit location and the telescope scheduler’s predictions of its future observations. It publishes these as an unauthenticated, globally-accessible web service comprising both a web page for human inspection and a web API for usage by automated tools.

5.1.3 Prompt Processing Ingest

This component is composed of two instances that capture crosstalk-corrected images from the LSSTCam and ComCam Camera Data Systems along with selected metadata from the OCS and/or EFD and transfer them to the Prompt Processing service in the NCSA Level 1 Domain.

There is no Prompt Processing Ingest instance for the auxiliary telescope spectrograph.

5.1.4 Observatory Operations Data

This service provides low-latency access to images, other files, and metadata for use by Observatory systems and the Commissioning Cluster LSP instance. It maintains a higher level of service availability than the Data Backbone. After images, files, and metadata are ingested, they remain available through the OODS for a policy-configured amount of time. Files stored in the OODS include raw images from the Camera as well as master calibration images from the Calibration Products Production payloads, intended for use by the Active Optics and Guider components of the Telescope and Site subsystem.

5.1.5 OCS Driven Batch

This service receives commands from the OCS and invokes a Batch Computing service to execute configured science payloads. The service can be configured to execute on the Commissioning Cluster at the Base or in the Offline Production Enclave at NCSA. It is used for modest-latency analysis of images during Commissioning and for processing daily calibration images in normal observing operations. Images and metadata are taken from the Data Backbone, and results are provided back to the Data Backbone; there is no direct connection from this service to the Camera Data System. This obviously bounds the minimum latency from image acquisition to processing start by the latency of the Archiving service and Data Backbone transfer. A summary status for the processing performed is sent to the OCS Driven Batch Control service to be returned to the OCS.

5.1.6 Telemetry Gateway

This service obtains information from the Prompt NCSA Enclave, particularly status and quality metrics from Prompt Processing of images and the Prompt Quality Control service, and transmits it to the OCS as specified in the *Data Management-OCS Software Communication Interface* [LSE-72]. Note that more detailed information on the status and performance of DMS services will also be available to Observatory operators through remote displays originated from the Service Management/Monitoring infrastructure services in all DMS enclaves.

5.2 Interfaces

OCS to all Prompt Base Enclave services: these interface through the SAL library provided by the OCS subsystem.

Archiver and Catch-Up Archiver to Observatory Operations Data Service: image files with associated metadata are written to OODS storage.

Archiver and Catch-Up Archiver to Data Backbone: files are copied to Data Backbone storage via a file transfer mechanism, and their information and metadata are registered with Data Backbone management dataabases. The Data Butler is not used for this low-level, non-science-payload interface.

Observatory Operations Data Service to Data Backbone: files are copied from the Data Backbone to the OODS after completion and validation of calibration production results.

Observatory Operations Data Service to Commissioning Cluster LSP and other users: the OODS provides a mountable POSIX filesystem interface. A web interface (e.g. WebDAV) may also be provided, but this will be as simple as possible to enable maintaining a very high level of service availability and reliability.

EFD to EFD Transformer: this interface is via connection to the databases that make up the EFD as well as file transfer from the EFD's Large File Annex.

EFD Transformer to Data Backbone: Transformed EFD entries are inserted into the "Transformed EFD" database resident within the Data Backbone.

Camera Data System to Archiver, Catch-Up Archiver, Prompt Processing Ingest: these interface through the custom library provided by the Camera Data System.

Prompt Processing Ingest to Prompt Processing: BBFTP is used to transfer files over the international network from the ingest service to the processing service.

OCS Driven Batch to Batch Computing: HTCondor is used to transfer execution instructions from the control service to the batch service, whether to the Commissioning Cluster or over the international network to the Offline Production Enclave, and return status and result information.

Telemetry Gateway from Prompt NCSA Enclave services: RabbitMQ is used to transfer status and quality metrics to the gateway over the international network.

6 Prompt NCSA Enclave

This enclave is responsible for the compute-intensive processing for all near-realtime operations and other operations closely tied with the Observatory. Its primary goals are to process images and metadata from the Observatory into "online" science data products and publish them to the DACs, alert subscribers, and back to the OCS.

The Prompt Processing service executes science payloads that are tightly integrated with the observing cadence and is intended to function in near-realtime with strict result deadlines for both science and raw calibration images.

Note that offline (typically daytime) processing to generate Prompt data products occurs under the control of the Batch Production service in the Offline Production Enclave using its Batch Computing resources.

The Alert Distribution service receives batches of alerts resulting from Prompt Processing of each science visit; it then provides bulk alert streams to community alert brokers and filtered alert streams to LSST data rights holders.

The Prompt Quality Control service monitors the “online” science data products, including alerts, notifying operators if any anomalies are found.

Like the services in the Base Center, these services need to run rapidly and reliably and so are designed to execute autonomously.

6.1 Service Descriptions

Detailed concepts of operations for each service can be found in *Concept of Operations for the LSST Production Services* [LDM-230].

6.1.1 Prompt Processing

This service receives crosstalk-corrected images and metadata from the Prompt Processing Ingest service at the Base and executes the Alert Production science payload on them, generating “online” data products that are stored in the Data Backbone. The Alert Production payload then sends alerts to the Alert Distribution service.

The Prompt Processing service has calibration (including Collimated Beam Projector images), science, and deep drilling modes. In calibration mode, it executes a Raw Calibration Validation payload that provides rapid feedback of raw calibration image quality. In normal science mode, two consecutive exposures are grouped and processed as a single visit. Definitions of exposure groupings to be processed as visits in deep drilling and other modes are TBD.

The service is required to deliver Alerts within 60 seconds of the final camera readout of a standard science visit with 98% reliability.

There is no Prompt Processing service instance for the Auxiliary Telescope Spectrograph.

6.1.2 Alert Distribution

This service obtains alerts generated by the Alert Production science payload and distributes them to community alert brokers. A full Alert stream is also fed to a filtering component (also known as the "mini-broker"); that component allows individual LSST data rights holders to execute limited filters against the stream, producing filtered feeds that are then distributed to the individuals.

6.1.3 Prompt Quality Control

This service collects information on Prompt science and calibration payload execution, post-processes the science data products from the Data Backbone to generate additional measurements, and monitors the measurement values against defined thresholds, providing an automated quality control capability for potentially detecting issues with the environment, telescope, camera, data acquisition, or data processing. Alarms stemming from threshold crossings are delivered to Observatory operators and to LSST Data Facility Production Scientists for verification, analysis, and resolution.

6.2 Interfaces

Prompt Processing to Alert Distribution: these interface through a reliable transport system.

Prompt Processing to Batch Production: in the event that Prompt Processing runs over its allotted time window, processing can be cancelled and the failure recorded, after which Offline Processing within the Batch Production service will redo the processing at a later time. Note that it may be possible, if sufficient computational resources have been provisioned, for the Prompt Processing to be allowed to continue to run, with spare capacity used to maintain latency for future visits. In that case, there would effectively be an infinite time window.

Science Payloads to Data Backbone: payloads use the Data Butler as a client to access files

and catalog databases within the Data Backbone.

7 Offline Production Enclave

This enclave is responsible for all longer-period data processing operations, including the largest and most complex payloads supported by the DMS: the annual Data Release Production (DRP) and periodic Calibration Products Productions (CPPs). Note that CPPs will execute even while the annual DRP is executing. The Offline Quality Control Service monitors the science data products, notifying operators if any anomalies are found.

The services in this enclave need to run efficiently and reliably over long periods of time, spanning weeks or months. They need to execute millions or billions of tasks when their input data becomes available while tracking the status of each and preserving its output. They are designed to execute autonomously with human oversight, monitoring, and control primarily at the highest level, although provisions are made for manual intervention if absolutely necessary.

This enclave does not have direct users (besides the operators of its services); the services within it obtain inputs from the Data Backbone and place their outputs into the Data Backbone.

7.1 Service Descriptions

7.1.1 Batch Production

This service executes science payloads as "campaigns" consisting of a defined pipeline, a defined configuration, and defined inputs and outputs. Many different payloads may be executed on many different campaign cadences. These include:

- Offline processing for Prompt data products
- Calibration Products Production
- Template Production
- Special Programs Productions

- Data Release Production

The service is able to handle massively distributed computing, executing jobs when their inputs become available and tracking their status and outputs. It ensures that the data needed for a job is accessible to it and that outputs (including log files, if any) are preserved. It can allocate work across multiple enclaves, in particular between NCSA and the Satellite Facility at CC-IN2P3, which will have capacity for half of the DRP processing. It utilizes the Campaign Management and Workload/Workflow software products to accomplish these goals.

Offline processing ensures that Prompt data products are generated within the nominal 24 hours. It includes catch-up of missed nightly processing as well as daytime processing such as the Moving Object Processing System.

Calibration Products Production campaigns execute various CPP science payloads at intervals to generate Master Calibration Images and populate the Calibration Database with information derived from analysis of raw calibration images from the Data Backbone and information in the Transformed EFD. This includes the computation of crosstalk correction matrices. Additional information such as external catalogs are also taken from the Data Backbone. The intervals at which this service executes will depend on the stability of Observatory systems but are expected to include at least monthly and annual executions. The annual execution is a prerequisite for the subsequent execution of the Data Release Production. The service involves human scientist/operator input to determine initial configurations of the payload, to monitor and analyze the results, and possibly to provide additional configuration information during execution.

Template Production campaigns, typically run annually, generate the static sky templates used by Alert Production, based on raw science images from the Data Backbone.

Special Programs Productions campaigns perform custom analyses on raw science images taken for these programs. The cadence for these campaigns may vary based on the particular Special Program.

Data Release Production campaigns execute the DRP science payload annually to generate all Data Release data products after the annual CPP is executed. A small-scale (about 10% of the sky) mini-production is executed first to ensure readiness, followed by the full production. Raw science images are taken from the Data Backbone along with Master Calibration Images

and information from the Transformed EFD. Additional information such as external catalogs may also be taken from the Data Backbone.

Output data products from both the mini-production and the main production are loaded into the Data Backbone, including both images and catalogs. From there, they are analyzed by LSST staff scientists and selected external scientists using the Science Validation instance of the LSST Science Platform to ensure quality and readiness for release. The to-be-released data products are loaded into the Data Access Center services, and access is then enabled on the release date. The service involves human scientist/operator/programmer input to determine initial configurations of the payload, to monitor and analyze results, and, when absolutely necessary, to make “hot fixes” during execution that maintain adequate consistency of the resulting data products.

7.1.2 Offline Quality Control

This collects information on Calibration, Template Generation, and Data Release science payload execution, post-processes the science data products from the Data Backbone to generate additional measurements, and monitors the measurement values against defined thresholds, providing an automated quality control capability for potentially detecting issues with the data processing but also the environment, telescope, camera, or data acquisition. Alarms stemming from threshold crossings are delivered to LSST Data Facility Production Scientists for verification, analysis, and resolution.

7.2 Interfaces

Batch Production to Data Backbone: for large-scale productions, a workflow system is expected to stage files and selected database entries from the Data Backbone to local storage for access by the science payloads via the Data Butler. Similarly, the staging system will ingest output images and catalogs into the Data Backbone.

Batch Production to Satellite Facility: the Data Backbone will transfer raw data, including images, metadata, and the Transformed EFD, to the Satellite Facility. Intermediate data products will be transferred back via the Data Backbone for further computations in the Offline Production Enclave.

8 Data Access Centers

There are two Data Access Centers, one in the US at NCSA and one in Chile at the Base. These DACs are responsible for all science-user-facing services, primarily instances of the LSST Science Platform (LSP). The LSP is the preferred analytic interface to LSST data products in the DAC. It provides computation and data access on both interactive and asynchronous timescales. The US DAC also includes a service for distributing bulk data on daily and annual (Data Release) timescales to partner institutions, collaborations, and LSST Education and Public Outreach (EPO).

The services in each enclave must support multiple users simultaneously and securely. The LSP must be responsive to science user needs; updates are likely to occur at a different cadence from the other enclaves as a result. The LSP must operate reliably enough that scientific work is not impeded.

8.1 Service Descriptions

8.1.1 LSST Science Platform DAC instances

This service provides an exploratory analysis environment for science users. It can be further broken down into three “Aspects” that it presents to end users, along with underlying “backend services” that users can take advantage of, as illustrated in Figure 7.

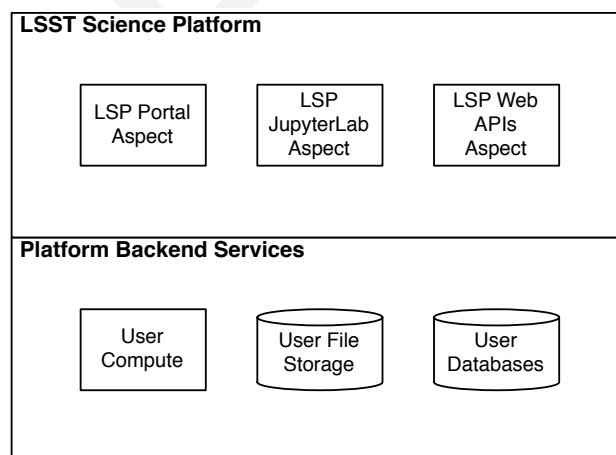


FIGURE 7: LSST Science Platform

The “Portal” Aspect provides a pre-specified yet flexible discovery, query, and viewing tool. The

“JupyterLab” Aspect provides a fully flexible (“notebook”) environment incorporating rendering of images, catalogs, and plots and providing for execution of LSST-provided and custom algorithms. The “Web API” Aspect provides a language-independent, VO-compliant Web Services data access API with extensions for LSST capabilities and volumes. Access is provided via all three Aspects to all data products, including images, catalogs, and metadata. The Web API Aspect regenerates “virtual” data products on demand when required.

The backend services provide general-purpose user computation, including batch job submission from the Containerized Application Management Service and Batch Computing Service pools; file storage for User Generated data products which is accessible to all three Aspects and in particular exposed through one or more Web API Aspect services; and database storage for User Generated relational tables which is also accessible to all three Aspects. User Generated data may be shared with individual users, with groups, or with all DAC users (data rights holders). Resource management of the backend services is based on a small “birthright” quota with additional resources allocated by a committee.

LSST Science Platform instances access read-only data products, including files and databases, from the Data Backbone. In addition, files may be cached within the LSP instance for speed, and large-scale catalogs are typically loaded into an instance of the Qserv database management system for efficient query and analysis.

All usage of any LSST Science Platform instance requires authentication to ensure availability only to LSST data rights holders or LSST operations staff.

8.1.2 Bulk Distribution

This service is used to transmit Prompt and Data Release data products to partners such as LSST Education and Public Outreach, the UK LSST project, and the Dark Energy Science Collaboration. It extracts data products from the Data Backbone and transmits them over high bandwidth connections to designated, pre-subscribed partners.

8.2 Interfaces

Bulk Distribution and LSST Science Platform to Data Backbone: Both DAC-resident services retrieve their data, including raw images, nightly and annual image and catalog data products,

metadata, and provenance, from the Data Backbone. The LSP Portal Aspect uses the LSP Web APIs to retrieve data. The LSP JupyterLab Aspect can use the LSP Web APIs and also can use the Data Butler client library to access the Data Backbone.

Bulk Distribution to partners: The exact delivery mechanism for large-scale data distribution is TBD.

9 Commissioning Cluster

9.1 Service Description

9.1.1 LSST Science Platform Commissioning instance

This instance of the LSST Science Platform for Science Validation runs on the Commissioning Cluster at the Base Facility (but also has access to computational resources at the Archive) and accesses a Base endpoint for the Data Backbone. This location at the Base lowers the latency of both access to Data Backbone-resident data (which does not have to wait for transfer over the international network) and, perhaps more importantly, for user interface operations for staff in Chile, which are served locally. Note that the Commissioning Cluster does not have direct access to the Camera Data System; it relies on the Archiver service to obtain data. The Commissioning Cluster will have direct access to the OCS's Base replica of the EFD (before transformation).

9.2 Interfaces

Commissioning Cluster to Data Backbone: The Commissioning Cluster relies on the Data Backbone for its data, like the other instances of the LSST Science Platform.

Commissioning Cluster to EFD: The Commissioning Cluster has direct read-only client access to the Base replica of the EFD (before transformation).

10 Backbone Services

Detailed concepts of operations for each service can be found in *Concept of Operations for the LSST Production Services* [LDM-230].

10.1 Service Descriptions

The Data Backbone (DBB) is a key component that provides for data storage, transport, and replication, allowing data products to move between enclaves. This service provides policy-based replication of files (including images and flat files to be loaded into databases as well as other raw and intermediate files) and databases (including metadata about files as well as other miscellaneous databases but not including the large Data Release catalogs) across multiple physical locations, including the Base, Commissioning Cluster, NCSA, and DACs. It manages caches of files at each endpoint as well as persistence to long-term archival storage (e.g. tape). It provides a registration mechanism for new datasets and database entries and a retrieval mechanism compatible with the Data Butler.

The relationships between the Data Backbone components are illustrated in Figure 8.

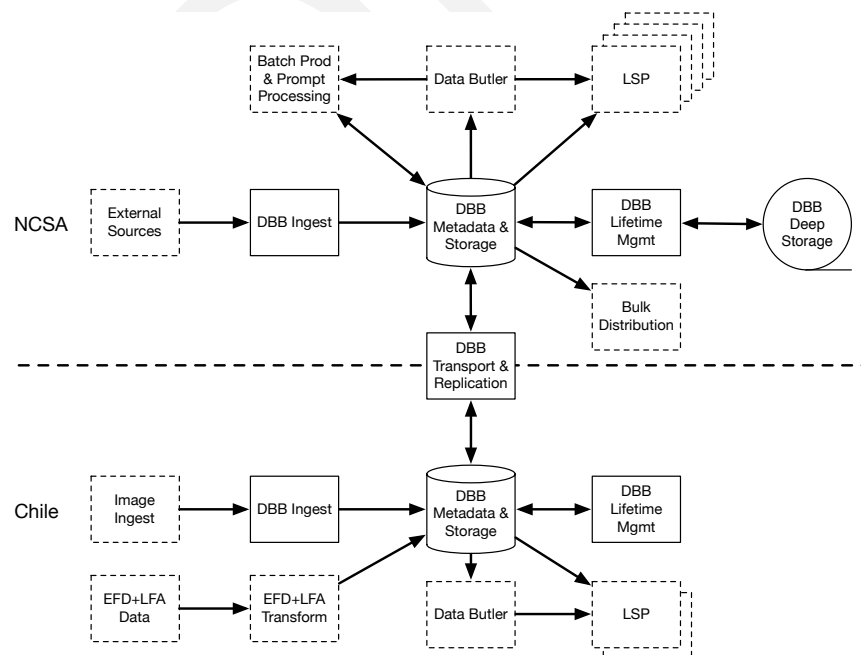


FIGURE 8: Data Backbone

10.1.1 DBB Ingest/Metadata Management

This service within the Data Backbone is responsible for maintaining and providing access to the metadata describing the location, characteristics, and provenance of the data products it manages. Part of this service involves creating the appropriate metadata during ingest when data from external sources is incorporated into the DBB. The Batch Production services will generally create the necessary DBB metadata as part of their operation, so only a minimal ingest process is needed for internally-generated data products. Metadata is kept in a database that is a superset of the registry required by the Data Butler, allowing the Butler to directly access data within the DBB.

10.1.2 DBB Lifetime Management

This service is responsible for managing the lifetimes of data products within the DBB based on a set of policies. Products may move from high-speed storage to near-line or offline storage or may be deleted completely. Some products are kept permanently. Some are kept for defined time periods as specified in requirements. Intermediates may be kept until all downstream products have been generated.

10.1.3 DBB Transport/Replication/Backup

This service is responsible for moving data products from one Facility to another and to backup and disaster recovery storage. It handles recovery if a data product is found to be missing or corrupt.

10.1.4 DBB Storage

This service is responsible for storage of data products in the DBB. The storage service provides an interface usable by the Data Butler as a datastore.

10.2 Interfaces

The Data Backbone services interact with most other deployed services.

11 Software Components

11.1 Science Payloads

These payloads are described in more detail in the DM Applications Design Document [LDM-151]. Payloads are built from application software components. Most payloads execute under control of the Batch Production service. Exceptions include the Alert Production Payload, the Raw Calibration Validation Payload, and the Daily Calibration Products Update Payload.

11.1.1 Alert Production Payload

Executes under control of the Prompt Processing service. Generates all Prompt science data products including Alerts (with the exception of Solar System object orbits) and loads them into the Data Backbone and Prompt Products Database. Transmits Alerts to Alert Distribution service. Generates image quality feedback to the OCS and observers via the Telemetry Gateway. Uses crosstalk-corrected science images and associated metadata delivered by the Prompt Processing service; uses Master Calibration Images, Template Images, Prompt Products Database, and Calibration Database information from the Data Backbone.

11.1.2 MOPS Payload

Executes after a night's observations are complete. Generates entries in the MOPS Database and the Prompt Products Database, including Solar System Object records, measurements, and orbits. Performs precovery forced photometry of transients. Uses Prompt Products Database entries and images from the Data Backbone.

11.1.3 Raw Calibration Validation Payload

Executes under control of the Prompt Processing service. Generates raw calibration image quality feedback to the OCS and observers via the Telemetry Gateway. Uses crosstalk-corrected science images and associated metadata delivered by the Prompt Processing service, Master Calibration Images, and Calibration Database information from the Data Backbone.

11.1.4 Daily Calibration Products Update Payload

Executes under control of the OCS-controlled batch processing service so that its execution can be synchronized with the observing schedule. Uses raw calibration images and information from the Transformed EFD to generate a subset of Master Calibration Images and Calibration Database entries in the Data Backbone.

11.1.5 Periodic Calibration Products Production Payload

Executes at nominally monthly intervals but perhaps as frequently as weekly or as infrequently as quarterly, depending on the stability of Observatory systems and their calibrations. Uses raw calibration images and information from the Transformed EFD to generate a subset of Master Calibration Images and Calibration Database entries in the Data Backbone.

11.1.6 Special Programs Productions Payload

Executes at program-defined intervals. Uses raw science images to generate special programs science data products, placing them in the Data Backbone.

11.1.7 Template Generation Payload

Executes if necessary to generate templates for Alert Production in between annual Data Release Productions. Uses raw science images to generate the templates, placing them in the Data Backbone.

11.1.8 Annual Calibration Products Production Payload

Executes at annual intervals prior to the start of the Data Release Production. Uses raw calibration images, information from the Transformed EFD, information from the Auxiliary Telescope Spectrograph, and external catalogs to generate Master Calibration Images and Calibration Database entries in the Data Backbone.

11.1.9 Data Release Production Payload

Executes at annual intervals, first running a “mini-DRP” over a small portion of the sky, followed by the full DRP over the entire sky. Produces science data products in the Data Backbone.

11.2 Firefly and SUIT

The Science User Interface and Tools, primarily composed of the Firefly product, provide visualization, plotting, catalog rendering, browsing, and searching elements that can be assembled into predetermined “portals” but can also be used flexibly within dynamic “notebook” environments.

11.3 Middleware

The detailed design of the Middleware components is in *Data Management Middleware Design* [LDM-152].

11.3.1 Data Butler Access Client

The Data Butler provides an access abstraction for all science payloads that enables their underlying data sources and destinations to be configured at runtime with a variety of backends ranging from local disk to network locations and a variety of serializations ranging from YAML and FITS files (extensible to HDF5 or ASDF) to database tables. The Butler client is also available within the LSST Science Platform JupyterLab environment.

11.3.2 Parallel Distributed Database (Qserv)

Underlying the catalog data access web service is a parallel distributed database required to handle the petabyte-scale, tens-of-trillions-of-rows catalogs produced by LSST.

11.3.3 Task Framework

The Task Framework is a Python class library that provides a structure (standardized class entry points and conventions) to organize low-level algorithms into potentially-reusable algorithmic components (Tasks; e.g. dark frame subtraction, object detection, object measurement), and to organize tasks into basic pipelines (SuperTasks; e.g., process a single visit, build a coadd, difference a visit). The algorithmic code is written into (Super)Tasks by overriding classes and providing implementation for standard entry points. The Task Framework allows the pipelines to be constructed and run at the level of a single node or a group of tightly-synchronized nodes. It allows for sub-node parallelization: trivial parallelization of Task execution, as well as providing (in the future) parallelization primitives for development of multi-core Tasks and synchronized multi-node Tasks.

The Task Framework serves as an interface layer between orchestration and the algorithmic code. It exposes a standard interface to “activators” (command-line runners as well as the orchestration layer and QA systems), which use it to execute the code wrapped in tasks. The Task Framework does not concern itself with fault-tolerant massively parallel execution of the pipelines over multiple (thousands) of nodes nor any staging of data that might be required; this is the concern of the orchestration middleware.

The Task Framework exposes to the orchestration system needs and capabilities of the underlying algorithmic code (i.e., the number of cores needed, expected memory-per-core, expected need for data). It may also receive from the orchestration layer the information on how to optimally run the particular task (i.e., which level of intra-node parallelization is desired).

It also includes a configuration API and a logging API.

11.3.4 ADQL Translator

The ADQL Translator serves to connect the catalog query portion of the LSST Science Platform Web APIs aspect with underlying databases, including both the Parallel Distributed Database (Qserv) and conventional relational databases.

11.3.5 Image Server

The Image Server connects the image query portion of the LSST Science Platform Web APIs aspect with underlying image data products in the Data Backbone. It also serves to regenerate "virtual" data products that have been removed for space reasons.

12 Infrastructure Services

The information technology and communications infrastructure is composed of services and systems that form the computing environments on top of which the services in the enclaves described above are deployed and operate.

12.1 Service Descriptions

Detailed concepts of operations for each service can be found in *Concept of Operations for the LSST Production Services* [LDM-230]. The detailed design of the infrastructure is in *LSST Data Facility Logical Information Technology and Communications Design* [LDM-129] and *Network Design* [LSE-78].

12.1.1 Managed Database

This service provides general-purpose relational database management that supports other services. It includes metadata and provenance, but it does not include the large catalog science data products that are generated as files and loaded into the Qserv parallel distributed database. For efficiency of resource usage and management, most databases are consolidated into a single RDBMS instance.

12.1.2 Batch Processing

This service provides execution of batch jobs with a variety of priorities from a variety of users in a variety of environments (e.g. OS and software configurations) on the underlying provisioned compute resources. It will use containerization to handle heterogeneity of environments. HTCondor is the baseline technology choice for this service.

Some compute resources are reserved for particular uses, but others can be flexibly provisioned, up to a certain maximum quota, if needed to deal with surges in processing.

The priority order for processing is:

- Prompt processing
- Offline processing for Prompt data products
- OCS-controlled batch processing
- LSP Commissioning Cluster processing
- LSP Science Validation processing
- LSP Data Access Center processing
- Template and Calibration Products Production
- Special Programs Productions
- Data Release Production

12.1.3 Containerized Application Management

This service provides compute, local-to-node storage, and local-to-LAN storage resources for deploying containerized service-oriented systems, especially the Science Platforms but also including parts of the Quality Control systems and Developer Services. It allows allocation of compute and storage resources as well as reproducible, controlled deployment of services onto those resources. Kubernetes is the baseline technology choice for this service.

12.1.4 IT Security

This service provides security, including monitoring, vulnerability management, incident detection and response, access controls, intrusion detection, and configuration management. Information security is provided in accordance with the *LSST Master Information Security Policy* [LPM-121].

12.1.5 Identity Management

This service provides authentication and authorization for all users of any DMS component, especially the LSST Science Platform instances.

12.1.6 ITC Provisioning and Management

This service provides for acquisition, change and configuration management, and provisioning of information technology components, whether purchased “bare metal”, provided by the NCSA Commons, or provided by agreements with outside providers.

This service includes deployment of non-containerized services. For example, many of the services at the Base Facility are not highly dynamic or flexible, as they primarily provide interfacing to the OCS and Camera Data System. The baseline provisioning mechanism for them is vSphere; they will be deployed using Puppet.

12.1.7 Service Management/Monitoring

These services provide management and monitoring at the service level for each computing environment. They include standard IT processes such as service design, service transition (including change, release, and configuration management), and service delivery (including incident and request response plus problem management).

Service monitoring reports in dashboard and document form on the health and status of all services.

12.2 Interfaces

The infrastructure services generally interact with all other deployed services.

Identity management instances are present in the Base Center and at NCSA. (Another replica will be maintained at the Summit.) These are used to support authentication and authorization for the other physically co-located environments: the Commissioning Cluster and the two Data Access Centers.

13 NCSA Development and Integration Enclave

This enclave encompasses environments for analysts, developers, and integration and test. Its users are the Observatory staff as they analyze raw data and processed data products to characterize them, develop new algorithms and systems, and test new versions of components and services before deployment.

Integration environments in this enclave represent various deployment environments, deployment services, test datasets, test execution services, metric measurement and tracking services. This environment includes the “Level 1” Test Stand, which includes a DM instance of the Camera DAQ used in an integration environment simulating the Base Center. It also includes the Prototype Data Access Center (PDAC), which is an integration environment simulating a Data Access Center.

13.1 Service Descriptions

13.1.1 LSST Science Platform Science Validation instance

This instance of the LSST Science Platform is customized to allow access to unreleased and intermediate data products from the Alert, Calibration Products, and Data Release Productions. It is optimized for usage by scientists within the LSST Operations team, although selected external scientists can be granted access to assist with Science Validation. Part of the optimization is to size and configure the three Aspects of the LSP appropriately; in particular, more JupyterLab usage and less portal usage is expected.

13.1.2 Developer Services

These services include a software version control service, a build, unit test, and continuous integration service, a documentation publication service, developer communications services, an issue/ticket tracking service, etc., necessary to support science and system developers as they create and debug new versions of the Data Management System.

13.2 Interfaces

LSP Science Validation instance and Developer Services to Data Backbone: All services in this enclave interface with the Data Backbone. The LSP Science Validation instance is used to inspect, analyze, and validate the data products of the Data Release Production prior to their release and so has access to those products in the Data Backbone; since it may be used to annotate the data products, it can also write to the Data Backbone. The Developer Services may use raw data, intermediate data products, and final data products to do development, perform tests, and debug problems.

Developer Services do not have direct interfaces with the rest of the operational system; they communicate via the distributed source version control system, the package management system, and the configuration system.

14 Design and Implementation Standards

Standards have been adopted by the DM Change Control Board (CCB) that apply to all component designs within the LSST DM System. Coding standards and the like that are not pertinent to design may be found in the LSST DM Developer Guide ([22]).

14.1 Python Version

All LSST DM code will run under Python 3 by 2018-01-31. Package authors may choose to have their code backward-compatible with Python 2.7, but this is only required for Science Pipelines code that is a dependency of `lsst_apps`, and then only until external dependencies become Python 3-only.

Python 2.7 will be deprecated by the time LSST begins operations, and many external dependencies are in the process of moving to being Python 3-only.

14.2 HTTPS Protocol

In the absence of a specific technical justification and acceptance by the LSST Information Security Officer and DM Change Control Board, all Web-enabled user interfaces and Web

services exposed to users and the public Internet will use the HTTPS protocol and not the HTTP protocol. To reiterate: this is only a default, and exceptions can be made when justified.

The covered interfaces include those of the three LSP Aspects (Portal, JupyterLab, and Web APIs).

The requirement to implement data access policies limiting data access to identified rights holders will require all, or nearly all, data access to be authenticated provides a strong technical justification. In addition, it appears to be appropriate "technical best practice" in the current Internet environment, in the absence of good reasons to do otherwise.

Draft

15 Appendix: Traceability

15.1 Requirement to Component Traceability

Requirement	Components
DMS-REQ-0326 Storing Approximations of Per-pixel Metadata	Data Release Production
DMS-REQ-0331 Computing Derived Quantities	LSP Web API, LSP Web API SW, Data Release Production, Distributed Database, ADQL Translator
DMS-REQ-0332 Denormalizing Database Tables	LSP Web API, LSP Web API SW, Distributed Database
DMS-REQ-0333 Maximum Likelihood Values and Covariances	Alert Production, Data Release Production, Distributed Database
DMS-REQ-0346 Data Availability	Archiving, Prompt Processing, Observatory Operations Data, Bulk Distribution, DBB Ingest/Metadata Management, DBB Lifetime Management, DBB Storage, LSP Web API, EFD Transformation, Image Ingest and Processing, Observatory Operations Data Service SW, DBB Ingest/Metadata Management SW, DBB Lifetime Management SW, LSP Web API SW, Image/Cutout Server
DMS-REQ-0347 Measurements in catalogs	LSP Web API, LSP Web API SW, Alert Production, Data Release Production, Distributed Database
DMS-REQ-0018 Raw Science Image Data Acquisition	Archiving, Image Ingest and Processing, Prompt Base Enclave
DMS-REQ-0020 Wavefront Sensor Data Acquisition	Archiving, Image Ingest and Processing, Prompt Base Enclave
DMS-REQ-0022 Crosstalk Corrected Science Image Data Acquisition	Prompt Processing, Image Ingest and Processing, Prompt Base Enclave
DMS-REQ-0024 Raw Image Assembly	Archiving, Image Ingest and Processing, Prompt Base Enclave
DMS-REQ-0068 Raw Science Image Metadata	Archiving, DBB Ingest/Metadata Management, Image Ingest and Processing, DBB Ingest/Metadata Management SW, Prompt Base Enclave
DMS-REQ-0265 Guider Calibration Data Acquisition	Archiving, OCS-Driven Batch, Image Ingest and Processing, OCS Batch SW, Raw Calibration Validation, Daily Calibration Update, Periodic Calibration, Annual Calibration, Prompt Base Enclave

Requirement	Components
DMS-REQ-0004 Nightly Data Accessible Within 24 hrs	Prompt Processing, Alert Distribution, Alert Distribution SW, EFD Transformation, Image Ingest and Processing, Alert Production, MOPS and Forced Photometry, Archive Base Enclave, Archive NCSA Enclave, DAC Chile Enclave, DAC US Enclave, Offline Production Enclave, Prompt Base Enclave, Prompt NCSA Enclave
DMS-REQ-0010 Difference Exposures	Alert Production, Archive Base Enclave, Archive NCSA Enclave, Prompt NCSA Enclave
DMS-REQ-0074 Difference Exposure Attributes	DBB Ingest/Metadata Management, DBB Ingest/Metadata Management SW, Alert Production, Prompt NCSA Enclave
DMS-REQ-0069 Processed Visit Images	Alert Production, Archive Base Enclave, Archive NCSA Enclave, Prompt NCSA Enclave
DMS-REQ-0029 Generate Photometric Zero-point for Visit Image	Alert Production, Archive Base Enclave, Archive NCSA Enclave, Prompt NCSA Enclave
DMS-REQ-0030 Generate WCS for Visit Images	Alert Production, Archive Base Enclave, Archive NCSA Enclave, Prompt NCSA Enclave
DMS-REQ-0070 Generate PSF for Visit Images	Alert Production, Prompt NCSA Enclave
DMS-REQ-0072 Processed Visit Image Content	Alert Production, Prompt NCSA Enclave
DMS-REQ-0327 Background Model Calculation	Alert Production, Archive Base Enclave, Archive NCSA Enclave, Prompt NCSA Enclave
DMS-REQ-0328 Documenting Image Characterization	Alert Production, Prompt NCSA Enclave
DMS-REQ-0097 Level 1 Data Quality Report Definition	Prompt Quality Control, Quality Control SW, Alert Production, Prompt Base Enclave, Prompt NCSA Enclave
DMS-REQ-0099 Level 1 Performance Report Definition	Archiving, Prompt Processing, Prompt Quality Control, Image Ingest and Processing, Quality Control SW, Prompt Base Enclave, Prompt NCSA Enclave
DMS-REQ-0101 Level 1 Calibration Report Definition	OCS-Driven Batch, Prompt Quality Control, OCS Batch SW, Quality Control SW, Raw Calibration Validation, Daily Calibration Update, Prompt Base Enclave, Prompt NCSA Enclave
DMS-REQ-0266 Exposure Catalog	DBB Ingest/Metadata Management, Header Service SW, DBB Ingest/Metadata Management SW, Alert Production, Archive Base Enclave, Archive NCSA Enclave, Prompt NCSA Enclave
DMS-REQ-0269 DIASource Catalog	DBB Ingest/Metadata Management, DBB Ingest/Metadata Management SW, Alert Production, Archive Base Enclave, Archive NCSA Enclave, Prompt NCSA Enclave
DMS-REQ-0270 Faint DIASource Measurements	Alert Production, Archive Base Enclave, Archive NCSA Enclave, Prompt NCSA Enclave

Requirement	Components
DMS-REQ-0271 DIAObject Catalog	DBB Ingest/Metadata Management, DBB Ingest/Metadata Management SW, Alert Production, Archive Base Enclave, Archive NCSA Enclave, Prompt NCSA Enclave
DMS-REQ-0272 DIAObject Attributes	Alert Production, Archive Base Enclave, Archive NCSA Enclave, Prompt NCSA Enclave
DMS-REQ-0273 SSOBJECT Catalog	DBB Ingest/Metadata Management, DBB Ingest/Metadata Management SW, MOPS and Forced Photometry, Archive Base Enclave, Archive NCSA Enclave, Prompt NCSA Enclave
DMS-REQ-0274 Alert Content	Alert Production, Archive Base Enclave, Archive NCSA Enclave, Prompt NCSA Enclave
DMS-REQ-0317 DIAForcedSource Catalog	DBB Ingest/Metadata Management, DBB Ingest/Metadata Management SW, Alert Production, MOPS and Forced Photometry, Archive Base Enclave, Archive NCSA Enclave, Prompt NCSA Enclave
DMS-REQ-0319 Characterizing Variability	Alert Production, MOPS and Forced Photometry, Prompt NCSA Enclave
DMS-REQ-0323 Calculating SSOBJECT Parameters	LSP Web API, LSP Web API SW, ADQL Translator, DAC Chile Enclave, DAC US Enclave
DMS-REQ-0324 Matching DIASources to Objects	LSP Web API, LSP Web API SW, Alert Production, Archive Base Enclave, Archive NCSA Enclave, DAC Chile Enclave, DAC US Enclave
DMS-REQ-0325 Regenerating L1 Data Products During Data Release Processing	Data Release Production, Offline Production Enclave
DMS-REQ-0353 Publishing predicted visit schedule	Planned Observation Publication, Planned Observation Publication SW, Prompt Base Enclave
DMS-REQ-0034 Associate Sources to Objects	Data Release Production, Offline Production Enclave
DMS-REQ-0047 Provide PSF for Coadded Images	Data Release Production, Offline Production Enclave
DMS-REQ-0103 Produce Images for EPO	Data Release Production, Offline Production Enclave
DMS-REQ-0106 Coadded Image Provenance	Data Release Production, Archive Base Enclave, Archive NCSA Enclave, Offline Production Enclave
DMS-REQ-0267 Source Catalog	Data Release Production, Distributed Database, Archive Base Enclave, Archive NCSA Enclave, Offline Production Enclave
DMS-REQ-0268 Forced-Source Catalog	Data Release Production, Distributed Database, Archive Base Enclave, Archive NCSA Enclave, Offline Production Enclave
DMS-REQ-0275 Object Catalog	Data Release Production, Distributed Database, Archive Base Enclave, Archive NCSA Enclave, Offline Production Enclave
DMS-REQ-0046 Provide Photometric Redshifts of Galaxies	Data Release Production, Distributed Database, Offline Production Enclave

Requirement	Components
DMS-REQ-0276 Object Characterization	Data Release Production, Distributed Database
DMS-REQ-0277 Coadd Source Catalog	Data Release Production, Distributed Database, Offline Production Enclave
DMS-REQ-0349 Detecting extended low surface brightness objects	Data Release Production
DMS-REQ-0278 Coadd Image Method Constraints	Data Release Production, Offline Production Enclave
DMS-REQ-0279 Deep Detection Coadds	Data Release Production, Offline Production Enclave
DMS-REQ-0280 Template Coadds	Template Generation, Data Release Production, Offline Production Enclave
DMS-REQ-0281 Multi-band Coadds	Data Release Production, Offline Production Enclave
DMS-REQ-0329 All-Sky Visualization of Data Releases	Data Release Production, Offline Production Enclave
DMS-REQ-0330 Best Seeing Coadds	Data Release Production, Offline Production Enclave
DMS-REQ-0334 Persisting Data Products	DBB Ingest/Metadata Management, DBB Lifetime Management, DBB Storage, LSP Web API, DBB Ingest/Metadata Management SW, DBB Lifetime Management SW, LSP Web API SW, Image/Cutout Server, Archive Base Enclave, Archive NCSA Enclave, DAC Chile Enclave, DAC US Enclave, Offline Production Enclave
DMS-REQ-0335 PSF-Matched Coadds	Data Release Production, Offline Production Enclave
DMS-REQ-0337 Detecting faint variable objects	Data Release Production
DMS-REQ-0338 Targeted Coadds	DBB Ingest/Metadata Management, DBB Lifetime Management, DBB Storage, LSP Web API, DBB Ingest/Metadata Management SW, DBB Lifetime Management SW, LSP Web API SW, Image/Cutout Server, Archive Base Enclave, Archive NCSA Enclave, DAC Chile Enclave, DAC US Enclave
DMS-REQ-0339 Tracking Characterization Changes Between Data Releases	DBB Ingest/Metadata Management, DBB Lifetime Management, LSP Web API, DBB Ingest/Metadata Management SW, DBB Lifetime Management SW, LSP Web API SW, Image/Cutout Server, DAC Chile Enclave, DAC US Enclave
DMS-REQ-0059 Bad Pixel Map	Daily Calibration Update, Periodic Calibration, Annual Calibration, Offline Production Enclave
DMS-REQ-0060 Bias Residual Image	Daily Calibration Update, Periodic Calibration, Annual Calibration, Offline Production Enclave
DMS-REQ-0061 Crosstalk Correction Matrix	Daily Calibration Update, Periodic Calibration, Annual Calibration, Offline Production Enclave

Requirement			Components
DMS-REQ-0062	Illumination	Correction Frame	Daily Calibration Update, Periodic Calibration, Annual Calibration, Offline Production Enclave
DMS-REQ-0063	Monochromatic	Flatfield Data Cube	Daily Calibration Update, Periodic Calibration, Annual Calibration, Offline Production Enclave
DMS-REQ-0130	Calibration Data Products		DBB Ingest/Metadata Management, DBB Storage, DBB Ingest/Metadata Management SW, Daily Calibration Update, Periodic Calibration, Annual Calibration, Offline Production Enclave
DMS-REQ-0132	Calibration	Image Provenance	DBB Ingest/Metadata Management, DBB Ingest/Metadata Management SW, Daily Calibration Update, Periodic Calibration, Annual Calibration, Offline Production Enclave
DMS-REQ-0282	Dark	Current Correction Frame	Daily Calibration Update, Periodic Calibration, Annual Calibration, Offline Production Enclave
DMS-REQ-0283	Fringe Correction Frame		Daily Calibration Update, Periodic Calibration, Annual Calibration, Offline Production Enclave
DMS-REQ-0320	Processing of Data From Special Programs		Special Programs Productions, Data Release Production, Task Framework, Offline Production Enclave, Prompt NCSA Enclave
DMS-REQ-0321	Level 1 Processing of Special Programs Data		Prompt Processing, Image Ingest and Processing, Alert Production, MOPS and Forced Photometry, Prompt NCSA Enclave
DMS-REQ-0322	Special Programs Database		DBB Ingest/Metadata Management, LSP Web API, DBB Ingest/Metadata Management SW, LSP Web API SW, Special Programs Productions, Distributed Database, ADQL Translator, Archive Base Enclave, Archive NCSA Enclave, DAC Chile Enclave, DAC US Enclave
DMS-REQ-0344	Constraints on Level 1 Special Program Products Generation		Prompt Processing, DBB Transport/Replication/Backup, DBB Storage, LSP Web API, Image Ingest and Processing, DBB Transport/Replication/Backup SW, LSP Web API SW, Alert Production, MOPS and Forced Photometry, Archive Base Enclave, Archive NCSA Enclave, DAC Chile Enclave, DAC US Enclave, Prompt NCSA Enclave
DMS-REQ-0291	Query Repeatability		DBB Ingest/Metadata Management, LSP Web API, DBB Ingest/Metadata Management SW, LSP Web API SW, Distributed Database, ADQL Translator, Archive Base Enclave, Archive NCSA Enclave, DAC Chile Enclave, DAC US Enclave
DMS-REQ-0292	Uniqueness of IDs Across Data Releases		DBB Ingest/Metadata Management, LSP Web API, DBB Ingest/Metadata Management SW, LSP Web API SW, Distributed Database
DMS-REQ-0293	Selection of Datasets		DBB Ingest/Metadata Management, LSP Web API, DBB Ingest/Metadata Management SW, LSP Web API SW, Data Butler, Distributed Database, Image/Cutout Server

Requirement	Components
DMS-REQ-0294 Processing of Datasets	Prompt Processing, OCS-Driven Batch, Batch Production, Image Ingest and Processing, OCS Batch SW, Campaign Management, Workload/Workflow, Task Framework
DMS-REQ-0295 Transparent Data Access	LSP Web API, LSP Web API SW, Data Butler
DMS-REQ-0002 Transient Alert Distribution	Prompt Processing, Alert Distribution, Alert Distribution SW, Alert Production, Prompt NCSA Enclave
DMS-REQ-0089 Solar System Objects Available Within Specified Time	DBB Ingest/Metadata Management, DBB Transport/Replication/Backup, DBB Storage, LSP Web API, DBB Ingest/Metadata Management SW, DBB Transport/Replication/Backup SW, LSP Web API SW, MOPS and Forced Photometry, Archive Base Enclave, Archive NCSA Enclave, DAC Chile Enclave, DAC US Enclave
DMS-REQ-0096 Generate Data Quality Report Within Specified Time	Prompt Quality Control, Quality Control SW, Prompt Base Enclave, Prompt NCSA Enclave
DMS-REQ-0098 Generate DMS Performance Report Within Specified Time	Prompt Quality Control, Quality Control SW, Prompt Base Enclave, Prompt NCSA Enclave
DMS-REQ-0100 Generate Calibration Report Within Specified Time	Prompt Quality Control, Quality Control SW, Daily Calibration Update, Prompt Base Enclave, Prompt NCSA Enclave
DMS-REQ-0131 Calibration Images Available Within Specified Time	Prompt Processing, OCS-Driven Batch, DBB Ingest/Metadata Management, DBB Transport/Replication/Backup, DBB Storage, Image Ingest and Processing, OCS Batch SW, DBB Ingest/Metadata Management SW, DBB Transport/Replication/Backup SW, Raw Calibration Validation, Daily Calibration Update, Archive Base Enclave, Archive NCSA Enclave, DAC Chile Enclave, DAC US Enclave, Offline Production Enclave, Prompt NCSA Enclave
DMS-REQ-0284 Level-1 Production Completeness	Prompt Processing, Image Ingest and Processing, Archive Base Enclave, Archive NCSA Enclave, DAC Chile Enclave, DAC US Enclave, Offline Production Enclave, Prompt Base Enclave, Prompt NCSA Enclave
DMS-REQ-0285 Level 1 Source Association	Alert Production
DMS-REQ-0286 SObject Precovery	MOPS and Forced Photometry, Offline Production Enclave
DMS-REQ-0287 DIASource Precovery	DBB Ingest/Metadata Management, DBB Transport/Replication/Backup, DBB Storage, LSP Web API, DBB Ingest/Metadata Management SW, DBB Transport/Replication/Backup SW, LSP Web API SW, MOPS and Forced Photometry, Archive Base Enclave, Archive NCSA Enclave, DAC Chile Enclave, DAC US Enclave, Offline Production Enclave

Requirement	Components
DMS-REQ-0288 Use of External Orbit Catalogs	Alert Production, MOPS and Forced Photometry
DMS-REQ-0342 Alert Filtering Service	Alert Distribution, Alert Distribution SW
DMS-REQ-0343 Performance Requirements for LSST Alert Filtering Service	Alert Distribution, Alert Distribution SW, Prompt NCSA Enclave
DMS-REQ-0348 Pre-defined alert filters	Alert Distribution, Alert Distribution SW
DMS-REQ-0289 Calibration Production Processing	OCS-Driven Batch, OCS Batch SW, Daily Calibration Update, Periodic Calibration, Annual Calibration, Offline Production Enclave
DMS-REQ-0350 Associating Objects across data releases	Data Release Production, Distributed Database
DMS-REQ-0119 DAC resource allocation for Level 3 processing	LSP Portal, LSP JupyterLab, LSP Web API, LSP Portal and SUIT, LSP JupyterLab SW, LSP Web API SW, DAC Chile Enclave, DAC US Enclave
DMS-REQ-0120 Level 3 Data Product Self Consistency	DBB Ingest/Metadata Management, LSP Web API, DBB Ingest/Metadata Management SW, LSP Web API SW, DAC Chile Enclave, DAC US Enclave
DMS-REQ-0121 Provenance for Level 3 processing at DACs	LSP Web API, LSP Web API SW, Data Butler, Task Framework, DAC Chile Enclave, DAC US Enclave
DMS-REQ-0125 Software framework for Level 3 catalog processing	Data Butler, Task Framework
DMS-REQ-0128 Software framework for Level 3 image processing	Data Butler, Task Framework
DMS-REQ-0290 Level 3 Data Import	LSP Web API, LSP Web API SW, Distributed Database
DMS-REQ-0340 Access Controls of Level 3 Data Products	Distributed Database, ADQL Translator, DAC Chile Enclave, DAC US Enclave
DMS-REQ-0308 Software Architecture to Enable Community Re-Use	Batch Production, Workload/Workflow, Alert Production, MOPS and Forced Photometry, Raw Calibration Validation, Daily Calibration Update, Periodic Calibration, Template Generation, Annual Calibration, Data Release Production, Science Pipelines Libraries, Data Butler, Task Framework
DMS-REQ-0009 Simulated Data	Alert Production, Data Release Production
DMS-REQ-0032 Image Differencing	Alert Production, Data Release Production, Science Pipelines Libraries
DMS-REQ-0033 Provide Source Detection Software	Alert Production, Data Release Production, Science Pipelines Libraries
DMS-REQ-0042 Provide Astrometric Model	Alert Production, Data Release Production, Science Pipelines Libraries
DMS-REQ-0043 Provide Calibrated Photometry	Alert Production, Data Release Production, Science Pipelines Libraries

Requirement	Components
DMS-REQ-0052 Enable a Range of Shape Measurement Approaches	Alert Production, Data Release Production, Science Pipelines Libraries
DMS-REQ-0160 Provide User Interface Services	LSP Portal, LSP Portal and SUIT, Firefly
DMS-REQ-0296 Pre-cursor, and Real Data	Science Pipelines Libraries, Data Butler
DMS-REQ-0351 Provide Beam Projector Coordinate Calculation Software	Science Pipelines Libraries
DMS-REQ-0065 Provide Image Access Services	LSP Web API, LSP Web API SW, Image/Cutout Server
DMS-REQ-0155 Provide Data Access Services	LSP Web API, LSP Web API SW, ADQL Translator, Image/Cutout Server
DMS-REQ-0298 Data Product and Raw Data Access	LSP Web API, LSP Web API SW, ADQL Translator, Image/Cutout Server
DMS-REQ-0299 Data Product Ingest	DBB Ingest/Metadata Management, DBB Ingest/Metadata Management SW, LSP Web API SW
DMS-REQ-0300 Bulk Download Service	Bulk Distribution
DMS-REQ-0156 Provide Pipeline Execution Services	Batch Production, Campaign Management, Workload/Workflow
DMS-REQ-0302 Production Orchestration	Batch Production, Campaign Management, Workload/Workflow
DMS-REQ-0303 Production Monitoring	Batch Production, Campaign Management, Workload/Workflow
DMS-REQ-0304 Production Fault Tolerance	Batch Production, Campaign Management, Workload/Workflow, Task Framework
DMS-REQ-0158 Provide Pipeline Construction Services	Task Framework
DMS-REQ-0305 Task Specification	Task Framework
DMS-REQ-0306 Task Configuration	Task Framework
DMS-REQ-0297 DMS Initialization Component	Base Facility, NCSA Facility
DMS-REQ-0301 Control of Level-1 Production	Archiving, Prompt Processing, OCS-Driven Batch, Image Ingest and Processing, OCS Batch SW
DMS-REQ-0307 Unique Processing Coverage	Batch Production
DMS-REQ-0075 Catalog Queries	LSP Web API, LSP Web API SW, Distributed Database, ADQL Translator, DAC Chile Enclave, DAC US Enclave
DMS-REQ-0077 Maintain Archive Publicly Accessible	DBB Ingest/Metadata Management, DBB Storage, DBB Ingest/Metadata Management SW, Distributed Database, Archive Base Enclave, Archive NCSA Enclave, DAC Chile Enclave, DAC US Enclave

Requirement	Components
DMS-REQ-0078 Catalog Export Formats	LSP Web API, LSP Web API SW, ADQL Translator, Archive Base Enclave, Archive NCSA Enclave, DAC Chile Enclave, DAC US Enclave
DMS-REQ-0094 Keep Historical Alert Archive	DBB Ingest/Metadata Management, DBB Storage, DBB Ingest/Metadata Management SW, Archive Base Enclave, Archive NCSA Enclave, DAC Chile Enclave, DAC US Enclave
DMS-REQ-0102 Provide Engineering and Facility Database Archive	Archiving, DBB Ingest/Metadata Management, DBB Transport/Replication/Backup, DBB Storage, EFD Transformation, DBB Ingest/Metadata Management SW, DBB Transport/Replication/Backup SW, Archive Base Enclave, Archive NCSA Enclave, DAC Chile Enclave, DAC US Enclave, Prompt Base Enclave, Prompt NCSA Enclave
DMS-REQ-0309 Raw Data Archiving Reliability	Archiving, DBB Ingest/Metadata Management, DBB Transport/Replication/Backup, DBB Storage, EFD Transformation, Image Ingest and Processing, DBB Ingest/Metadata Management SW, DBB Transport/Replication/Backup SW, Archive Base Enclave, Archive NCSA Enclave, DAC Chile Enclave, DAC US Enclave, Prompt Base Enclave, Prompt NCSA Enclave
DMS-REQ-0310 Un-Archived Data Product Cache	DBB Ingest/Metadata Management, DBB Lifetime Management, DBB Storage, DBB Ingest/Metadata Management SW, DBB Lifetime Management SW, Archive Base Enclave, Archive NCSA Enclave, DAC Chile Enclave, DAC US Enclave
DMS-REQ-0311 Regenerate Un-archived Data Products	LSP Web API, LSP Web API SW, Image/Cutout Server, DAC Chile Enclave, DAC US Enclave
DMS-REQ-0312 Level 1 Data Product Access	Prompt Processing, LSP Web API, LSP Web API SW, Alert Production, Archive Base Enclave, Archive NCSA Enclave, DAC Chile Enclave, DAC US Enclave
DMS-REQ-0313 Level 1 and 2 Catalog Access	DBB Ingest/Metadata Management, DBB Transport/Replication/Backup, DBB Storage, LSP Web API, DBB Ingest/Metadata Management SW, DBB Transport/Replication/Backup SW, LSP Web API SW, Distributed Database, DAC Chile Enclave, DAC US Enclave
DMS-REQ-0336b Regenerating Data Products from Previous Data Releases	LSP Web API, LSP Web API SW, Image/Cutout Server, DAC Chile Enclave, DAC US Enclave
DMS-REQ-0341 Providing a Precovery Service	LSP Portal, LSP Portal and SUIT, MOPS and Forced Photometry, DAC Chile Enclave, DAC US Enclave, Offline Production Enclave
DMS-REQ-0345 Logging of catalog queries	LSP Web API, LSP Web API SW, Distributed Database, ADQL Translator, DAC Chile Enclave, DAC US Enclave

Requirement	Components
DMS-REQ-0363 Access to Previous Data Releases	DBB Ingest/Metadata Management, DBB Storage, LSP Portal, LSP Web API, DBB Ingest/Metadata Management SW, LSP Portal and SUIT, LSP Web API SW, Distributed Database, Archive Base Enclave, Archive NCSA Enclave, DAC Chile Enclave, DAC US Enclave
DMS-REQ-0364 Data Access Services	DBB Ingest/Metadata Management, DBB Storage, LSP Portal, LSP Web API, DBB Ingest/Metadata Management SW, LSP Portal and SUIT, LSP Web API SW, ADQL Translator, Archive Base Enclave, Archive NCSA Enclave, DAC Chile Enclave, DAC US Enclave
DMS-REQ-0365 Operations Subsets	DBB Ingest/Metadata Management, DBB Storage, LSP Portal, LSP Web API, DBB Ingest/Metadata Management SW, LSP Portal and SUIT, LSP Web API SW, Distributed Database, Archive Base Enclave, Archive NCSA Enclave, DAC Chile Enclave, DAC US Enclave
DMS-REQ-0366 Subsets Support	DBB Ingest/Metadata Management, DBB Transport/Replication/Backup, DBB Storage, LSP Portal, LSP Web API, DBB Ingest/Metadata Management SW, DBB Transport/Replication/Backup SW, LSP Portal and SUIT, LSP Web API SW, Distributed Database, Archive Base Enclave, Archive NCSA Enclave, DAC Chile Enclave, DAC US Enclave
DMS-REQ-0367 Access Services Performance	DBB Storage, LSP Portal, LSP Web API, LSP Portal and SUIT, LSP Web API SW, Distributed Database, Archive Base Enclave, Archive NCSA Enclave, DAC Chile Enclave, DAC US Enclave
DMS-REQ-0368 Implementation Provisions	DBB Storage, LSP Portal, LSP Web API, LSP Portal and SUIT, LSP Web API SW, Distributed Database, ADQL Translator, Image/Cutout Server, Archive Base Enclave, Archive NCSA Enclave, DAC Chile Enclave, DAC US Enclave
DMS-REQ-0369 Evolution	DBB Ingest/Metadata Management, LSP Portal, LSP Web API, DBB Ingest/Metadata Management SW, LSP Portal and SUIT, LSP Web API SW, Distributed Database, ADQL Translator, Archive Base Enclave, Archive NCSA Enclave, DAC Chile Enclave, DAC US Enclave
DMS-REQ-0370 Older Release Behavior	DBB Ingest/Metadata Management, DBB Transport/Replication/Backup, DBB Storage, LSP Portal, LSP Web API, DBB Ingest/Metadata Management SW, DBB Transport/Replication/Backup SW, LSP Portal and SUIT, LSP Web API SW, Distributed Database, Archive Base Enclave, Archive NCSA Enclave, DAC Chile Enclave, DAC US Enclave

Requirement	Components
DMS-REQ-0371 Query Availability	LSP Portal, LSP Web API, LSP Portal and SUIT, LSP Web API SW, Distributed Database
DMS-REQ-0008 Pipeline Availability	Archiving, Prompt Processing, OCS-Driven Batch, Telemetry Gateway, Alert Distribution, Batch Production, DBB Ingest/Metadata Management, DBB Transport/Replication/Backup, DBB Storage, Alert Distribution SW, EFD Transformation, Image Ingest and Processing, OCS Batch SW, Campaign Management, Workload/Workflow, DBB Ingest/Metadata Management SW, DBB Transport/Replication/Backup SW, Network Management, Base Facility, NCSA Facility, Offline Production Enclave, Prompt Base Enclave, Prompt NCSA Enclave
DMS-REQ-0161 Optimization of Cost, Reliability and Availability in Order	Alert Distribution, DBB Ingest/Metadata Management, DBB Transport/Replication/Backup, DBB Storage, LSP Portal, LSP JupyterLab, LSP Web API, Alert Distribution SW, DBB Ingest/Metadata Management SW, DBB Transport/Replication/Backup SW, LSP Portal and SUIT, LSP JupyterLab SW, LSP Web API SW, Base Facility, NCSA Facility, Archive Base Enclave, Archive NCSA Enclave, Commissioning Cluster Enclave, DAC Chile Enclave, DAC US Enclave, Offline Production Enclave, Prompt Base Enclave, Prompt NCSA Enclave
DMS-REQ-0162 Pipeline Throughput	Archiving, Prompt Processing, OCS-Driven Batch, Alert Distribution, DBB Ingest/Metadata Management, DBB Transport/Replication/Backup, DBB Storage, Alert Distribution SW, OCS Batch SW, DBB Ingest/Metadata Management SW, DBB Transport/Replication/Backup SW, Base Facility, NCSA Facility, Archive Base Enclave, Archive NCSA Enclave, DAC Chile Enclave, DAC US Enclave, Offline Production Enclave, Prompt Base Enclave, Prompt NCSA Enclave
DMS-REQ-0163 Re-processing Capacity	Batch Production, DBB Ingest/Metadata Management, DBB Transport/Replication/Backup, DBB Storage, Campaign Management, Workload/Workflow, DBB Ingest/Metadata Management SW, DBB Transport/Replication/Backup SW, NCSA LAN Network, Base Facility, NCSA Facility, Archive Base Enclave, Archive NCSA Enclave, Offline Production Enclave

Requirement	Components
DMS-REQ-0164 Temporary Storage for Communications Links	DBB Ingest/Metadata Management, DBB Transport/Replication/Backup, DBB Storage, DBB Ingest/Metadata Management SW, DBB Transport/Replication/Backup SW, Base Facility, NCSA Facility, Prompt Base Enclave
DMS-REQ-0165 Infrastructure Sizing for "catching up"	Archiving, DBB Ingest/Metadata Management, DBB Transport/Replication/Backup, DBB Storage, EFD Transformation, Image Ingest and Processing, DBB Ingest/Metadata Management SW, DBB Transport/Replication/Backup SW, Summit to Base Network, Base to Archive Network, Base LAN Network, NCSA LAN Network, Base Facility, NCSA Facility, Prompt Base Enclave, Prompt NCSA Enclave
DMS-REQ-0166 Incorporate Fault-Tolerance	DBB Ingest/Metadata Management, DBB Transport/Replication/Backup, DBB Storage, DBB Ingest/Metadata Management SW, DBB Transport/Replication/Backup SW, Summit to Base Network, Base to Archive Network, Base LAN Network, NCSA LAN Network, Network Management, Base Facility, NCSA Facility, Archive Base Enclave, Archive NCSA Enclave, Commissioning Cluster Enclave, DAC Chile Enclave, DAC US Enclave, Offline Production Enclave, Prompt Base Enclave, Prompt NCSA Enclave
DMS-REQ-0167 Incorporate Autonomics	Archiving, Prompt Processing, Observatory Operations Data, Alert Distribution, Batch Production, DBB Ingest/Metadata Management, DBB Transport/Replication/Backup, DBB Storage, Alert Distribution SW, EFD Transformation, Image Ingest and Processing, Observatory Operations Data Service SW, Campaign Management, Workload/Workflow, DBB Ingest/Metadata Management SW, DBB Transport/Replication/Backup SW, Summit to Base Network, Base to Archive Network, Base LAN Network, NCSA LAN Network, Network Management, Base Facility, NCSA Facility, Archive Base Enclave, Archive NCSA Enclave, Commissioning Cluster Enclave, DAC Chile Enclave, DAC US Enclave, Offline Production Enclave, Prompt Base Enclave, Prompt NCSA Enclave

Requirement	Components
DMS-REQ-0314 Compute Platform Heterogeneity	Archiving, Prompt Processing, Observatory Operations Data, OCS-Driven Batch, Telemetry Gateway, Alert Distribution, Prompt Quality Control, Batch Production, Bulk Distribution, DBB Ingest/Metadata Management, DBB Transport/Replication/Backup, DBB Storage, LSP Portal, LSP JupyterLab, LSP Web API, Alert Distribution SW, EFD Transformation, Image Ingest and Processing, Observatory Operations Data Service SW, OCS Batch SW, Campaign Management, Workload/Workflow, Quality Control SW, DBB Ingest/Metadata Management SW, DBB Transport/Replication/Backup SW, LSP Portal and SUIT, LSP JupyterLab SW, LSP Web API SW, Data Butler, Task Framework, Base Facility, NCSA Facility, Archive Base Enclave, Archive NCSA Enclave, Commissioning Cluster Enclave, DAC Chile Enclave, DAC US Enclave, Offline Production Enclave, Prompt Base Enclave, Prompt NCSA Enclave
DMS-REQ-0318 Data Management Unscheduled Downtime	Archiving, Prompt Processing, Observatory Operations Data, OCS-Driven Batch, Telemetry Gateway, Alert Distribution, Prompt Quality Control, Batch Production, Bulk Distribution, DBB Ingest/Metadata Management, DBB Transport/Replication/Backup, DBB Storage, LSP Portal, LSP JupyterLab, LSP Web API, Alert Distribution SW, EFD Transformation, Image Ingest and Processing, Observatory Operations Data Service SW, OCS Batch SW, Campaign Management, Workload/Workflow, Quality Control SW, DBB Ingest/Metadata Management SW, DBB Transport/Replication/Backup SW, LSP Portal and SUIT, LSP JupyterLab SW, LSP Web API SW, Base Facility, NCSA Facility, Archive Base Enclave, Archive NCSA Enclave, Commissioning Cluster Enclave, DAC Chile Enclave, DAC US Enclave, Offline Production Enclave, Prompt Base Enclave, Prompt NCSA Enclave

Requirement	Components
DMS-REQ-0168 Summit Facility Data Communications	Summit to Base Network
DMS-REQ-0170 Prefer Computing and Storage Down	Base Facility, NCSA Facility
DMS-REQ-0315 DMS Communication with OCS	Archiving, Prompt Processing, OCS-Driven Batch, Telemetry Gateway, EFD Transformation, Image Ingest and Processing, OCS Batch SW, Base Facility, Prompt Base Enclave
DMS-REQ-0171 Summit to Base Network	Summit to Base Network
DMS-REQ-0172 Summit to Base Network Availability	Summit to Base Network
DMS-REQ-0173 Summit to Base Network Reliability	Summit to Base Network
DMS-REQ-0174 Summit to Base Network Secondary Link	Summit to Base Network
DMS-REQ-0175 Summit to Base Network Ownership and Operation	Summit to Base Network, Network Management
DMS-REQ-0176 Base Facility Infrastructure	DBB Ingest/Metadata Management, DBB Ingest/Metadata Management SW, Base Facility, Archive Base Enclave, Commissioning Cluster Enclave, DAC Chile Enclave, Prompt Base Enclave
DMS-REQ-0178 Base Facility Co-Location with Existing Facility	Base Facility
DMS-REQ-0316 Commissioning Cluster	Base Facility, Commissioning Cluster Enclave
DMS-REQ-0352 Base Wireless LAN (WiFi)	Base LAN Network, Base Facility
DMS-REQ-0180 Base to Archive Network	Base to Archive Network
DMS-REQ-0181 Base to Archive Network Availability	Base to Archive Network
DMS-REQ-0182 Base to Archive Network Reliability	Base to Archive Network
DMS-REQ-0183 Base to Archive Network Secondary Link	Base to Archive Network
DMS-REQ-0185 Archive Center	Bulk Distribution, DBB Ingest/Metadata Management, DBB Transport/Replication/Backup, DBB Storage, DBB Ingest/Metadata Management SW, DBB Transport/Replication/Backup SW, NCSA Facility, Archive NCSA Enclave, DAC US Enclave, Offline Production Enclave, Prompt NCSA Enclave

Requirement	Components
DMS-REQ-0186 Archive Center Disaster Recovery	Bulk Distribution, DBB Ingest/Metadata Management, DBB Transport/Replication/Backup, DBB Storage, DBB Ingest/Metadata Management SW, DBB Transport/Replication/Backup SW, NCSA Facility, Archive Base Enclave, Archive NCSA Enclave, DAC US Enclave, Offline Production Enclave
DMS-REQ-0187 Archive Center Co-Location with Existing Facility	NCSA Facility
DMS-REQ-0188 Archive to Data Access Center Network	Base to Archive Network, NCSA LAN Network
DMS-REQ-0189 Archive to Data Access Center Network Availability	Base to Archive Network, NCSA LAN Network
DMS-REQ-0190 Archive to Data Access Center Network Reliability	Base to Archive Network, NCSA LAN Network
DMS-REQ-0191 Archive to Data Access Center Network Secondary Link	Base to Archive Network, NCSA LAN Network
DMS-REQ-0122 Access to catalogs for external Level 3 processing	Bulk Distribution, DBB Ingest/Metadata Management, DBB Transport/Replication/Backup, DBB Storage, DBB Ingest/Metadata Management SW, DBB Transport/Replication/Backup SW
DMS-REQ-0123 Access to input catalogs for DAC-based Level 3 processing	Bulk Distribution, DBB Ingest/Metadata Management, DBB Transport/Replication/Backup, DBB Storage, LSP Portal, LSP JupyterLab, LSP Web API, DBB Ingest/Metadata Management SW, DBB Transport/Replication/Backup SW, LSP Portal and SUIT, LSP JupyterLab SW, LSP Web API SW, ADQL Translator, DAC Chile Enclave, DAC US Enclave
DMS-REQ-0124 Federation with external catalogs	LSP Portal, LSP JupyterLab, LSP Web API, LSP Portal and SUIT, LSP JupyterLab SW, LSP Web API SW
DMS-REQ-0126 Access to images for external Level 3 processing	Bulk Distribution, DBB Ingest/Metadata Management, DBB Transport/Replication/Backup, DBB Storage, DBB Ingest/Metadata Management SW, DBB Transport/Replication/Backup SW
DMS-REQ-0127 Access to input images for DAC-based Level 3 processing	Bulk Distribution, DBB Ingest/Metadata Management, DBB Transport/Replication/Backup, DBB Storage, LSP Portal, LSP JupyterLab, LSP Web API, DBB Ingest/Metadata Management SW, DBB Transport/Replication/Backup SW, LSP Portal and SUIT, LSP JupyterLab SW, LSP Web API SW, Image/Cutout Server, DAC Chile Enclave, DAC US Enclave

Requirement	Components
DMS-REQ-0193 Data Access Centers	Bulk Distribution, LSP Portal, LSP JupyterLab, LSP Web API, LSP Portal and SUIT, LSP JupyterLab SW, LSP Web API SW, Base LAN Network, NCSA LAN Network, Base Facility, NCSA Facility, DAC Chile Enclave, DAC US Enclave
DMS-REQ-0194 Data Access Center Simultaneous Connections	LSP Portal, LSP JupyterLab, LSP Web API, LSP Portal and SUIT, LSP JupyterLab SW, LSP Web API SW, Base LAN Network, NCSA LAN Network, DAC Chile Enclave, DAC US Enclave
DMS-REQ-0196 Data Access Center Geographical Distribution	Base Facility, NCSA Facility, DAC Chile Enclave, DAC US Enclave
DMS-REQ-0197 No Limit on Data Access Centers	DBB Ingest/Metadata Management, DBB Transport/Replication/Backup, DBB Storage, LSP Portal, LSP JupyterLab, LSP Web API, DBB Ingest/Metadata Management SW, DBB Transport/Replication/Backup SW, LSP Portal and SUIT, LSP JupyterLab SW, LSP Web API SW
CA-DM-DAQ-ICD-0051 Crosstalk Correction	
CA-DM-DAQ-ICD-0052 Correction constants for science sensors sourced by Data Management	Observatory Operations Data, Observatory Operations Data Service SW, Periodic Calibration
CA-DM-CON-ICD-0007 Provide Data Management Conditions data	Prompt Processing, Telemetry Gateway, Prompt Base Enclave
CA-DM-CON-ICD-0008 Data Management Conditions data latency	Prompt Processing, Telemetry Gateway, Prompt Base Enclave
CA-DM-CON-ICD-0013 Transport Camera image data	
CA-DM-CON-ICD-0014 Provide science sensor data	Archiving, Prompt Processing, Image Ingest and Processing, Prompt Base Enclave
CA-DM-CON-ICD-0015 Provide wavefront sensor data	Archiving, Prompt Processing, Image Ingest and Processing, Prompt Base Enclave
CA-DM-CON-ICD-0016 Provide guide sensor data	Archiving, Prompt Processing, Image Ingest and Processing, Prompt Base Enclave
CA-DM-CON-ICD-0017 Data Management load on image data interfaces	Archiving, Prompt Processing, Image Ingest and Processing, Prompt Base Enclave
CA-DM-CON-ICD-0019 Camera engineering image data archiving	Archiving, Image Ingest and Processing, Archive Base Enclave, Archive NCSA Enclave, Prompt Base Enclave, Prompt NCSA Enclave
OCS-DM-COM-ICD-0009 Command Set Implementation by Data Management	Archiving, Prompt Processing, OCS-Driven Batch, EFD Transformation, Header Service SW, Image Ingest and Processing, OCS Batch SW, Prompt Base Enclave

Requirement	Components
OCS-DM-COM-ICD-0010 Response to Immediate Commands	Archiving, Prompt Processing, OCS-Driven Batch, EFD Transformation, Header Service SW, Image Ingest and Processing, OCS Batch SW, Prompt Base Enclave
OCS-DM-COM-ICD-0003 Data Management Device Command Response Model	Archiving, Prompt Processing, OCS-Driven Batch, EFD Transformation, Header Service SW, Image Ingest and Processing, OCS Batch SW, Prompt Base Enclave
OCS-DM-COM-ICD-0004 Data Management Exposed Devices	Archiving, Prompt Processing, EFD Transformation, Image Ingest and Processing, Prompt Base Enclave
OCS-DM-COM-ICD-0005 Main Camera Archiver Device	Archiving, Image Ingest and Processing, Prompt Base Enclave
OCS-DM-COM-ICD-0006 Catch-up Archiver Device	Archiving, Image Ingest and Processing, Prompt Base Enclave
OCS-DM-COM-ICD-0007 Prompt Processing Device	Prompt Processing, Image Ingest and Processing, Prompt Base Enclave
OCS-DM-COM-ICD-0008 EFD Replicator Device	Archiving, EFD Transformation, Prompt Base Enclave
OCS-DM-COM-ICD-0011 Generic Data Management Command Set Definition	Archiving, Prompt Processing, OCS-Driven Batch, EFD Transformation, Header Service SW, Image Ingest and Processing, OCS Batch SW
OCS-DM-COM-ICD-0012 configure Command	Archiving, Prompt Processing, OCS-Driven Batch, EFD Transformation, Header Service SW, Image Ingest and Processing, OCS Batch SW
OCS-DM-COM-ICD-0013 configure Successful Completion Response	Archiving, Prompt Processing, OCS-Driven Batch, EFD Transformation, Header Service SW, Image Ingest and Processing, OCS Batch SW
OCS-DM-COM-ICD-0014 enable Command	Archiving, Prompt Processing, OCS-Driven Batch, EFD Transformation, Header Service SW, Image Ingest and Processing, OCS Batch SW
OCS-DM-COM-ICD-0015 disable Command	Archiving, Prompt Processing, OCS-Driven Batch, EFD Transformation, Header Service SW, Image Ingest and Processing, OCS Batch SW
OCS-DM-COM-ICD-0017 Data Management Telemetry Interface Model	Telemetry Gateway, Prompt Base Enclave
OCS-DM-COM-ICD-0018 Data Management Telemetry Time Stamp	Telemetry Gateway, Prompt Base Enclave
OCS-DM-COM-ICD-0019 Data Management Events and Telemetry Required by the OCS	Telemetry Gateway, Prompt Base Enclave
OCS-DM-COM-ICD-0020 Image and Visit Processing and Archiving Status	Telemetry Gateway, Prompt Base Enclave

Requirement	Components
OCS-DM-COM-ICD-0021 Data Quality Metrics	Telemetry Gateway, Prompt Base Enclave
OCS-DM-COM-ICD-0022 System Health Metrics	Telemetry Gateway, Prompt Base Enclave
OCS-DM-COM-ICD-0025 Expected Load of Queries from DM	Archiving, EFD Transformation, Prompt Base Enclave
OCS-DM-COM-ICD-0026 Engineering and Facilities Database Archiving by Data Management	Archiving, EFD Transformation, Prompt Base Enclave
OCS-DM-COM-ICD-0027 Multiple Physically Separated Copies	Archiving, EFD Transformation, Base Facility, NCSA Facility, Archive Base Enclave, Archive NCSA Enclave, Prompt Base Enclave
OCS-DM-COM-ICD-0028 Expected Data Volume	Archiving, EFD Transformation, Archive Base Enclave, Archive NCSA Enclave, Prompt Base Enclave
OCS-DM-COM-ICD-0029 Archive Latency	Archiving, EFD Transformation, Archive Base Enclave, Archive NCSA Enclave, DAC Chile Enclave, DAC US Enclave
OCS-DM-COM-ICD-0030 Replication Interface	Archiving, EFD Transformation, Archive Base Enclave, Archive NCSA Enclave, Prompt Base Enclave
DM-TS-CON-ICD-0002 Timing	Prompt Processing, Telemetry Gateway, Image Ingest and Processing, Prompt Base Enclave
DM-TS-CON-ICD-0011 Data Format	Prompt Processing, Telemetry Gateway, Prompt Base Enclave
DM-TS-CON-ICD-0006 Data	Prompt Processing, Telemetry Gateway, Prompt Base Enclave
DM-TS-CON-ICD-0007 Timing	Prompt Processing, Telemetry Gateway, Image Ingest and Processing, Prompt Base Enclave
DM-TS-CON-ICD-0008 LSST Stack Availability	Science Pipelines Libraries
DM-TS-CON-ICD-0009 Calibration Data Products	Observatory Operations Data, Prompt Base Enclave
DM-TS-CON-ICD-0004 Use OCS for data transport	Telemetry Gateway, Prompt Base Enclave
DM-TS-CON-ICD-0003 Wavefront image archive access	Observatory Operations Data, Observatory Operations Data Service SW, Base Facility, NCSA Facility, Archive Base Enclave, Archive NCSA Enclave, Offline Production Enclave, Prompt Base Enclave
EP-DM-CON-ICD-0001 US DAC Provides EPO Interface	Bulk Distribution, NCSA Facility, DAC US Enclave
EP-DM-CON-ICD-0002 EPO Authorized User of DM Science Database	DAC US Enclave
EP-DM-CON-ICD-0004 Annual DM Transfer of Catalog Tabular Data to EPO	Bulk Distribution
EP-DM-CON-ICD-0009 Catalog Format From DM	Bulk Distribution

Requirement	Components
EP-DM-CON-ICD-0013 Visualization Image Metadata Standard	LSP Web API, LSP Web API SW, Alert Production, Data Release Production, Image/Cutout Server
EP-DM-CON-ICD-0014 Color Co-Add Image Format	Bulk Distribution, Data Release Production
EP-DM-CON-ICD-0019 DM to EPO Transfer Within 30-days of Data Release	Bulk Distribution
EP-DM-CON-ICD-0021 Annual DM Transfer of Color Co-Add Images to EPO	Bulk Distribution
EP-DM-CON-ICD-0022 Annual DM Transfer of UGRIZY+Panchromatic Co-Add Images to EPO	Bulk Distribution
EP-DM-CON-ICD-0023 Nightly DM Transfer of Processed Visit Images (PVI)-Based Images to EPO	Bulk Distribution, Alert Production, Prompt NCSA Enclave
EP-DM-CON-ICD-0034 Citizen Science Data	LSP Web API, LSP Web API SW, ADQL Translator, Image/Cutout Server, DAC US Enclave

15.2 Component to Requirement Traceability

Note that only “leaf” components are traced to requirements.

Archiving

- DMS-REQ-0346 Data Availability
- DMS-REQ-0018 Raw Science Image Data Acquisition
- DMS-REQ-0020 Wavefront Sensor Data Acquisition
- DMS-REQ-0024 Raw Image Assembly
- DMS-REQ-0068 Raw Science Image Metadata
- DMS-REQ-0265 Guider Calibration Data Acquisition
- DMS-REQ-0099 Level 1 Performance Report Definition
- DMS-REQ-0301 Control of Level-1 Production
- DMS-REQ-0102 Provide Engineering and Facility Database Archive
- DMS-REQ-0309 Raw Data Archiving Reliability
- DMS-REQ-0008 Pipeline Availability
- DMS-REQ-0162 Pipeline Throughput
- DMS-REQ-0165 Infrastructure Sizing for "catching up"
- DMS-REQ-0167 Incorporate Autonomics
- DMS-REQ-0314 Compute Platform Heterogeneity
- DMS-REQ-0318 Data Management Unscheduled Downtime
- DMS-REQ-0315 DMS Communication with OCS
- CA-DM-CON-ICD-0014 Provide science sensor data
- CA-DM-CON-ICD-0015 Provide wavefront sensor data

- CA-DM-CON-ICD-0016 Provide guide sensor data
- CA-DM-CON-ICD-0017 Data Management load on image data interfaces
- CA-DM-CON-ICD-0019 Camera engineering image data archiving
- OCS-DM-COM-ICD-0009 Command Set Implementation by Data Management
- OCS-DM-COM-ICD-0010 Response to Immediate Commands
- OCS-DM-COM-ICD-0003 Data Management Device Command Response Model
- OCS-DM-COM-ICD-0004 Data Management Exposed Devices
- OCS-DM-COM-ICD-0005 Main Camera Archiver Device
- OCS-DM-COM-ICD-0006 Catch-up Archiver Device
- OCS-DM-COM-ICD-0008 EFD Replicator Device
- OCS-DM-COM-ICD-0011 Generic Data Management Command Set Definition
- OCS-DM-COM-ICD-0012 configure Command
- OCS-DM-COM-ICD-0013 configure Successful Completion Response
- OCS-DM-COM-ICD-0014 enable Command
- OCS-DM-COM-ICD-0015 disable Command
- OCS-DM-COM-ICD-0025 Expected Load of Queries from DM
- OCS-DM-COM-ICD-0026 Engineering and Facilities Database Archiving by Data Management
- OCS-DM-COM-ICD-0027 Multiple Physically Separated Copies
- OCS-DM-COM-ICD-0028 Expected Data Volume
- OCS-DM-COM-ICD-0029 Archive Latency
- OCS-DM-COM-ICD-0030 Replication Interface

Planned Observation Publication

- DMS-REQ-0353 Publishing predicted visit schedule

Prompt Processing

- DMS-REQ-0346 Data Availability
- DMS-REQ-0022 Crosstalk Corrected Science Image Data Acquisition
- DMS-REQ-0004 Nightly Data Accessible Within 24 hrs
- DMS-REQ-0099 Level 1 Performance Report Definition
- DMS-REQ-0321 Level 1 Processing of Special Programs Data
- DMS-REQ-0344 Constraints on Level 1 Special Program Products Generation
- DMS-REQ-0294 Processing of Datasets
- DMS-REQ-0002 Transient Alert Distribution
- DMS-REQ-0131 Calibration Images Available Within Specified Time
- DMS-REQ-0284 Level-1 Production Completeness
- DMS-REQ-0301 Control of Level-1 Production
- DMS-REQ-0312 Level 1 Data Product Access
- DMS-REQ-0008 Pipeline Availability
- DMS-REQ-0162 Pipeline Throughput
- DMS-REQ-0167 Incorporate Autonomics

- DMS-REQ-0314 Compute Platform Heterogeneity
- DMS-REQ-0318 Data Management Unscheduled Downtime
- DMS-REQ-0315 DMS Communication with OCS
- CA-DM-CON-ICD-0007 Provide Data Management Conditions data
- CA-DM-CON-ICD-0008 Data Management Conditions data latency
- CA-DM-CON-ICD-0014 Provide science sensor data
- CA-DM-CON-ICD-0015 Provide wavefront sensor data
- CA-DM-CON-ICD-0016 Provide guide sensor data
- CA-DM-CON-ICD-0017 Data Management load on image data interfaces
- OCS-DM-COM-ICD-0009 Command Set Implementation by Data Management
- OCS-DM-COM-ICD-0010 Response to Immediate Commands
- OCS-DM-COM-ICD-0003 Data Management Device Command Response Model
- OCS-DM-COM-ICD-0004 Data Management Exposed Devices
- OCS-DM-COM-ICD-0007 Prompt Processing Device
- OCS-DM-COM-ICD-0011 Generic Data Management Command Set Definition
- OCS-DM-COM-ICD-0012 configure Command
- OCS-DM-COM-ICD-0013 configure Successful Completion Response
- OCS-DM-COM-ICD-0014 enable Command
- OCS-DM-COM-ICD-0015 disable Command
- DM-TS-CON-ICD-0002 Timing
- DM-TS-CON-ICD-0011 Data Format
- DM-TS-CON-ICD-0006 Data
- DM-TS-CON-ICD-0007 Timing

Observatory Operations Data

- DMS-REQ-0346 Data Availability
- DMS-REQ-0167 Incorporate Autonomics
- DMS-REQ-0314 Compute Platform Heterogeneity
- DMS-REQ-0318 Data Management Unscheduled Downtime
- CA-DM-DAQ-ICD-0052 Correction constants for science sensors sourced by Data Management
- DM-TS-CON-ICD-0009 Calibration Data Products
- DM-TS-CON-ICD-0003 Wavefront image archive access

OCS-Driven Batch

- DMS-REQ-0265 Guider Calibration Data Acquisition
- DMS-REQ-0101 Level 1 Calibration Report Definition
- DMS-REQ-0294 Processing of Datasets
- DMS-REQ-0131 Calibration Images Available Within Specified Time
- DMS-REQ-0289 Calibration Production Processing
- DMS-REQ-0301 Control of Level-1 Production
- DMS-REQ-0008 Pipeline Availability

- DMS-REQ-0162 Pipeline Throughput
- DMS-REQ-0314 Compute Platform Heterogeneity
- DMS-REQ-0318 Data Management Unscheduled Downtime
- DMS-REQ-0315 DMS Communication with OCS
- OCS-DM-COM-ICD-0009 Command Set Implementation by Data Management
- OCS-DM-COM-ICD-0010 Response to Immediate Commands
- OCS-DM-COM-ICD-0003 Data Management Device Command Response Model
- OCS-DM-COM-ICD-0011 Generic Data Management Command Set Definition
- OCS-DM-COM-ICD-0012 configure Command
- OCS-DM-COM-ICD-0013 configure Successful Completion Response
- OCS-DM-COM-ICD-0014 enable Command
- OCS-DM-COM-ICD-0015 disable Command

Telemetry Gateway

- DMS-REQ-0008 Pipeline Availability
- DMS-REQ-0314 Compute Platform Heterogeneity
- DMS-REQ-0318 Data Management Unscheduled Downtime
- DMS-REQ-0315 DMS Communication with OCS
- CA-DM-CON-ICD-0007 Provide Data Management Conditions data
- CA-DM-CON-ICD-0008 Data Management Conditions data latency
- OCS-DM-COM-ICD-0017 Data Management Telemetry Interface Model
- OCS-DM-COM-ICD-0018 Data Management Telemetry Time Stamp
- OCS-DM-COM-ICD-0019 Data Management Events and Telemetry Required by the OCS
- OCS-DM-COM-ICD-0020 Image and Visit Processing and Archiving Status
- OCS-DM-COM-ICD-0021 Data Quality Metrics
- OCS-DM-COM-ICD-0022 System Health Metrics
- DM-TS-CON-ICD-0002 Timing
- DM-TS-CON-ICD-0011 Data Format
- DM-TS-CON-ICD-0006 Data
- DM-TS-CON-ICD-0007 Timing
- DM-TS-CON-ICD-0004 Use OCS for data transport

Alert Distribution

- DMS-REQ-0004 Nightly Data Accessible Within 24 hrs
- DMS-REQ-0002 Transient Alert Distribution
- DMS-REQ-0342 Alert Filtering Service
- DMS-REQ-0343 Performance Requirements for LSST Alert Filtering Service
- DMS-REQ-0348 Pre-defined alert filters
- DMS-REQ-0008 Pipeline Availability
- DMS-REQ-0161 Optimization of Cost, Reliability and Availability in Order
- DMS-REQ-0162 Pipeline Throughput

- DMS-REQ-0167 Incorporate Autonomics
- DMS-REQ-0314 Compute Platform Heterogeneity
- DMS-REQ-0318 Data Management Unscheduled Downtime

Prompt Quality Control

- DMS-REQ-0097 Level 1 Data Quality Report Definition
- DMS-REQ-0099 Level 1 Performance Report Definition
- DMS-REQ-0101 Level 1 Calibration Report Definition
- DMS-REQ-0096 Generate Data Quality Report Within Specified Time
- DMS-REQ-0098 Generate DMS Performance Report Within Specified Time
- DMS-REQ-0100 Generate Calibration Report Within Specified Time
- DMS-REQ-0314 Compute Platform Heterogeneity
- DMS-REQ-0318 Data Management Unscheduled Downtime

Batch Production

- DMS-REQ-0294 Processing of Datasets
- DMS-REQ-0308 Software Architecture to Enable Community Re-Use
- DMS-REQ-0156 Provide Pipeline Execution Services
- DMS-REQ-0302 Production Orchestration
- DMS-REQ-0303 Production Monitoring
- DMS-REQ-0304 Production Fault Tolerance
- DMS-REQ-0307 Unique Processing Coverage
- DMS-REQ-0008 Pipeline Availability
- DMS-REQ-0163 Re-processing Capacity
- DMS-REQ-0167 Incorporate Autonomics
- DMS-REQ-0314 Compute Platform Heterogeneity
- DMS-REQ-0318 Data Management Unscheduled Downtime

Bulk Distribution

- DMS-REQ-0346 Data Availability
- DMS-REQ-0300 Bulk Download Service
- DMS-REQ-0314 Compute Platform Heterogeneity
- DMS-REQ-0318 Data Management Unscheduled Downtime
- DMS-REQ-0185 Archive Center
- DMS-REQ-0186 Archive Center Disaster Recovery
- DMS-REQ-0122 Access to catalogs for external Level 3 processing
- DMS-REQ-0123 Access to input catalogs for DAC-based Level 3 processing
- DMS-REQ-0126 Access to images for external Level 3 processing
- DMS-REQ-0127 Access to input images for DAC-based Level 3 processing
- DMS-REQ-0193 Data Access Centers

- EP-DM-CON-ICD-0001 US DAC Provides EPO Interface
- EP-DM-CON-ICD-0004 Annual DM Transfer of Catalog Tabular Data to EPO
- EP-DM-CON-ICD-0009 Catalog Format From DM
- EP-DM-CON-ICD-0014 Color Co-Add Image Format
- EP-DM-CON-ICD-0019 DM to EPO Transfer Within 30-days of Data Release
- EP-DM-CON-ICD-0021 Annual DM Transfer of Color Co-Add Images to EPO
- EP-DM-CON-ICD-0022 Annual DM Transfer of UGRIZY+Panchromatic Co-Add Images to EPO
- EP-DM-CON-ICD-0023 Nightly DM Transfer of Processed Visit Images (PVI)-Based Images to EPO

DBB Ingest/Metadata Management

- DMS-REQ-0346 Data Availability
- DMS-REQ-0068 Raw Science Image Metadata
- DMS-REQ-0074 Difference Exposure Attributes
- DMS-REQ-0266 Exposure Catalog
- DMS-REQ-0269 DIASource Catalog
- DMS-REQ-0271 DIAObject Catalog
- DMS-REQ-0273 SSObject Catalog
- DMS-REQ-0317 DIAForcedSource Catalog
- DMS-REQ-0334 Persisting Data Products
- DMS-REQ-0338 Targeted Coadds
- DMS-REQ-0339 Tracking Characterization Changes Between Data Releases
- DMS-REQ-0130 Calibration Data Products
- DMS-REQ-0132 Calibration Image Provenance
- DMS-REQ-0322 Special Programs Database
- DMS-REQ-0291 Query Repeatability
- DMS-REQ-0292 Uniqueness of IDs Across Data Releases
- DMS-REQ-0293 Selection of Datasets
- DMS-REQ-0089 Solar System Objects Available Within Specified Time
- DMS-REQ-0131 Calibration Images Available Within Specified Time
- DMS-REQ-0287 DIASource Precovery
- DMS-REQ-0120 Level 3 Data Product Self Consistency
- DMS-REQ-0299 Data Product Ingest
- DMS-REQ-0077 Maintain Archive Publicly Accessible
- DMS-REQ-0094 Keep Historical Alert Archive
- DMS-REQ-0102 Provide Engineering and Facility Database Archive
- DMS-REQ-0309 Raw Data Archiving Reliability
- DMS-REQ-0310 Un-Archived Data Product Cache
- DMS-REQ-0313 Level 1 and 2 Catalog Access
- DMS-REQ-0363 Access to Previous Data Releases
- DMS-REQ-0364 Data Access Services
- DMS-REQ-0365 Operations Subsets
- DMS-REQ-0366 Subsets Support
- DMS-REQ-0369 Evolution

- DMS-REQ-0370 Older Release Behavior
- DMS-REQ-0008 Pipeline Availability
- DMS-REQ-0161 Optimization of Cost, Reliability and Availability in Order
- DMS-REQ-0162 Pipeline Throughput
- DMS-REQ-0163 Re-processing Capacity
- DMS-REQ-0164 Temporary Storage for Communications Links
- DMS-REQ-0165 Infrastructure Sizing for "catching up"
- DMS-REQ-0166 Incorporate Fault-Tolerance
- DMS-REQ-0167 Incorporate Autonomics
- DMS-REQ-0314 Compute Platform Heterogeneity
- DMS-REQ-0318 Data Management Unscheduled Downtime
- DMS-REQ-0176 Base Facility Infrastructure
- DMS-REQ-0185 Archive Center
- DMS-REQ-0186 Archive Center Disaster Recovery
- DMS-REQ-0122 Access to catalogs for external Level 3 processing
- DMS-REQ-0123 Access to input catalogs for DAC-based Level 3 processing
- DMS-REQ-0126 Access to images for external Level 3 processing
- DMS-REQ-0127 Access to input images for DAC-based Level 3 processing
- DMS-REQ-0197 No Limit on Data Access Centers

DBB Lifetime Management

- DMS-REQ-0346 Data Availability
- DMS-REQ-0334 Persisting Data Products
- DMS-REQ-0338 Targeted Coads
- DMS-REQ-0339 Tracking Characterization Changes Between Data Releases
- DMS-REQ-0310 Un-Archived Data Product Cache

DBB Transport/Replication/Backup

- DMS-REQ-0344 Constraints on Level 1 Special Program Products Generation
- DMS-REQ-0089 Solar System Objects Available Within Specified Time
- DMS-REQ-0131 Calibration Images Available Within Specified Time
- DMS-REQ-0287 DIASource Precovery
- DMS-REQ-0102 Provide Engineering and Facility Database Archive
- DMS-REQ-0309 Raw Data Archiving Reliability
- DMS-REQ-0313 Level 1 and 2 Catalog Access
- DMS-REQ-0366 Subsets Support
- DMS-REQ-0370 Older Release Behavior
- DMS-REQ-0008 Pipeline Availability
- DMS-REQ-0161 Optimization of Cost, Reliability and Availability in Order
- DMS-REQ-0162 Pipeline Throughput
- DMS-REQ-0163 Re-processing Capacity

- DMS-REQ-0164 Temporary Storage for Communications Links
- DMS-REQ-0165 Infrastructure Sizing for "catching up"
- DMS-REQ-0166 Incorporate Fault-Tolerance
- DMS-REQ-0167 Incorporate Autonomics
- DMS-REQ-0314 Compute Platform Heterogeneity
- DMS-REQ-0318 Data Management Unscheduled Downtime
- DMS-REQ-0185 Archive Center
- DMS-REQ-0186 Archive Center Disaster Recovery
- DMS-REQ-0122 Access to catalogs for external Level 3 processing
- DMS-REQ-0123 Access to input catalogs for DAC-based Level 3 processing
- DMS-REQ-0126 Access to images for external Level 3 processing
- DMS-REQ-0127 Access to input images for DAC-based Level 3 processing
- DMS-REQ-0197 No Limit on Data Access Centers

DBB Storage

- DMS-REQ-0346 Data Availability
- DMS-REQ-0334 Persisting Data Products
- DMS-REQ-0338 Targeted Coadds
- DMS-REQ-0130 Calibration Data Products
- DMS-REQ-0344 Constraints on Level 1 Special Program Products Generation
- DMS-REQ-0089 Solar System Objects Available Within Specified Time
- DMS-REQ-0131 Calibration Images Available Within Specified Time
- DMS-REQ-0287 DIASource Precovery
- DMS-REQ-0077 Maintain Archive Publicly Accessible
- DMS-REQ-0094 Keep Historical Alert Archive
- DMS-REQ-0102 Provide Engineering and Facility Database Archive
- DMS-REQ-0309 Raw Data Archiving Reliability
- DMS-REQ-0310 Un-Archived Data Product Cache
- DMS-REQ-0313 Level 1 and 2 Catalog Access
- DMS-REQ-0363 Access to Previous Data Releases
- DMS-REQ-0364 Data Access Services
- DMS-REQ-0365 Operations Subsets
- DMS-REQ-0366 Subsets Support
- DMS-REQ-0367 Access Services Performance
- DMS-REQ-0368 Implementation Provisions
- DMS-REQ-0370 Older Release Behavior
- DMS-REQ-0008 Pipeline Availability
- DMS-REQ-0161 Optimization of Cost, Reliability and Availability in Order
- DMS-REQ-0162 Pipeline Throughput
- DMS-REQ-0163 Re-processing Capacity
- DMS-REQ-0164 Temporary Storage for Communications Links
- DMS-REQ-0165 Infrastructure Sizing for "catching up"
- DMS-REQ-0166 Incorporate Fault-Tolerance

- DMS-REQ-0167 Incorporate Autonomics
- DMS-REQ-0314 Compute Platform Heterogeneity
- DMS-REQ-0318 Data Management Unscheduled Downtime
- DMS-REQ-0185 Archive Center
- DMS-REQ-0186 Archive Center Disaster Recovery
- DMS-REQ-0122 Access to catalogs for external Level 3 processing
- DMS-REQ-0123 Access to input catalogs for DAC-based Level 3 processing
- DMS-REQ-0126 Access to images for external Level 3 processing
- DMS-REQ-0127 Access to input images for DAC-based Level 3 processing
- DMS-REQ-0197 No Limit on Data Access Centers

LSP Portal

- DMS-REQ-0119 DAC resource allocation for Level 3 processing
- DMS-REQ-0160 Provide User Interface Services
- DMS-REQ-0341 Providing a Precovery Service
- DMS-REQ-0363 Access to Previous Data Releases
- DMS-REQ-0364 Data Access Services
- DMS-REQ-0365 Operations Subsets
- DMS-REQ-0366 Subsets Support
- DMS-REQ-0367 Access Services Performance
- DMS-REQ-0368 Implementation Provisions
- DMS-REQ-0369 Evolution
- DMS-REQ-0370 Older Release Behavior
- DMS-REQ-0371 Query Availability
- DMS-REQ-0161 Optimization of Cost, Reliability and Availability in Order
- DMS-REQ-0314 Compute Platform Heterogeneity
- DMS-REQ-0318 Data Management Unscheduled Downtime
- DMS-REQ-0123 Access to input catalogs for DAC-based Level 3 processing
- DMS-REQ-0124 Federation with external catalogs
- DMS-REQ-0127 Access to input images for DAC-based Level 3 processing
- DMS-REQ-0193 Data Access Centers
- DMS-REQ-0194 Data Access Center Simultaneous Connections
- DMS-REQ-0197 No Limit on Data Access Centers

LSP JupyterLab

- DMS-REQ-0119 DAC resource allocation for Level 3 processing
- DMS-REQ-0161 Optimization of Cost, Reliability and Availability in Order
- DMS-REQ-0314 Compute Platform Heterogeneity
- DMS-REQ-0318 Data Management Unscheduled Downtime
- DMS-REQ-0123 Access to input catalogs for DAC-based Level 3 processing
- DMS-REQ-0124 Federation with external catalogs

- DMS-REQ-0127 Access to input images for DAC-based Level 3 processing
- DMS-REQ-0193 Data Access Centers
- DMS-REQ-0194 Data Access Center Simultaneous Connections
- DMS-REQ-0197 No Limit on Data Access Centers

LSP Web API

- DMS-REQ-0331 Computing Derived Quantities
- DMS-REQ-0332 Denormalizing Database Tables
- DMS-REQ-0346 Data Availability
- DMS-REQ-0347 Measurements in catalogs
- DMS-REQ-0323 Calculating SSOBJECT Parameters
- DMS-REQ-0324 Matching DIASources to Objects
- DMS-REQ-0334 Persisting Data Products
- DMS-REQ-0338 Targeted Coadds
- DMS-REQ-0339 Tracking Characterization Changes Between Data Releases
- DMS-REQ-0322 Special Programs Database
- DMS-REQ-0344 Constraints on Level 1 Special Program Products Generation
- DMS-REQ-0291 Query Repeatability
- DMS-REQ-0292 Uniqueness of IDs Across Data Releases
- DMS-REQ-0293 Selection of Datasets
- DMS-REQ-0295 Transparent Data Access
- DMS-REQ-0089 Solar System Objects Available Within Specified Time
- DMS-REQ-0287 DIASource Precovery
- DMS-REQ-0119 DAC resource allocation for Level 3 processing
- DMS-REQ-0120 Level 3 Data Product Self Consistency
- DMS-REQ-0121 Provenance for Level 3 processing at DACs
- DMS-REQ-0290 Level 3 Data Import
- DMS-REQ-0065 Provide Image Access Services
- DMS-REQ-0155 Provide Data Access Services
- DMS-REQ-0298 Data Product and Raw Data Access
- DMS-REQ-0075 Catalog Queries
- DMS-REQ-0078 Catalog Export Formats
- DMS-REQ-0311 Regenerate Un-archived Data Products
- DMS-REQ-0312 Level 1 Data Product Access
- DMS-REQ-0313 Level 1 and 2 Catalog Access
- DMS-REQ-0336b Regenerating Data Products from Previous Data Releases
- DMS-REQ-0345 Logging of catalog queries
- DMS-REQ-0363 Access to Previous Data Releases
- DMS-REQ-0364 Data Access Services
- DMS-REQ-0365 Operations Subsets
- DMS-REQ-0366 Subsets Support
- DMS-REQ-0367 Access Services Performance
- DMS-REQ-0368 Implementation Provisions

- DMS-REQ-0369 Evolution
- DMS-REQ-0370 Older Release Behavior
- DMS-REQ-0371 Query Availability
- DMS-REQ-0161 Optimization of Cost, Reliability and Availability in Order
- DMS-REQ-0314 Compute Platform Heterogeneity
- DMS-REQ-0318 Data Management Unscheduled Downtime
- DMS-REQ-0123 Access to input catalogs for DAC-based Level 3 processing
- DMS-REQ-0124 Federation with external catalogs
- DMS-REQ-0127 Access to input images for DAC-based Level 3 processing
- DMS-REQ-0193 Data Access Centers
- DMS-REQ-0194 Data Access Center Simultaneous Connections
- DMS-REQ-0197 No Limit on Data Access Centers
- EP-DM-CON-ICD-0013 Visualization Image Metadata Standard
- EP-DM-CON-ICD-0034 Citizen Science Data

Alert Distribution SW

- DMS-REQ-0004 Nightly Data Accessible Within 24 hrs
- DMS-REQ-0002 Transient Alert Distribution
- DMS-REQ-0342 Alert Filtering Service
- DMS-REQ-0343 Performance Requirements for LSST Alert Filtering Service
- DMS-REQ-0348 Pre-defined alert filters
- DMS-REQ-0008 Pipeline Availability
- DMS-REQ-0161 Optimization of Cost, Reliability and Availability in Order
- DMS-REQ-0162 Pipeline Throughput
- DMS-REQ-0167 Incorporate Autonomics
- DMS-REQ-0314 Compute Platform Heterogeneity
- DMS-REQ-0318 Data Management Unscheduled Downtime

EFD Transformation

- DMS-REQ-0346 Data Availability
- DMS-REQ-0004 Nightly Data Accessible Within 24 hrs
- DMS-REQ-0102 Provide Engineering and Facility Database Archive
- DMS-REQ-0309 Raw Data Archiving Reliability
- DMS-REQ-0008 Pipeline Availability
- DMS-REQ-0165 Infrastructure Sizing for "catching up"
- DMS-REQ-0167 Incorporate Autonomics
- DMS-REQ-0314 Compute Platform Heterogeneity
- DMS-REQ-0318 Data Management Unscheduled Downtime
- DMS-REQ-0315 DMS Communication with OCS
- OCS-DM-COM-ICD-0009 Command Set Implementation by Data Management
- OCS-DM-COM-ICD-0010 Response to Immediate Commands

- OCS-DM-COM-ICD-0003 Data Management Device Command Response Model
- OCS-DM-COM-ICD-0004 Data Management Exposed Devices
- OCS-DM-COM-ICD-0008 EFD Replicator Device
- OCS-DM-COM-ICD-0011 Generic Data Management Command Set Definition
- OCS-DM-COM-ICD-0012 configure Command
- OCS-DM-COM-ICD-0013 configure Successful Completion Response
- OCS-DM-COM-ICD-0014 enable Command
- OCS-DM-COM-ICD-0015 disable Command
- OCS-DM-COM-ICD-0025 Expected Load of Queries from DM
- OCS-DM-COM-ICD-0026 Engineering and Facilities Database Archiving by Data Management
- OCS-DM-COM-ICD-0027 Multiple Physically Separated Copies
- OCS-DM-COM-ICD-0028 Expected Data Volume
- OCS-DM-COM-ICD-0029 Archive Latency
- OCS-DM-COM-ICD-0030 Replication Interface

Header Service SW

- DMS-REQ-0266 Exposure Catalog
- OCS-DM-COM-ICD-0009 Command Set Implementation by Data Management
- OCS-DM-COM-ICD-0010 Response to Immediate Commands
- OCS-DM-COM-ICD-0003 Data Management Device Command Response Model
- OCS-DM-COM-ICD-0011 Generic Data Management Command Set Definition
- OCS-DM-COM-ICD-0012 configure Command
- OCS-DM-COM-ICD-0013 configure Successful Completion Response
- OCS-DM-COM-ICD-0014 enable Command
- OCS-DM-COM-ICD-0015 disable Command

Image Ingest and Processing

- DMS-REQ-0346 Data Availability
- DMS-REQ-0018 Raw Science Image Data Acquisition
- DMS-REQ-0020 Wavefront Sensor Data Acquisition
- DMS-REQ-0022 Crosstalk Corrected Science Image Data Acquisition
- DMS-REQ-0024 Raw Image Assembly
- DMS-REQ-0068 Raw Science Image Metadata
- DMS-REQ-0265 Guider Calibration Data Acquisition
- DMS-REQ-0004 Nightly Data Accessible Within 24 hrs
- DMS-REQ-0099 Level 1 Performance Report Definition
- DMS-REQ-0321 Level 1 Processing of Special Programs Data
- DMS-REQ-0344 Constraints on Level 1 Special Program Products Generation
- DMS-REQ-0294 Processing of Datasets
- DMS-REQ-0131 Calibration Images Available Within Specified Time
- DMS-REQ-0284 Level-1 Production Completeness

- DMS-REQ-0301 Control of Level-1 Production
- DMS-REQ-0309 Raw Data Archiving Reliability
- DMS-REQ-0008 Pipeline Availability
- DMS-REQ-0165 Infrastructure Sizing for "catching up"
- DMS-REQ-0167 Incorporate Autonomics
- DMS-REQ-0314 Compute Platform Heterogeneity
- DMS-REQ-0318 Data Management Unscheduled Downtime
- DMS-REQ-0315 DMS Communication with OCS
- CA-DM-CON-ICD-0014 Provide science sensor data
- CA-DM-CON-ICD-0015 Provide wavefront sensor data
- CA-DM-CON-ICD-0016 Provide guide sensor data
- CA-DM-CON-ICD-0017 Data Management load on image data interfaces
- CA-DM-CON-ICD-0019 Camera engineering image data archiving
- OCS-DM-COM-ICD-0009 Command Set Implementation by Data Management
- OCS-DM-COM-ICD-0010 Response to Immediate Commands
- OCS-DM-COM-ICD-0003 Data Management Device Command Response Model
- OCS-DM-COM-ICD-0004 Data Management Exposed Devices
- OCS-DM-COM-ICD-0005 Main Camera Archiver Device
- OCS-DM-COM-ICD-0006 Catch-up Archiver Device
- OCS-DM-COM-ICD-0007 Prompt Processing Device
- OCS-DM-COM-ICD-0011 Generic Data Management Command Set Definition
- OCS-DM-COM-ICD-0012 configure Command
- OCS-DM-COM-ICD-0013 configure Successful Completion Response
- OCS-DM-COM-ICD-0014 enable Command
- OCS-DM-COM-ICD-0015 disable Command
- DM-TS-CON-ICD-0002 Timing
- DM-TS-CON-ICD-0007 Timing

Observatory Operations Data Service SW

- DMS-REQ-0346 Data Availability
- DMS-REQ-0167 Incorporate Autonomics
- DMS-REQ-0314 Compute Platform Heterogeneity
- DMS-REQ-0318 Data Management Unscheduled Downtime
- CA-DM-DAQ-ICD-0052 Correction constants for science sensors sourced by Data Management
- DM-TS-CON-ICD-0003 Wavefront image archive access

OCS Batch SW

- DMS-REQ-0265 Guider Calibration Data Acquisition
- DMS-REQ-0101 Level 1 Calibration Report Definition
- DMS-REQ-0294 Processing of Datasets
- DMS-REQ-0131 Calibration Images Available Within Specified Time

- DMS-REQ-0289 Calibration Production Processing
- DMS-REQ-0301 Control of Level-1 Production
- DMS-REQ-0008 Pipeline Availability
- DMS-REQ-0162 Pipeline Throughput
- DMS-REQ-0314 Compute Platform Heterogeneity
- DMS-REQ-0318 Data Management Unscheduled Downtime
- DMS-REQ-0315 DMS Communication with OCS
- OCS-DM-COM-ICD-0009 Command Set Implementation by Data Management
- OCS-DM-COM-ICD-0010 Response to Immediate Commands
- OCS-DM-COM-ICD-0003 Data Management Device Command Response Model
- OCS-DM-COM-ICD-0011 Generic Data Management Command Set Definition
- OCS-DM-COM-ICD-0012 configure Command
- OCS-DM-COM-ICD-0013 configure Successful Completion Response
- OCS-DM-COM-ICD-0014 enable Command
- OCS-DM-COM-ICD-0015 disable Command

Planned Observation Publication SW

- DMS-REQ-0353 Publishing predicted visit schedule

Campaign Management

- DMS-REQ-0294 Processing of Datasets
- DMS-REQ-0156 Provide Pipeline Execution Services
- DMS-REQ-0302 Production Orchestration
- DMS-REQ-0303 Production Monitoring
- DMS-REQ-0304 Production Fault Tolerance
- DMS-REQ-0008 Pipeline Availability
- DMS-REQ-0163 Re-processing Capacity
- DMS-REQ-0167 Incorporate Autonomics
- DMS-REQ-0314 Compute Platform Heterogeneity
- DMS-REQ-0318 Data Management Unscheduled Downtime

Workload/Workflow

- DMS-REQ-0294 Processing of Datasets
- DMS-REQ-0308 Software Architecture to Enable Community Re-Use
- DMS-REQ-0156 Provide Pipeline Execution Services
- DMS-REQ-0302 Production Orchestration
- DMS-REQ-0303 Production Monitoring
- DMS-REQ-0304 Production Fault Tolerance
- DMS-REQ-0008 Pipeline Availability
- DMS-REQ-0163 Re-processing Capacity

- DMS-REQ-0167 Incorporate Autonomics
- DMS-REQ-0314 Compute Platform Heterogeneity
- DMS-REQ-0318 Data Management Unscheduled Downtime

Quality Control SW

- DMS-REQ-0097 Level 1 Data Quality Report Definition
- DMS-REQ-0099 Level 1 Performance Report Definition
- DMS-REQ-0101 Level 1 Calibration Report Definition
- DMS-REQ-0096 Generate Data Quality Report Within Specified Time
- DMS-REQ-0098 Generate DMS Performance Report Within Specified Time
- DMS-REQ-0100 Generate Calibration Report Within Specified Time
- DMS-REQ-0314 Compute Platform Heterogeneity
- DMS-REQ-0318 Data Management Unscheduled Downtime

DBB Ingest/Metadata Management SW

- DMS-REQ-0346 Data Availability
- DMS-REQ-0068 Raw Science Image Metadata
- DMS-REQ-0074 Difference Exposure Attributes
- DMS-REQ-0266 Exposure Catalog
- DMS-REQ-0269 DIASource Catalog
- DMS-REQ-0271 DIAObject Catalog
- DMS-REQ-0273 SSOBJECT Catalog
- DMS-REQ-0317 DIAForcedSource Catalog
- DMS-REQ-0334 Persisting Data Products
- DMS-REQ-0338 Targeted Coadds
- DMS-REQ-0339 Tracking Characterization Changes Between Data Releases
- DMS-REQ-0130 Calibration Data Products
- DMS-REQ-0132 Calibration Image Provenance
- DMS-REQ-0322 Special Programs Database
- DMS-REQ-0291 Query Repeatability
- DMS-REQ-0292 Uniqueness of IDs Across Data Releases
- DMS-REQ-0293 Selection of Datasets
- DMS-REQ-0089 Solar System Objects Available Within Specified Time
- DMS-REQ-0131 Calibration Images Available Within Specified Time
- DMS-REQ-0287 DIASource Precoversy
- DMS-REQ-0120 Level 3 Data Product Self Consistency
- DMS-REQ-0299 Data Product Ingest
- DMS-REQ-0077 Maintain Archive Publicly Accessible
- DMS-REQ-0094 Keep Historical Alert Archive
- DMS-REQ-0102 Provide Engineering and Facility Database Archive
- DMS-REQ-0309 Raw Data Archiving Reliability

- DMS-REQ-0310 Un-Archived Data Product Cache
- DMS-REQ-0313 Level 1 and 2 Catalog Access
- DMS-REQ-0363 Access to Previous Data Releases
- DMS-REQ-0364 Data Access Services
- DMS-REQ-0365 Operations Subsets
- DMS-REQ-0366 Subsets Support
- DMS-REQ-0369 Evolution
- DMS-REQ-0370 Older Release Behavior
- DMS-REQ-0008 Pipeline Availability
- DMS-REQ-0161 Optimization of Cost, Reliability and Availability in Order
- DMS-REQ-0162 Pipeline Throughput
- DMS-REQ-0163 Re-processing Capacity
- DMS-REQ-0164 Temporary Storage for Communications Links
- DMS-REQ-0165 Infrastructure Sizing for "catching up"
- DMS-REQ-0166 Incorporate Fault-Tolerance
- DMS-REQ-0167 Incorporate Autonomics
- DMS-REQ-0314 Compute Platform Heterogeneity
- DMS-REQ-0318 Data Management Unscheduled Downtime
- DMS-REQ-0176 Base Facility Infrastructure
- DMS-REQ-0185 Archive Center
- DMS-REQ-0186 Archive Center Disaster Recovery
- DMS-REQ-0122 Access to catalogs for external Level 3 processing
- DMS-REQ-0123 Access to input catalogs for DAC-based Level 3 processing
- DMS-REQ-0126 Access to images for external Level 3 processing
- DMS-REQ-0127 Access to input images for DAC-based Level 3 processing
- DMS-REQ-0197 No Limit on Data Access Centers

DBB Lifetime Management SW

- DMS-REQ-0346 Data Availability
- DMS-REQ-0334 Persisting Data Products
- DMS-REQ-0338 Targeted Coads
- DMS-REQ-0339 Tracking Characterization Changes Between Data Releases
- DMS-REQ-0310 Un-Archived Data Product Cache

DBB Transport/Replication/Backup SW

- DMS-REQ-0344 Constraints on Level 1 Special Program Products Generation
- DMS-REQ-0089 Solar System Objects Available Within Specified Time
- DMS-REQ-0131 Calibration Images Available Within Specified Time
- DMS-REQ-0287 DIASource Precovery
- DMS-REQ-0102 Provide Engineering and Facility Database Archive
- DMS-REQ-0309 Raw Data Archiving Reliability

- DMS-REQ-0313 Level 1 and 2 Catalog Access
- DMS-REQ-0366 Subsets Support
- DMS-REQ-0370 Older Release Behavior
- DMS-REQ-0008 Pipeline Availability
- DMS-REQ-0161 Optimization of Cost, Reliability and Availability in Order
- DMS-REQ-0162 Pipeline Throughput
- DMS-REQ-0163 Re-processing Capacity
- DMS-REQ-0164 Temporary Storage for Communications Links
- DMS-REQ-0165 Infrastructure Sizing for "catching up"
- DMS-REQ-0166 Incorporate Fault-Tolerance
- DMS-REQ-0167 Incorporate Autonomics
- DMS-REQ-0314 Compute Platform Heterogeneity
- DMS-REQ-0318 Data Management Unscheduled Downtime
- DMS-REQ-0185 Archive Center
- DMS-REQ-0186 Archive Center Disaster Recovery
- DMS-REQ-0122 Access to catalogs for external Level 3 processing
- DMS-REQ-0123 Access to input catalogs for DAC-based Level 3 processing
- DMS-REQ-0126 Access to images for external Level 3 processing
- DMS-REQ-0127 Access to input images for DAC-based Level 3 processing
- DMS-REQ-0197 No Limit on Data Access Centers

LSP Portal and SUIT

- DMS-REQ-0119 DAC resource allocation for Level 3 processing
- DMS-REQ-0160 Provide User Interface Services
- DMS-REQ-0341 Providing a Precovery Service
- DMS-REQ-0363 Access to Previous Data Releases
- DMS-REQ-0364 Data Access Services
- DMS-REQ-0365 Operations Subsets
- DMS-REQ-0366 Subsets Support
- DMS-REQ-0367 Access Services Performance
- DMS-REQ-0368 Implementation Provisions
- DMS-REQ-0369 Evolution
- DMS-REQ-0370 Older Release Behavior
- DMS-REQ-0371 Query Availability
- DMS-REQ-0161 Optimization of Cost, Reliability and Availability in Order
- DMS-REQ-0314 Compute Platform Heterogeneity
- DMS-REQ-0318 Data Management Unscheduled Downtime
- DMS-REQ-0123 Access to input catalogs for DAC-based Level 3 processing
- DMS-REQ-0124 Federation with external catalogs
- DMS-REQ-0127 Access to input images for DAC-based Level 3 processing
- DMS-REQ-0193 Data Access Centers
- DMS-REQ-0194 Data Access Center Simultaneous Connections
- DMS-REQ-0197 No Limit on Data Access Centers

LSP JupyterLab SW

- DMS-REQ-0119 DAC resource allocation for Level 3 processing
- DMS-REQ-0161 Optimization of Cost, Reliability and Availability in Order
- DMS-REQ-0314 Compute Platform Heterogeneity
- DMS-REQ-0318 Data Management Unscheduled Downtime
- DMS-REQ-0123 Access to input catalogs for DAC-based Level 3 processing
- DMS-REQ-0124 Federation with external catalogs
- DMS-REQ-0127 Access to input images for DAC-based Level 3 processing
- DMS-REQ-0193 Data Access Centers
- DMS-REQ-0194 Data Access Center Simultaneous Connections
- DMS-REQ-0197 No Limit on Data Access Centers

LSP Web API SW

- DMS-REQ-0331 Computing Derived Quantities
- DMS-REQ-0332 Denormalizing Database Tables
- DMS-REQ-0346 Data Availability
- DMS-REQ-0347 Measurements in catalogs
- DMS-REQ-0323 Calculating SSOBJECT Parameters
- DMS-REQ-0324 Matching DIASources to Objects
- DMS-REQ-0334 Persisting Data Products
- DMS-REQ-0338 Targeted Coads
- DMS-REQ-0339 Tracking Characterization Changes Between Data Releases
- DMS-REQ-0322 Special Programs Database
- DMS-REQ-0344 Constraints on Level 1 Special Program Products Generation
- DMS-REQ-0291 Query Repeatability
- DMS-REQ-0292 Uniqueness of IDs Across Data Releases
- DMS-REQ-0293 Selection of Datasets
- DMS-REQ-0295 Transparent Data Access
- DMS-REQ-0089 Solar System Objects Available Within Specified Time
- DMS-REQ-0287 DIASource Precovery
- DMS-REQ-0119 DAC resource allocation for Level 3 processing
- DMS-REQ-0120 Level 3 Data Product Self Consistency
- DMS-REQ-0121 Provenance for Level 3 processing at DACs
- DMS-REQ-0290 Level 3 Data Import
- DMS-REQ-0065 Provide Image Access Services
- DMS-REQ-0155 Provide Data Access Services
- DMS-REQ-0298 Data Product and Raw Data Access
- DMS-REQ-0299 Data Product Ingest
- DMS-REQ-0075 Catalog Queries
- DMS-REQ-0078 Catalog Export Formats
- DMS-REQ-0311 Regenerate Un-archived Data Products
- DMS-REQ-0312 Level 1 Data Product Access

- DMS-REQ-0313 Level 1 and 2 Catalog Access
- DMS-REQ-0336b Regenerating Data Products from Previous Data Releases
- DMS-REQ-0345 Logging of catalog queries
- DMS-REQ-0363 Access to Previous Data Releases
- DMS-REQ-0364 Data Access Services
- DMS-REQ-0365 Operations Subsets
- DMS-REQ-0366 Subsets Support
- DMS-REQ-0367 Access Services Performance
- DMS-REQ-0368 Implementation Provisions
- DMS-REQ-0369 Evolution
- DMS-REQ-0370 Older Release Behavior
- DMS-REQ-0371 Query Availability
- DMS-REQ-0161 Optimization of Cost, Reliability and Availability in Order
- DMS-REQ-0314 Compute Platform Heterogeneity
- DMS-REQ-0318 Data Management Unscheduled Downtime
- DMS-REQ-0123 Access to input catalogs for DAC-based Level 3 processing
- DMS-REQ-0124 Federation with external catalogs
- DMS-REQ-0127 Access to input images for DAC-based Level 3 processing
- DMS-REQ-0193 Data Access Centers
- DMS-REQ-0194 Data Access Center Simultaneous Connections
- DMS-REQ-0197 No Limit on Data Access Centers
- EP-DM-CON-ICD-0013 Visualization Image Metadata Standard
- EP-DM-CON-ICD-0034 Citizen Science Data

Alert Production

- DMS-REQ-0333 Maximum Likelihood Values and Covariances
- DMS-REQ-0347 Measurements in catalogs
- DMS-REQ-0004 Nightly Data Accessible Within 24 hrs
- DMS-REQ-0010 Difference Exposures
- DMS-REQ-0074 Difference Exposure Attributes
- DMS-REQ-0069 Processed Visit Images
- DMS-REQ-0029 Generate Photometric Zeropoint for Visit Image
- DMS-REQ-0030 Generate WCS for Visit Images
- DMS-REQ-0070 Generate PSF for Visit Images
- DMS-REQ-0072 Processed Visit Image Content
- DMS-REQ-0327 Background Model Calculation
- DMS-REQ-0328 Documenting Image Characterization
- DMS-REQ-0097 Level 1 Data Quality Report Definition
- DMS-REQ-0266 Exposure Catalog
- DMS-REQ-0269 DIASource Catalog
- DMS-REQ-0270 Faint DIASource Measurements
- DMS-REQ-0271 DIAObject Catalog
- DMS-REQ-0272 DIAObject Attributes

- DMS-REQ-0274 Alert Content
- DMS-REQ-0317 DIAForcedSource Catalog
- DMS-REQ-0319 Characterizing Variability
- DMS-REQ-0324 Matching DIASources to Objects
- DMS-REQ-0321 Level 1 Processing of Special Programs Data
- DMS-REQ-0344 Constraints on Level 1 Special Program Products Generation
- DMS-REQ-0002 Transient Alert Distribution
- DMS-REQ-0285 Level 1 Source Association
- DMS-REQ-0288 Use of External Orbit Catalogs
- DMS-REQ-0308 Software Architecture to Enable Community Re-Use
- DMS-REQ-0009 Simulated Data
- DMS-REQ-0032 Image Differencing
- DMS-REQ-0033 Provide Source Detection Software
- DMS-REQ-0042 Provide Astrometric Model
- DMS-REQ-0043 Provide Calibrated Photometry
- DMS-REQ-0052 Enable a Range of Shape Measurement Approaches
- DMS-REQ-0312 Level 1 Data Product Access
- EP-DM-CON-ICD-0013 Visualization Image Metadata Standard
- EP-DM-CON-ICD-0023 Nightly DM Transfer of Processed Visit Images (PVI)-Based Images to EPO

MOPS and Forced Photometry

- DMS-REQ-0004 Nightly Data Accessible Within 24 hrs
- DMS-REQ-0273 SSOBJECT Catalog
- DMS-REQ-0317 DIAForcedSource Catalog
- DMS-REQ-0319 Characterizing Variability
- DMS-REQ-0321 Level 1 Processing of Special Programs Data
- DMS-REQ-0344 Constraints on Level 1 Special Program Products Generation
- DMS-REQ-0089 Solar System Objects Available Within Specified Time
- DMS-REQ-0286 SSOBJECT Preccovery
- DMS-REQ-0287 DIASource Preccovery
- DMS-REQ-0288 Use of External Orbit Catalogs
- DMS-REQ-0308 Software Architecture to Enable Community Re-Use
- DMS-REQ-0341 Providing a Preccovery Service

Raw Calibration Validation

- DMS-REQ-0265 Guider Calibration Data Acquisition
- DMS-REQ-0101 Level 1 Calibration Report Definition
- DMS-REQ-0131 Calibration Images Available Within Specified Time
- DMS-REQ-0308 Software Architecture to Enable Community Re-Use

Daily Calibration Update

- DMS-REQ-0265 Guider Calibration Data Acquisition
- DMS-REQ-0101 Level 1 Calibration Report Definition
- DMS-REQ-0059 Bad Pixel Map
- DMS-REQ-0060 Bias Residual Image
- DMS-REQ-0061 Crosstalk Correction Matrix
- DMS-REQ-0062 Illumination Correction Frame
- DMS-REQ-0063 Monochromatic Flatfield Data Cube
- DMS-REQ-0130 Calibration Data Products
- DMS-REQ-0132 Calibration Image Provenance
- DMS-REQ-0282 Dark Current Correction Frame
- DMS-REQ-0283 Fringe Correction Frame
- DMS-REQ-0100 Generate Calibration Report Within Specified Time
- DMS-REQ-0131 Calibration Images Available Within Specified Time
- DMS-REQ-0289 Calibration Production Processing
- DMS-REQ-0308 Software Architecture to Enable Community Re-Use

Periodic Calibration

- DMS-REQ-0265 Guider Calibration Data Acquisition
- DMS-REQ-0059 Bad Pixel Map
- DMS-REQ-0060 Bias Residual Image
- DMS-REQ-0061 Crosstalk Correction Matrix
- DMS-REQ-0062 Illumination Correction Frame
- DMS-REQ-0063 Monochromatic Flatfield Data Cube
- DMS-REQ-0130 Calibration Data Products
- DMS-REQ-0132 Calibration Image Provenance
- DMS-REQ-0282 Dark Current Correction Frame
- DMS-REQ-0283 Fringe Correction Frame
- DMS-REQ-0289 Calibration Production Processing
- DMS-REQ-0308 Software Architecture to Enable Community Re-Use
- CA-DM-DAQ-ICD-0052 Correction constants for science sensors sourced by Data Management

Special Programs Productions

- DMS-REQ-0320 Processing of Data From Special Programs
- DMS-REQ-0322 Special Programs Database

Template Generation

- DMS-REQ-0280 Template Coadds
- DMS-REQ-0308 Software Architecture to Enable Community Re-Use

Annual Calibration

- DMS-REQ-0265 Guider Calibration Data Acquisition
- DMS-REQ-0059 Bad Pixel Map
- DMS-REQ-0060 Bias Residual Image
- DMS-REQ-0061 Crosstalk Correction Matrix
- DMS-REQ-0062 Illumination Correction Frame
- DMS-REQ-0063 Monochromatic Flatfield Data Cube
- DMS-REQ-0130 Calibration Data Products
- DMS-REQ-0132 Calibration Image Provenance
- DMS-REQ-0282 Dark Current Correction Frame
- DMS-REQ-0283 Fringe Correction Frame
- DMS-REQ-0289 Calibration Production Processing
- DMS-REQ-0308 Software Architecture to Enable Community Re-Use

Data Release Production

- DMS-REQ-0326 Storing Approximations of Per-pixel Metadata
- DMS-REQ-0331 Computing Derived Quantities
- DMS-REQ-0333 Maximum Likelihood Values and Covariances
- DMS-REQ-0347 Measurements in catalogs
- DMS-REQ-0325 Regenerating L1 Data Products During Data Release Processing
- DMS-REQ-0034 Associate Sources to Objects
- DMS-REQ-0047 Provide PSF for Coadded Images
- DMS-REQ-0103 Produce Images for EPO
- DMS-REQ-0106 Coadded Image Provenance
- DMS-REQ-0267 Source Catalog
- DMS-REQ-0268 Forced-Source Catalog
- DMS-REQ-0275 Object Catalog
- DMS-REQ-0046 Provide Photometric Redshifts of Galaxies
- DMS-REQ-0276 Object Characterization
- DMS-REQ-0277 Coadd Source Catalog
- DMS-REQ-0349 Detecting extended low surface brightness objects
- DMS-REQ-0278 Coadd Image Method Constraints
- DMS-REQ-0279 Deep Detection Coadds
- DMS-REQ-0280 Template Coadds
- DMS-REQ-0281 Multi-band Coadds
- DMS-REQ-0329 All-Sky Visualization of Data Releases
- DMS-REQ-0330 Best Seeing Coadds
- DMS-REQ-0335 PSF-Matched Coadds
- DMS-REQ-0337 Detecting faint variable objects
- DMS-REQ-0320 Processing of Data From Special Programs
- DMS-REQ-0350 Associating Objects across data releases
- DMS-REQ-0308 Software Architecture to Enable Community Re-Use
- DMS-REQ-0009 Simulated Data
- DMS-REQ-0032 Image Differencing

- DMS-REQ-0033 Provide Source Detection Software
- DMS-REQ-0042 Provide Astrometric Model
- DMS-REQ-0043 Provide Calibrated Photometry
- DMS-REQ-0052 Enable a Range of Shape Measurement Approaches
- EP-DM-CON-ICD-0013 Visualization Image Metadata Standard
- EP-DM-CON-ICD-0014 Color Co-Add Image Format

Science Pipelines Libraries

- DMS-REQ-0308 Software Architecture to Enable Community Re-Use
- DMS-REQ-0032 Image Differencing
- DMS-REQ-0033 Provide Source Detection Software
- DMS-REQ-0042 Provide Astrometric Model
- DMS-REQ-0043 Provide Calibrated Photometry
- DMS-REQ-0052 Enable a Range of Shape Measurement Approaches
- DMS-REQ-0296 Pre-cursor, and Real Data
- DMS-REQ-0351 Provide Beam Projector Coordinate Calculation Software
- DM-TS-CON-ICD-0008 LSST Stack Availability

Data Butler

- DMS-REQ-0293 Selection of Datasets
- DMS-REQ-0295 Transparent Data Access
- DMS-REQ-0121 Provenance for Level 3 processing at DACs
- DMS-REQ-0125 Software framework for Level 3 catalog processing
- DMS-REQ-0128 Software framework for Level 3 image processing
- DMS-REQ-0308 Software Architecture to Enable Community Re-Use
- DMS-REQ-0296 Pre-cursor, and Real Data
- DMS-REQ-0314 Compute Platform Heterogeneity

Task Framework

- DMS-REQ-0320 Processing of Data From Special Programs
- DMS-REQ-0294 Processing of Datasets
- DMS-REQ-0121 Provenance for Level 3 processing at DACs
- DMS-REQ-0125 Software framework for Level 3 catalog processing
- DMS-REQ-0128 Software framework for Level 3 image processing
- DMS-REQ-0308 Software Architecture to Enable Community Re-Use
- DMS-REQ-0304 Production Fault Tolerance
- DMS-REQ-0158 Provide Pipeline Construction Services
- DMS-REQ-0305 Task Specification
- DMS-REQ-0306 Task Configuration
- DMS-REQ-0314 Compute Platform Heterogeneity

Distributed Database

- DMS-REQ-0331 Computing Derived Quantities
- DMS-REQ-0332 Denormalizing Database Tables
- DMS-REQ-0333 Maximum Likelihood Values and Covariances
- DMS-REQ-0347 Measurements in catalogs
- DMS-REQ-0267 Source Catalog
- DMS-REQ-0268 Forced-Source Catalog
- DMS-REQ-0275 Object Catalog
- DMS-REQ-0046 Provide Photometric Redshifts of Galaxies
- DMS-REQ-0276 Object Characterization
- DMS-REQ-0277 Coadd Source Catalog
- DMS-REQ-0322 Special Programs Database
- DMS-REQ-0291 Query Repeatability
- DMS-REQ-0292 Uniqueness of IDs Across Data Releases
- DMS-REQ-0293 Selection of Datasets
- DMS-REQ-0350 Associating Objects across data releases
- DMS-REQ-0290 Level 3 Data Import
- DMS-REQ-0340 Access Controls of Level 3 Data Products
- DMS-REQ-0075 Catalog Queries
- DMS-REQ-0077 Maintain Archive Publicly Accessible
- DMS-REQ-0313 Level 1 and 2 Catalog Access
- DMS-REQ-0345 Logging of catalog queries
- DMS-REQ-0363 Access to Previous Data Releases
- DMS-REQ-0365 Operations Subsets
- DMS-REQ-0366 Subsets Support
- DMS-REQ-0367 Access Services Performance
- DMS-REQ-0368 Implementation Provisions
- DMS-REQ-0369 Evolution
- DMS-REQ-0370 Older Release Behavior
- DMS-REQ-0371 Query Availability

ADQL Translator

- DMS-REQ-0331 Computing Derived Quantities
- DMS-REQ-0323 Calculating SObject Parameters
- DMS-REQ-0322 Special Programs Database
- DMS-REQ-0291 Query Repeatability
- DMS-REQ-0340 Access Controls of Level 3 Data Products
- DMS-REQ-0155 Provide Data Access Services
- DMS-REQ-0298 Data Product and Raw Data Access
- DMS-REQ-0075 Catalog Queries
- DMS-REQ-0078 Catalog Export Formats
- DMS-REQ-0345 Logging of catalog queries

- DMS-REQ-0364 Data Access Services
- DMS-REQ-0368 Implementation Provisions
- DMS-REQ-0369 Evolution
- DMS-REQ-0123 Access to input catalogs for DAC-based Level 3 processing
- EP-DM-CON-ICD-0034 Citizen Science Data

Firefly

- DMS-REQ-0160 Provide User Interface Services

Image/Cutout Server

- DMS-REQ-0346 Data Availability
- DMS-REQ-0334 Persisting Data Products
- DMS-REQ-0338 Targeted Coadds
- DMS-REQ-0339 Tracking Characterization Changes Between Data Releases
- DMS-REQ-0293 Selection of Datasets
- DMS-REQ-0065 Provide Image Access Services
- DMS-REQ-0155 Provide Data Access Services
- DMS-REQ-0298 Data Product and Raw Data Access
- DMS-REQ-0311 Regenerate Un-archived Data Products
- DMS-REQ-0336b Regenerating Data Products from Previous Data Releases
- DMS-REQ-0368 Implementation Provisions
- DMS-REQ-0127 Access to input images for DAC-based Level 3 processing
- EP-DM-CON-ICD-0013 Visualization Image Metadata Standard
- EP-DM-CON-ICD-0034 Citizen Science Data

Summit to Base Network

- DMS-REQ-0165 Infrastructure Sizing for "catching up"
- DMS-REQ-0166 Incorporate Fault-Tolerance
- DMS-REQ-0167 Incorporate Autonomics
- DMS-REQ-0168 Summit Facility Data Communications
- DMS-REQ-0171 Summit to Base Network
- DMS-REQ-0172 Summit to Base Network Availability
- DMS-REQ-0173 Summit to Base Network Reliability
- DMS-REQ-0174 Summit to Base Network Secondary Link
- DMS-REQ-0175 Summit to Base Network Ownership and Operation

Base to Archive Network

- DMS-REQ-0165 Infrastructure Sizing for "catching up"

- DMS-REQ-0166 Incorporate Fault-Tolerance
- DMS-REQ-0167 Incorporate Autonomics
- DMS-REQ-0180 Base to Archive Network
- DMS-REQ-0181 Base to Archive Network Availability
- DMS-REQ-0182 Base to Archive Network Reliability
- DMS-REQ-0183 Base to Archive Network Secondary Link
- DMS-REQ-0188 Archive to Data Access Center Network
- DMS-REQ-0189 Archive to Data Access Center Network Availability
- DMS-REQ-0190 Archive to Data Access Center Network Reliability
- DMS-REQ-0191 Archive to Data Access Center Network Secondary Link

Base LAN Network

- DMS-REQ-0165 Infrastructure Sizing for "catching up"
- DMS-REQ-0166 Incorporate Fault-Tolerance
- DMS-REQ-0167 Incorporate Autonomics
- DMS-REQ-0352 Base Wireless LAN (WiFi)
- DMS-REQ-0193 Data Access Centers
- DMS-REQ-0194 Data Access Center Simultaneous Connections

NCSA LAN Network

- DMS-REQ-0163 Re-processing Capacity
- DMS-REQ-0165 Infrastructure Sizing for "catching up"
- DMS-REQ-0166 Incorporate Fault-Tolerance
- DMS-REQ-0167 Incorporate Autonomics
- DMS-REQ-0188 Archive to Data Access Center Network
- DMS-REQ-0189 Archive to Data Access Center Network Availability
- DMS-REQ-0190 Archive to Data Access Center Network Reliability
- DMS-REQ-0191 Archive to Data Access Center Network Secondary Link
- DMS-REQ-0193 Data Access Centers
- DMS-REQ-0194 Data Access Center Simultaneous Connections

Network Management

- DMS-REQ-0008 Pipeline Availability
- DMS-REQ-0166 Incorporate Fault-Tolerance
- DMS-REQ-0167 Incorporate Autonomics
- DMS-REQ-0175 Summit to Base Network Ownership and Operation

Base Facility

- DMS-REQ-0297 DMS Initialization Component
- DMS-REQ-0008 Pipeline Availability
- DMS-REQ-0161 Optimization of Cost, Reliability and Availability in Order
- DMS-REQ-0162 Pipeline Throughput
- DMS-REQ-0163 Re-processing Capacity
- DMS-REQ-0164 Temporary Storage for Communications Links
- DMS-REQ-0165 Infrastructure Sizing for "catching up"
- DMS-REQ-0166 Incorporate Fault-Tolerance
- DMS-REQ-0167 Incorporate Autonomics
- DMS-REQ-0314 Compute Platform Heterogeneity
- DMS-REQ-0318 Data Management Unscheduled Downtime
- DMS-REQ-0170 Prefer Computing and Storage Down
- DMS-REQ-0315 DMS Communication with OCS
- DMS-REQ-0176 Base Facility Infrastructure
- DMS-REQ-0178 Base Facility Co-Location with Existing Facility
- DMS-REQ-0316 Commissioning Cluster
- DMS-REQ-0352 Base Wireless LAN (WiFi)
- DMS-REQ-0193 Data Access Centers
- DMS-REQ-0196 Data Access Center Geographical Distribution
- OCS-DM-COM-ICD-0027 Multiple Physically Separated Copies
- DM-TS-CON-ICD-0003 Wavefront image archive access

NCSA Facility

- DMS-REQ-0297 DMS Initialization Component
- DMS-REQ-0008 Pipeline Availability
- DMS-REQ-0161 Optimization of Cost, Reliability and Availability in Order
- DMS-REQ-0162 Pipeline Throughput
- DMS-REQ-0163 Re-processing Capacity
- DMS-REQ-0164 Temporary Storage for Communications Links
- DMS-REQ-0165 Infrastructure Sizing for "catching up"
- DMS-REQ-0166 Incorporate Fault-Tolerance
- DMS-REQ-0167 Incorporate Autonomics
- DMS-REQ-0314 Compute Platform Heterogeneity
- DMS-REQ-0318 Data Management Unscheduled Downtime
- DMS-REQ-0170 Prefer Computing and Storage Down
- DMS-REQ-0185 Archive Center
- DMS-REQ-0186 Archive Center Disaster Recovery
- DMS-REQ-0187 Archive Center Co-Location with Existing Facility
- DMS-REQ-0193 Data Access Centers
- DMS-REQ-0196 Data Access Center Geographical Distribution
- OCS-DM-COM-ICD-0027 Multiple Physically Separated Copies
- DM-TS-CON-ICD-0003 Wavefront image archive access
- EP-DM-CON-ICD-0001 US DAC Provides EPO Interface

Archive Base Enclave

- DMS-REQ-0004 Nightly Data Accessible Within 24 hrs
- DMS-REQ-0010 Difference Exposures
- DMS-REQ-0069 Processed Visit Images
- DMS-REQ-0029 Generate Photometric Zeropoint for Visit Image
- DMS-REQ-0030 Generate WCS for Visit Images
- DMS-REQ-0327 Background Model Calculation
- DMS-REQ-0266 Exposure Catalog
- DMS-REQ-0269 DIASource Catalog
- DMS-REQ-0270 Faint DIASource Measurements
- DMS-REQ-0271 DIAObject Catalog
- DMS-REQ-0272 DIAObject Attributes
- DMS-REQ-0273 SSOObject Catalog
- DMS-REQ-0274 Alert Content
- DMS-REQ-0317 DIAForcedSource Catalog
- DMS-REQ-0324 Matching DIASources to Objects
- DMS-REQ-0106 Coadded Image Provenance
- DMS-REQ-0267 Source Catalog
- DMS-REQ-0268 Forced-Source Catalog
- DMS-REQ-0275 Object Catalog
- DMS-REQ-0334 Persisting Data Products
- DMS-REQ-0338 Targeted Coadds
- DMS-REQ-0322 Special Programs Database
- DMS-REQ-0344 Constraints on Level 1 Special Program Products Generation
- DMS-REQ-0291 Query Repeatability
- DMS-REQ-0089 Solar System Objects Available Within Specified Time
- DMS-REQ-0131 Calibration Images Available Within Specified Time
- DMS-REQ-0284 Level-1 Production Completeness
- DMS-REQ-0287 DIASource Precovery
- DMS-REQ-0077 Maintain Archive Publicly Accessible
- DMS-REQ-0078 Catalog Export Formats
- DMS-REQ-0094 Keep Historical Alert Archive
- DMS-REQ-0102 Provide Engineering and Facility Database Archive
- DMS-REQ-0309 Raw Data Archiving Reliability
- DMS-REQ-0310 Un-Archived Data Product Cache
- DMS-REQ-0312 Level 1 Data Product Access
- DMS-REQ-0363 Access to Previous Data Releases
- DMS-REQ-0364 Data Access Services
- DMS-REQ-0365 Operations Subsets
- DMS-REQ-0366 Subsets Support
- DMS-REQ-0367 Access Services Performance
- DMS-REQ-0368 Implementation Provisions
- DMS-REQ-0369 Evolution

- DMS-REQ-0370 Older Release Behavior
- DMS-REQ-0161 Optimization of Cost, Reliability and Availability in Order
- DMS-REQ-0162 Pipeline Throughput
- DMS-REQ-0163 Re-processing Capacity
- DMS-REQ-0166 Incorporate Fault-Tolerance
- DMS-REQ-0167 Incorporate Autonomics
- DMS-REQ-0314 Compute Platform Heterogeneity
- DMS-REQ-0318 Data Management Unscheduled Downtime
- DMS-REQ-0176 Base Facility Infrastructure
- DMS-REQ-0186 Archive Center Disaster Recovery
- CA-DM-CON-ICD-0019 Camera engineering image data archiving
- OCS-DM-COM-ICD-0027 Multiple Physically Separated Copies
- OCS-DM-COM-ICD-0028 Expected Data Volume
- OCS-DM-COM-ICD-0029 Archive Latency
- OCS-DM-COM-ICD-0030 Replication Interface
- DM-TS-CON-ICD-0003 Wavefront image archive access

Archive NCSA Enclave

- DMS-REQ-0004 Nightly Data Accessible Within 24 hrs
- DMS-REQ-0010 Difference Exposures
- DMS-REQ-0069 Processed Visit Images
- DMS-REQ-0029 Generate Photometric Zeropoint for Visit Image
- DMS-REQ-0030 Generate WCS for Visit Images
- DMS-REQ-0327 Background Model Calculation
- DMS-REQ-0266 Exposure Catalog
- DMS-REQ-0269 DIASource Catalog
- DMS-REQ-0270 Faint DIASource Measurements
- DMS-REQ-0271 DIAObject Catalog
- DMS-REQ-0272 DIAObject Attributes
- DMS-REQ-0273 SSOBJECT Catalog
- DMS-REQ-0274 Alert Content
- DMS-REQ-0317 DIAForcedSource Catalog
- DMS-REQ-0324 Matching DIASources to Objects
- DMS-REQ-0106 Coadded Image Provenance
- DMS-REQ-0267 Source Catalog
- DMS-REQ-0268 Forced-Source Catalog
- DMS-REQ-0275 Object Catalog
- DMS-REQ-0334 Persisting Data Products
- DMS-REQ-0338 Targeted Coadds
- DMS-REQ-0322 Special Programs Database
- DMS-REQ-0344 Constraints on Level 1 Special Program Products Generation
- DMS-REQ-0291 Query Repeatability
- DMS-REQ-0089 Solar System Objects Available Within Specified Time

- DMS-REQ-0131 Calibration Images Available Within Specified Time
- DMS-REQ-0284 Level-1 Production Completeness
- DMS-REQ-0287 DIASource Precovery
- DMS-REQ-0077 Maintain Archive Publicly Accessible
- DMS-REQ-0078 Catalog Export Formats
- DMS-REQ-0094 Keep Historical Alert Archive
- DMS-REQ-0102 Provide Engineering and Facility Database Archive
- DMS-REQ-0309 Raw Data Archiving Reliability
- DMS-REQ-0310 Un-Archived Data Product Cache
- DMS-REQ-0312 Level 1 Data Product Access
- DMS-REQ-0363 Access to Previous Data Releases
- DMS-REQ-0364 Data Access Services
- DMS-REQ-0365 Operations Subsets
- DMS-REQ-0366 Subsets Support
- DMS-REQ-0367 Access Services Performance
- DMS-REQ-0368 Implementation Provisions
- DMS-REQ-0369 Evolution
- DMS-REQ-0370 Older Release Behavior
- DMS-REQ-0161 Optimization of Cost, Reliability and Availability in Order
- DMS-REQ-0162 Pipeline Throughput
- DMS-REQ-0163 Re-processing Capacity
- DMS-REQ-0166 Incorporate Fault-Tolerance
- DMS-REQ-0167 Incorporate Autonomics
- DMS-REQ-0314 Compute Platform Heterogeneity
- DMS-REQ-0318 Data Management Unscheduled Downtime
- DMS-REQ-0185 Archive Center
- DMS-REQ-0186 Archive Center Disaster Recovery
- CA-DM-CON-ICD-0019 Camera engineering image data archiving
- OCS-DM-COM-ICD-0027 Multiple Physically Separated Copies
- OCS-DM-COM-ICD-0028 Expected Data Volume
- OCS-DM-COM-ICD-0029 Archive Latency
- OCS-DM-COM-ICD-0030 Replication Interface
- DM-TS-CON-ICD-0003 Wavefront image archive access

Commissioning Cluster Enclave

- DMS-REQ-0161 Optimization of Cost, Reliability and Availability in Order
- DMS-REQ-0166 Incorporate Fault-Tolerance
- DMS-REQ-0167 Incorporate Autonomics
- DMS-REQ-0314 Compute Platform Heterogeneity
- DMS-REQ-0318 Data Management Unscheduled Downtime
- DMS-REQ-0176 Base Facility Infrastructure
- DMS-REQ-0316 Commissioning Cluster

DAC Chile Enclave

- DMS-REQ-0004 Nightly Data Accessible Within 24 hrs
- DMS-REQ-0323 Calculating SSOBJECT Parameters
- DMS-REQ-0324 Matching DIASources to Objects
- DMS-REQ-0334 Persisting Data Products
- DMS-REQ-0338 Targeted Coadds
- DMS-REQ-0339 Tracking Characterization Changes Between Data Releases
- DMS-REQ-0322 Special Programs Database
- DMS-REQ-0344 Constraints on Level 1 Special Program Products Generation
- DMS-REQ-0291 Query Repeatability
- DMS-REQ-0089 Solar System Objects Available Within Specified Time
- DMS-REQ-0131 Calibration Images Available Within Specified Time
- DMS-REQ-0284 Level-1 Production Completeness
- DMS-REQ-0287 DIASource Precovery
- DMS-REQ-0119 DAC resource allocation for Level 3 processing
- DMS-REQ-0120 Level 3 Data Product Self Consistency
- DMS-REQ-0121 Provenance for Level 3 processing at DACs
- DMS-REQ-0340 Access Controls of Level 3 Data Products
- DMS-REQ-0075 Catalog Queries
- DMS-REQ-0077 Maintain Archive Publicly Accessible
- DMS-REQ-0078 Catalog Export Formats
- DMS-REQ-0094 Keep Historical Alert Archive
- DMS-REQ-0102 Provide Engineering and Facility Database Archive
- DMS-REQ-0309 Raw Data Archiving Reliability
- DMS-REQ-0310 Un-Archived Data Product Cache
- DMS-REQ-0311 Regenerate Un-archived Data Products
- DMS-REQ-0312 Level 1 Data Product Access
- DMS-REQ-0313 Level 1 and 2 Catalog Access
- DMS-REQ-0336b Regenerating Data Products from Previous Data Releases
- DMS-REQ-0341 Providing a Precovery Service
- DMS-REQ-0345 Logging of catalog queries
- DMS-REQ-0363 Access to Previous Data Releases
- DMS-REQ-0364 Data Access Services
- DMS-REQ-0365 Operations Subsets
- DMS-REQ-0366 Subsets Support
- DMS-REQ-0367 Access Services Performance
- DMS-REQ-0368 Implementation Provisions
- DMS-REQ-0369 Evolution
- DMS-REQ-0370 Older Release Behavior
- DMS-REQ-0161 Optimization of Cost, Reliability and Availability in Order
- DMS-REQ-0162 Pipeline Throughput
- DMS-REQ-0166 Incorporate Fault-Tolerance
- DMS-REQ-0167 Incorporate Autonomics

- DMS-REQ-0314 Compute Platform Heterogeneity
- DMS-REQ-0318 Data Management Unscheduled Downtime
- DMS-REQ-0176 Base Facility Infrastructure
- DMS-REQ-0123 Access to input catalogs for DAC-based Level 3 processing
- DMS-REQ-0127 Access to input images for DAC-based Level 3 processing
- DMS-REQ-0193 Data Access Centers
- DMS-REQ-0194 Data Access Center Simultaneous Connections
- DMS-REQ-0196 Data Access Center Geographical Distribution
- OCS-DM-COM-ICD-0029 Archive Latency

DAC US Enclave

- DMS-REQ-0004 Nightly Data Accessible Within 24 hrs
- DMS-REQ-0323 Calculating SSOBJECT Parameters
- DMS-REQ-0324 Matching DIASources to Objects
- DMS-REQ-0334 Persisting Data Products
- DMS-REQ-0338 Targeted Coadds
- DMS-REQ-0339 Tracking Characterization Changes Between Data Releases
- DMS-REQ-0322 Special Programs Database
- DMS-REQ-0344 Constraints on Level 1 Special Program Products Generation
- DMS-REQ-0291 Query Repeatability
- DMS-REQ-0089 Solar System Objects Available Within Specified Time
- DMS-REQ-0131 Calibration Images Available Within Specified Time
- DMS-REQ-0284 Level-1 Production Completeness
- DMS-REQ-0287 DIASource Precovery
- DMS-REQ-0119 DAC resource allocation for Level 3 processing
- DMS-REQ-0120 Level 3 Data Product Self Consistency
- DMS-REQ-0121 Provenance for Level 3 processing at DACs
- DMS-REQ-0340 Access Controls of Level 3 Data Products
- DMS-REQ-0075 Catalog Queries
- DMS-REQ-0077 Maintain Archive Publicly Accessible
- DMS-REQ-0078 Catalog Export Formats
- DMS-REQ-0094 Keep Historical Alert Archive
- DMS-REQ-0102 Provide Engineering and Facility Database Archive
- DMS-REQ-0309 Raw Data Archiving Reliability
- DMS-REQ-0310 Un-Archived Data Product Cache
- DMS-REQ-0311 Regenerate Un-archived Data Products
- DMS-REQ-0312 Level 1 Data Product Access
- DMS-REQ-0313 Level 1 and 2 Catalog Access
- DMS-REQ-0336b Regenerating Data Products from Previous Data Releases
- DMS-REQ-0341 Providing a Precovery Service
- DMS-REQ-0345 Logging of catalog queries
- DMS-REQ-0363 Access to Previous Data Releases
- DMS-REQ-0364 Data Access Services

- DMS-REQ-0365 Operations Subsets
- DMS-REQ-0366 Subsets Support
- DMS-REQ-0367 Access Services Performance
- DMS-REQ-0368 Implementation Provisions
- DMS-REQ-0369 Evolution
- DMS-REQ-0370 Older Release Behavior
- DMS-REQ-0161 Optimization of Cost, Reliability and Availability in Order
- DMS-REQ-0162 Pipeline Throughput
- DMS-REQ-0166 Incorporate Fault-Tolerance
- DMS-REQ-0167 Incorporate Autonomics
- DMS-REQ-0314 Compute Platform Heterogeneity
- DMS-REQ-0318 Data Management Unscheduled Downtime
- DMS-REQ-0185 Archive Center
- DMS-REQ-0186 Archive Center Disaster Recovery
- DMS-REQ-0123 Access to input catalogs for DAC-based Level 3 processing
- DMS-REQ-0127 Access to input images for DAC-based Level 3 processing
- DMS-REQ-0193 Data Access Centers
- DMS-REQ-0194 Data Access Center Simultaneous Connections
- DMS-REQ-0196 Data Access Center Geographical Distribution
- OCS-DM-COM-ICD-0029 Archive Latency
- EP-DM-CON-ICD-0001 US DAC Provides EPO Interface
- EP-DM-CON-ICD-0002 EPO Authorized User of DM Science Database
- EP-DM-CON-ICD-0034 Citizen Science Data

Offline Production Enclave

- DMS-REQ-0004 Nightly Data Accessible Within 24 hrs
- DMS-REQ-0325 Regenerating L1 Data Products During Data Release Processing
- DMS-REQ-0034 Associate Sources to Objects
- DMS-REQ-0047 Provide PSF for Coadded Images
- DMS-REQ-0103 Produce Images for EPO
- DMS-REQ-0106 Coadded Image Provenance
- DMS-REQ-0267 Source Catalog
- DMS-REQ-0268 Forced-Source Catalog
- DMS-REQ-0275 Object Catalog
- DMS-REQ-0046 Provide Photometric Redshifts of Galaxies
- DMS-REQ-0277 Coadd Source Catalog
- DMS-REQ-0278 Coadd Image Method Constraints
- DMS-REQ-0279 Deep Detection Coadds
- DMS-REQ-0280 Template Coadds
- DMS-REQ-0281 Multi-band Coadds
- DMS-REQ-0329 All-Sky Visualization of Data Releases
- DMS-REQ-0330 Best Seeing Coadds
- DMS-REQ-0334 Persisting Data Products

- DMS-REQ-0335 PSF-Matched Coadds
- DMS-REQ-0059 Bad Pixel Map
- DMS-REQ-0060 Bias Residual Image
- DMS-REQ-0061 Crosstalk Correction Matrix
- DMS-REQ-0062 Illumination Correction Frame
- DMS-REQ-0063 Monochromatic Flatfield Data Cube
- DMS-REQ-0130 Calibration Data Products
- DMS-REQ-0132 Calibration Image Provenance
- DMS-REQ-0282 Dark Current Correction Frame
- DMS-REQ-0283 Fringe Correction Frame
- DMS-REQ-0320 Processing of Data From Special Programs
- DMS-REQ-0131 Calibration Images Available Within Specified Time
- DMS-REQ-0284 Level-1 Production Completeness
- DMS-REQ-0286 SSOBJect Precovery
- DMS-REQ-0287 DIASource Precovery
- DMS-REQ-0289 Calibration Production Processing
- DMS-REQ-0341 Providing a Precovery Service
- DMS-REQ-0008 Pipeline Availability
- DMS-REQ-0161 Optimization of Cost, Reliability and Availability in Order
- DMS-REQ-0162 Pipeline Throughput
- DMS-REQ-0163 Re-processing Capacity
- DMS-REQ-0166 Incorporate Fault-Tolerance
- DMS-REQ-0167 Incorporate Autonomics
- DMS-REQ-0314 Compute Platform Heterogeneity
- DMS-REQ-0318 Data Management Unscheduled Downtime
- DMS-REQ-0185 Archive Center
- DMS-REQ-0186 Archive Center Disaster Recovery
- DM-TS-CON-ICD-0003 Wavefront image archive access

Prompt Base Enclave

- DMS-REQ-0018 Raw Science Image Data Acquisition
- DMS-REQ-0020 Wavefront Sensor Data Acquisition
- DMS-REQ-0022 Crosstalk Corrected Science Image Data Acquisition
- DMS-REQ-0024 Raw Image Assembly
- DMS-REQ-0068 Raw Science Image Metadata
- DMS-REQ-0265 Guider Calibration Data Acquisition
- DMS-REQ-0004 Nightly Data Accessible Within 24 hrs
- DMS-REQ-0097 Level 1 Data Quality Report Definition
- DMS-REQ-0099 Level 1 Performance Report Definition
- DMS-REQ-0101 Level 1 Calibration Report Definition
- DMS-REQ-0353 Publishing predicted visit schedule
- DMS-REQ-0096 Generate Data Quality Report Within Specified Time
- DMS-REQ-0098 Generate DMS Performance Report Within Specified Time

- DMS-REQ-0100 Generate Calibration Report Within Specified Time
- DMS-REQ-0284 Level-1 Production Completeness
- DMS-REQ-0102 Provide Engineering and Facility Database Archive
- DMS-REQ-0309 Raw Data Archiving Reliability
- DMS-REQ-0008 Pipeline Availability
- DMS-REQ-0161 Optimization of Cost, Reliability and Availability in Order
- DMS-REQ-0162 Pipeline Throughput
- DMS-REQ-0164 Temporary Storage for Communications Links
- DMS-REQ-0165 Infrastructure Sizing for "catching up"
- DMS-REQ-0166 Incorporate Fault-Tolerance
- DMS-REQ-0167 Incorporate Autonomics
- DMS-REQ-0314 Compute Platform Heterogeneity
- DMS-REQ-0318 Data Management Unscheduled Downtime
- DMS-REQ-0315 DMS Communication with OCS
- DMS-REQ-0176 Base Facility Infrastructure
- CA-DM-CON-ICD-0007 Provide Data Management Conditions data
- CA-DM-CON-ICD-0008 Data Management Conditions data latency
- CA-DM-CON-ICD-0014 Provide science sensor data
- CA-DM-CON-ICD-0015 Provide wavefront sensor data
- CA-DM-CON-ICD-0016 Provide guide sensor data
- CA-DM-CON-ICD-0017 Data Management load on image data interfaces
- CA-DM-CON-ICD-0019 Camera engineering image data archiving
- OCS-DM-COM-ICD-0009 Command Set Implementation by Data Management
- OCS-DM-COM-ICD-0010 Response to Immediate Commands
- OCS-DM-COM-ICD-0003 Data Management Device Command Response Model
- OCS-DM-COM-ICD-0004 Data Management Exposed Devices
- OCS-DM-COM-ICD-0005 Main Camera Archiver Device
- OCS-DM-COM-ICD-0006 Catch-up Archiver Device
- OCS-DM-COM-ICD-0007 Prompt Processing Device
- OCS-DM-COM-ICD-0008 EFD Replicator Device
- OCS-DM-COM-ICD-0017 Data Management Telemetry Interface Model
- OCS-DM-COM-ICD-0018 Data Management Telemetry Time Stamp
- OCS-DM-COM-ICD-0019 Data Management Events and Telemetry Required by the OCS
- OCS-DM-COM-ICD-0020 Image and Visit Processing and Archiving Status
- OCS-DM-COM-ICD-0021 Data Quality Metrics
- OCS-DM-COM-ICD-0022 System Health Metrics
- OCS-DM-COM-ICD-0025 Expected Load of Queries from DM
- OCS-DM-COM-ICD-0026 Engineering and Facilities Database Archiving by Data Management
- OCS-DM-COM-ICD-0027 Multiple Physically Separated Copies
- OCS-DM-COM-ICD-0028 Expected Data Volume
- OCS-DM-COM-ICD-0030 Replication Interface
- DM-TS-CON-ICD-0002 Timing
- DM-TS-CON-ICD-0011 Data Format
- DM-TS-CON-ICD-0006 Data

- DM-TS-CON-ICD-0007 Timing
- DM-TS-CON-ICD-0009 Calibration Data Products
- DM-TS-CON-ICD-0004 Use OCS for data transport
- DM-TS-CON-ICD-0003 Wavefront image archive access

Prompt NCSA Enclave

- DMS-REQ-0004 Nightly Data Accessible Within 24 hrs
- DMS-REQ-0010 Difference Exposures
- DMS-REQ-0074 Difference Exposure Attributes
- DMS-REQ-0069 Processed Visit Images
- DMS-REQ-0029 Generate Photometric Zeropoint for Visit Image
- DMS-REQ-0030 Generate WCS for Visit Images
- DMS-REQ-0070 Generate PSF for Visit Images
- DMS-REQ-0072 Processed Visit Image Content
- DMS-REQ-0327 Background Model Calculation
- DMS-REQ-0328 Documenting Image Characterization
- DMS-REQ-0097 Level 1 Data Quality Report Definition
- DMS-REQ-0099 Level 1 Performance Report Definition
- DMS-REQ-0101 Level 1 Calibration Report Definition
- DMS-REQ-0266 Exposure Catalog
- DMS-REQ-0269 DIASource Catalog
- DMS-REQ-0270 Faint DIASource Measurements
- DMS-REQ-0271 DIAObject Catalog
- DMS-REQ-0272 DIAObject Attributes
- DMS-REQ-0273 SSOBJECT Catalog
- DMS-REQ-0274 Alert Content
- DMS-REQ-0317 DIAForcedSource Catalog
- DMS-REQ-0319 Characterizing Variability
- DMS-REQ-0320 Processing of Data From Special Programs
- DMS-REQ-0321 Level 1 Processing of Special Programs Data
- DMS-REQ-0344 Constraints on Level 1 Special Program Products Generation
- DMS-REQ-0002 Transient Alert Distribution
- DMS-REQ-0096 Generate Data Quality Report Within Specified Time
- DMS-REQ-0098 Generate DMS Performance Report Within Specified Time
- DMS-REQ-0100 Generate Calibration Report Within Specified Time
- DMS-REQ-0131 Calibration Images Available Within Specified Time
- DMS-REQ-0284 Level-1 Production Completeness
- DMS-REQ-0343 Performance Requirements for LSST Alert Filtering Service
- DMS-REQ-0102 Provide Engineering and Facility Database Archive
- DMS-REQ-0309 Raw Data Archiving Reliability
- DMS-REQ-0008 Pipeline Availability
- DMS-REQ-0161 Optimization of Cost, Reliability and Availability in Order
- DMS-REQ-0162 Pipeline Throughput

- DMS-REQ-0165 Infrastructure Sizing for "catching up"
- DMS-REQ-0166 Incorporate Fault-Tolerance
- DMS-REQ-0167 Incorporate Autonomics
- DMS-REQ-0314 Compute Platform Heterogeneity
- DMS-REQ-0318 Data Management Unscheduled Downtime
- DMS-REQ-0185 Archive Center
- CA-DM-CON-ICD-0019 Camera engineering image data archiving
- EP-DM-CON-ICD-0023 Nightly DM Transfer of Processed Visit Images (PVI)-Based Images to EPO

16 References

- [1] **[LDM-139]**, Becla, J., Lim, K.T., 2013, *Data Management Storage Sizing and I/O Model Explanation*, LDM-139, URL <https://ls.st/LDM-139>
- [2] **[LDM-141]**, Becla, J., Lim, K.T., 2013, *Data Management Storage Sizing and I/O Model*, LDM-141, URL <https://ls.st/LDM-141>
- [3] **[LDM-135]**, Becla, J., Wang, D., Monkewitz, S., et al., 2013, *Database Design*, LDM-135, URL <https://ls.st/LDM-135>
- [4] **[LSE-29]**, Claver, C.F., The LSST Systems Engineering Integrated Project Team, 2017, *LSST System Requirements (LSR)*, LSE-29, URL <https://ls.st/LSE-29>
- [5] **[LSE-30]**, Claver, C.F., The LSST Systems Engineering Integrated Project Team, 2018, *Observatory System Specifications (OSS)*, LSE-30, URL <https://ls.st/LSE-30>
- [6] **[LSE-81]**, Dubois-Felsmann, G., 2013, *LSST Science and Project Sizing Inputs*, LSE-81, URL <https://ls.st/LSE-81>
- [7] **[LSE-61]**, Dubois-Felsmann, G., Jenness, T., 2017, *LSST Data Management Subsystem Requirements*, LSE-61, URL <https://ls.st/LSE-61>
- [8] **[LSE-82]**, Dubois-Felsmann, G., Lim, K.T., 2013, *Science and Project Sizing Inputs Explanation*, LSE-82, URL <https://ls.st/LSE-82>
- [9] **[LSE-72]**, Dubois-Felsmann, G., Schumacher, G., Selvy, B., 2014, *OCS Command Dictionary for Data Management*, LSE-72, URL <https://ls.st/LSE-72>
- [10] **[LDM-542]**, Dubois-Felsmann, G., Lim, K.T., Wu, X., et al., 2017, *LSST Science Platform Design*, LDM-542, URL <https://ls.st/LDM-542>
- [11] **[LDM-129]**, Freemon, M., Kantor, J., 2013, *Data Management Infrastructure Design*, LDM-129, URL <https://ls.st/LDM-129>

- [12] **[LDM-143]**, Freemon, M., Pietrowicz, S., 2013, *Site Specific Infrastructure Estimation Explanation*, LDM-143, URL <https://ls.st/LDM-143>
- [13] **[LDM-144]**, Freemon, M., Pietrowicz, S., Alt, J., 2016, *Site Specific Infrastructure Estimation Model*, LDM-144, URL <https://ls.st/LDM-144>
- [14] **[LPM-17]**, Ivezić, Ž., The LSST Science Collaboration, 2011, *LSST Science Requirements Document*, LPM-17, URL <https://ls.st/LPM-17>
- [15] **[LSE-163]**, Jurić, M., et al., 2017, *LSST Data Products Definition Document*, LSE-163, URL <https://ls.st/LSE-163>
- [16] **[LDM-142]**, Kantor, J., 2017, *Network Sizing Model*, LDM-142, URL <https://ls.st/LDM-142>
- [17] **[LDM-138]**, Kantor, J., Axelrod, T., Lim, K.T., 2013, *Data Management Compute Sizing Model*, LDM-138, URL <https://ls.st/LDM-138>
- [18] **[LSE-78]**, Lambert, R., Kantor, J., Huffer, M., et al., 2017, *LSST Observatory Network Design*, LSE-78, URL <https://ls.st/LSE-78>
- [19] **[LDM-140]**, Lim, K.T., Smith, C., Axelrod, T., Dubois-Felsmann, G., Freemon, M., 2013, *Data Management Compute Sizing Explanation*, LDM-140, URL <https://ls.st/LDM-140>
- [20] **[LDM-148]**, Lim, K.T., Bosch, J., Dubois-Felsmann, G., et al., 2017, *Data Management System Design*, LDM-148, URL <https://ls.st/LDM-148>
- [21] **[LDM-152]**, Lim, K.T., Dubois-Felsmann, G., Johnson, M., Jurić, M., Petravick, D., 2017, *Data Management Middleware Design*, LDM-152, URL <https://ls.st/LDM-152>
- [22] LSST Data Management, LSST DM Developer Guide, URL <https://developer.lsst.io/>
- [23] **[LDM-230]**, Petravick, D., Gelman, M., 2017, *Concept of Operations for the LSST Data Facility Services*, LDM-230, URL <https://ls.st/LDM-230>
- [24] **[LPM-121]**, Petravick, D.L., Withers, A., 2016, *LSST Master Information Security Policy*, LPM-121, URL <https://ls.st/LPM-121>
- [25] **[Document-5373]**, Pinto, P., Kantor, J., Strauss, M., Sweeney, D., 2008, *Data Access White Paper*, Document-5373, URL <https://ls.st/Document-5373>
- [26] **[LDM-151]**, Swinbank, J.D., et al., 2017, *Data Management Science Pipelines Design*, LDM-151, URL <https://ls.st/LDM-151>